

Keely Schild  
NEXT Steelcase  
Competition  
ID 351 - Studio III  
December 4th, 2019

## Next University

To design a new higher education space for NEXT University, has a vision to increase their reach into a large urban population and to provide an alternative place for students of all ages to gather, connect, explore and engage in lifelong learning experiences.

## Design Considerations

- + Location + culture
- + Promote collaboration
- + Design for all generations
- + Incorporate technology
- + Palette of place

# SPACE REQUIREMENTS

Usable SQ.FT. = 10,685



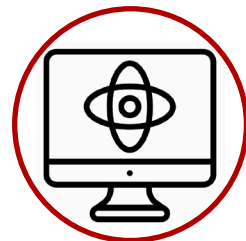
Active Learning Classroom



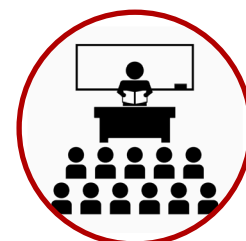
Small Seminar Classrooms



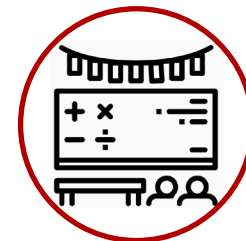
Makerspace: Fabrication



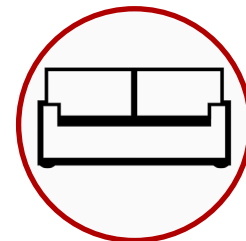
Computer Lab



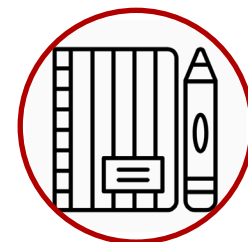
Large Active Multi-Purpose Classroom



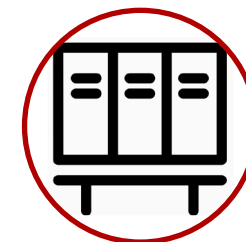
Immersive Learning Area



In-Between Learning Spaces



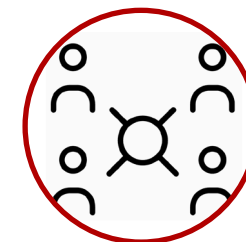
Learning Commons



Locker/Copy Resource Center



Tutoring Center



Faculty Connection Hub



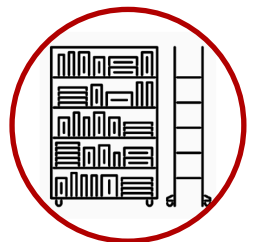
Faculty Private Offices



Hourly Childcare



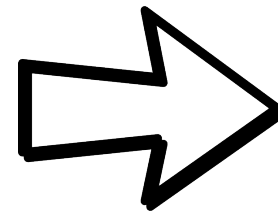
Mother's Room



Wildcard Space (Library)

# NEXT UNIVERSITY

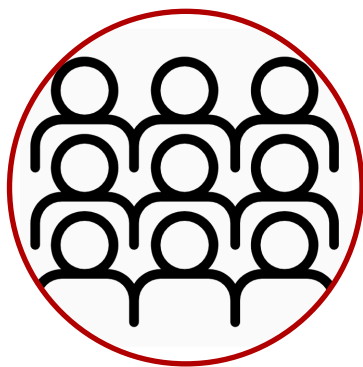
NEXT University is a cutting-edge  
higher education learning  
institution.



To build a small-scale extension  
called the  
NEXT HUB in the heart of DC  
neighborhood.

Give students access to a premier  
education at many stages of one's life;  
providing active and diverse  
educational experiences.

## WANTS + NEEDS



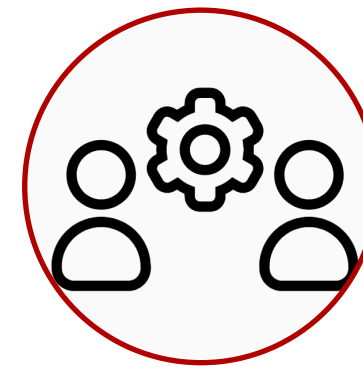
Gather and engage



Enable adult learners to  
further their education  
with small children



Community lifelong  
learning center



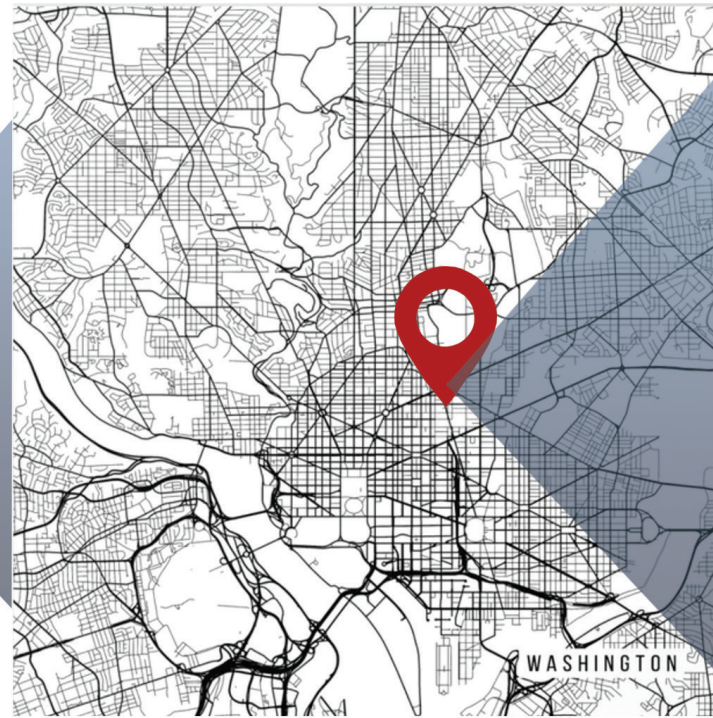
Increasing student  
engagement



Evolution of the  
community



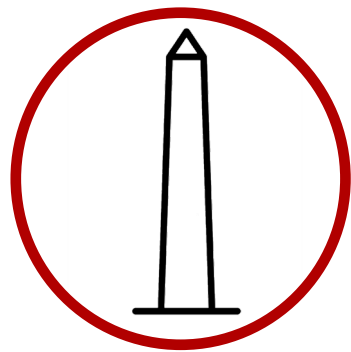
Washington, D.C.



1000 F Street  
Washington, D.C. 20004



10th and 11th floors



1.6 miles from  
Washington  
Monument



Loacted in  
Penn Quarter



Parking across the  
street



-H & M  
-Sephora  
-CityCenterDC

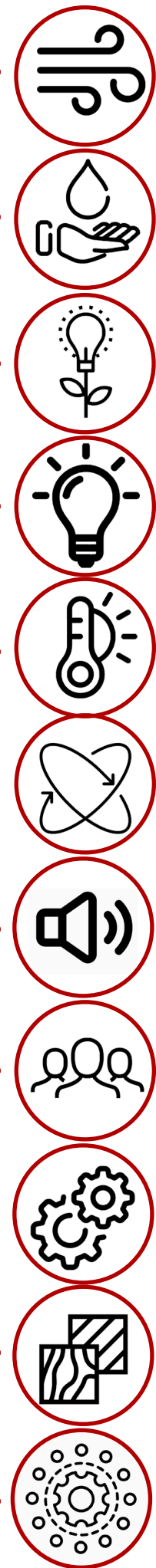
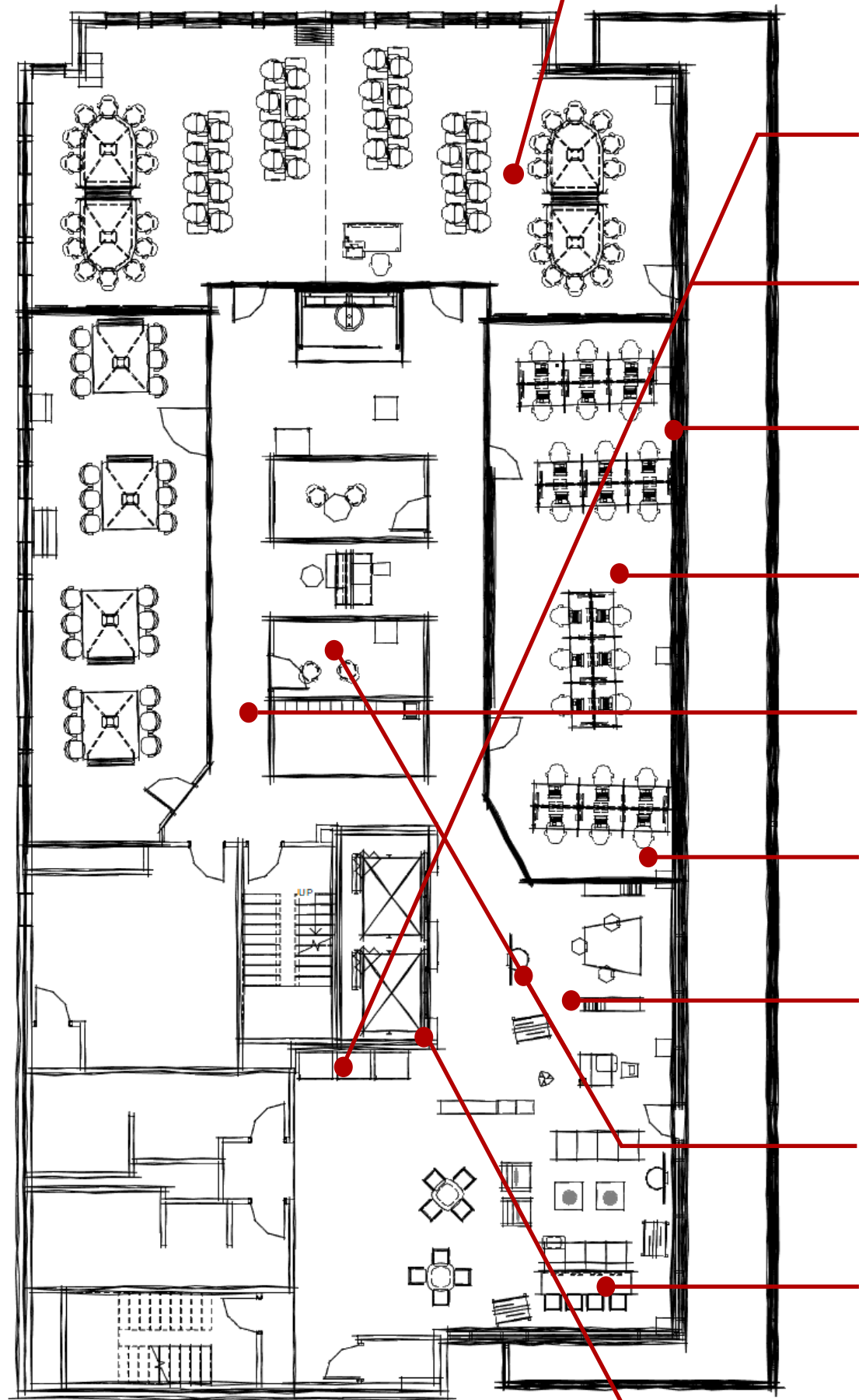


Population  
2018:  
702,455



# WELL THEORY

Level 10



## AIR

- | Air filtration system
- | Material selection
- | Ventilation in space

## WATER

- | Accessible drinking water
- | Water filtration system

## NOURISHMENT

- | Healthy vending machines
- | Nutrition education
- | Food advertising

## LIGHT

- | Natural light
- | Lighting control
- | Glare control

## THERMAL COMFORT

- | Thermal comfort monitoring
- | Humidity control
- | Thermal zoning

## MOVEMENT

- | Network and circulation
- | Active furnishings
- | Enhanced ergonomics

## SOUND

- | Sounds Masking
- | Sound Absorption
- | Sound Barriers

## COMMUNITY

- | Open seating areas
- | New mother support
- | Family support

## MIND

- | Focus support
- | Aesthetics
- | Technology

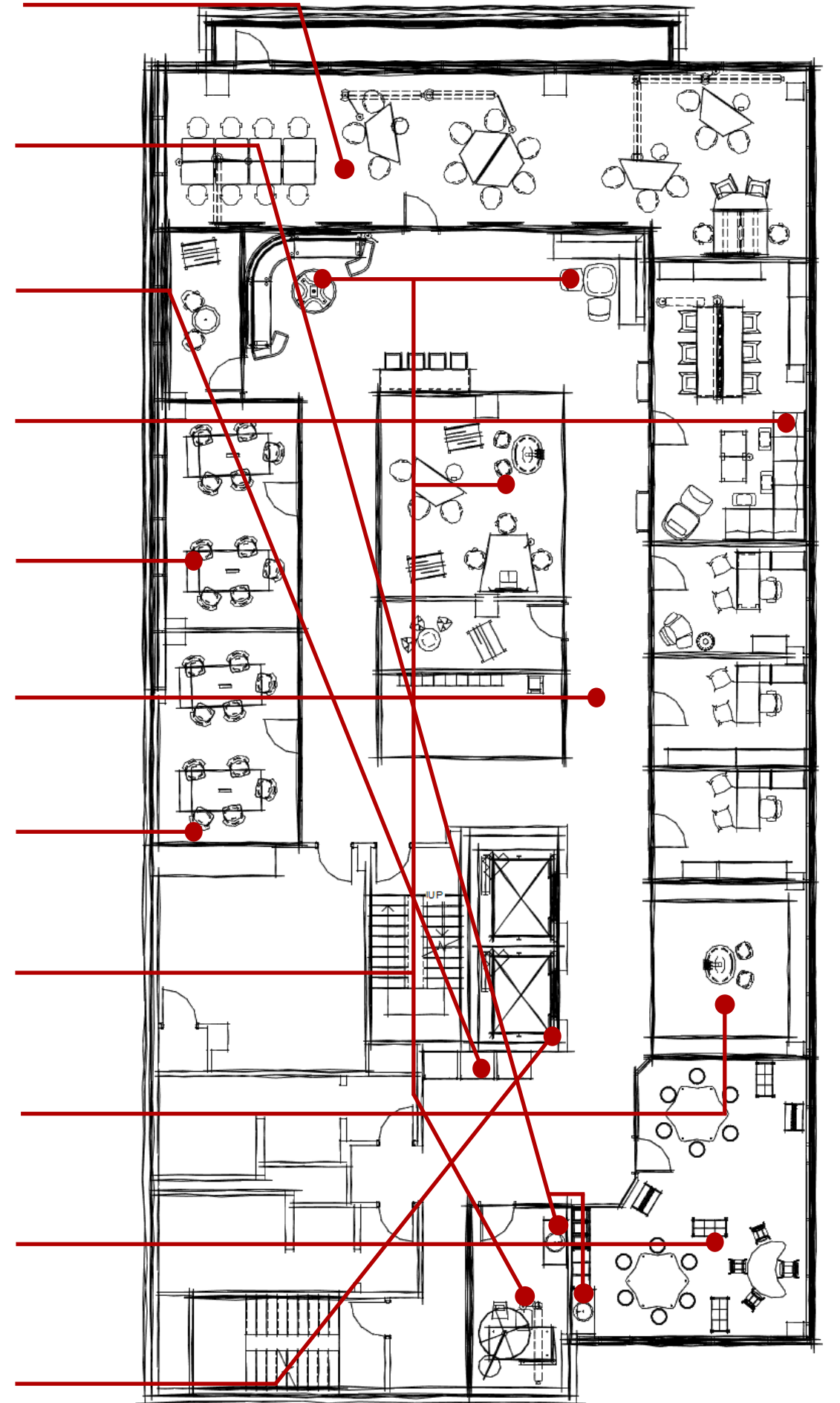
## MATERIALS

- | Soft materials
- | Cleaning product protocol
- | Waste Management

## INNOVATION

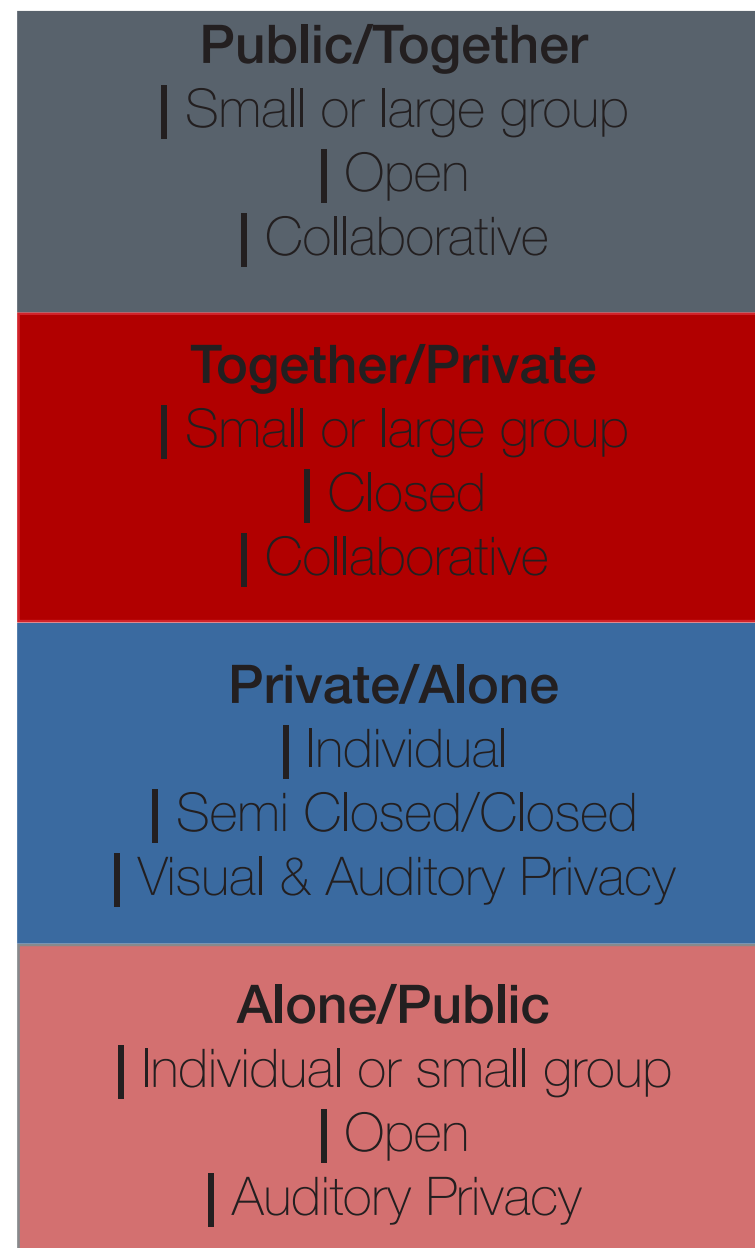
- | Leadership to enact change
- | Tours of the space
- | Human health

Level 11

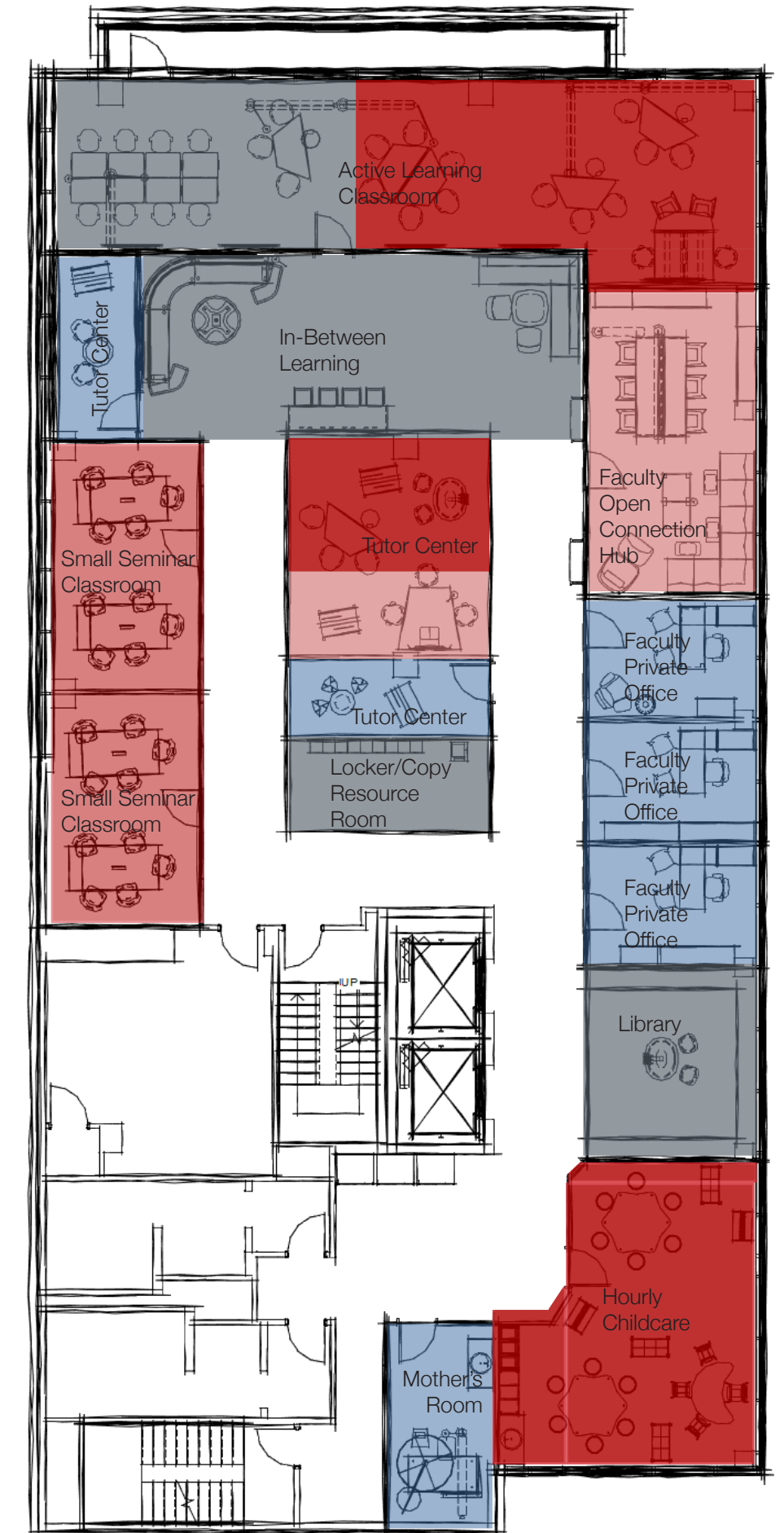


# PALETTE OF PLACE

“An ecosystem of interrelated zones and settings that provide users with a range of spaces that support their various modes of work.”



Level 10



Level 11



## To create a academic community

- Paths that cross with patterns to provide convenience and interaction.
- Departments with separate dedicated space for unscheduled activities and informal uses.
- Signs, directions, room numbers and maps are important, as is the external environment



## To promote health and wellness

- To offset the hard surfaces in the space, soft materials applied to help absorb some of the sound in the space.
- Walls painted a cool color to make the space feel larger.
- Providing food and drink choices, a variety of settings throughout the NEXT HUB.



## Consider human factors in the space

- Utilize adjustable seating
- Creating an environment that helps shape a culture, supports positive emotions, between members, their colleagues & peers.
- Encourage people to want to come, learn together and keep coming back.



# Admirable

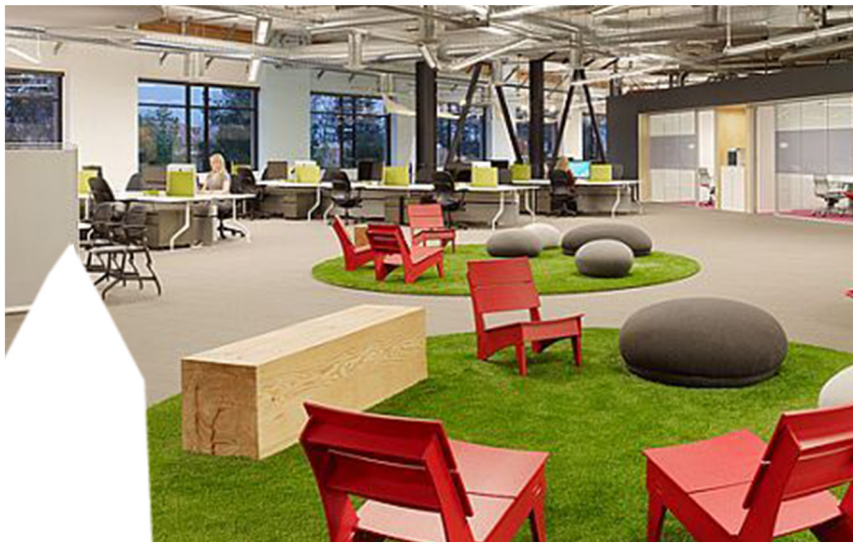
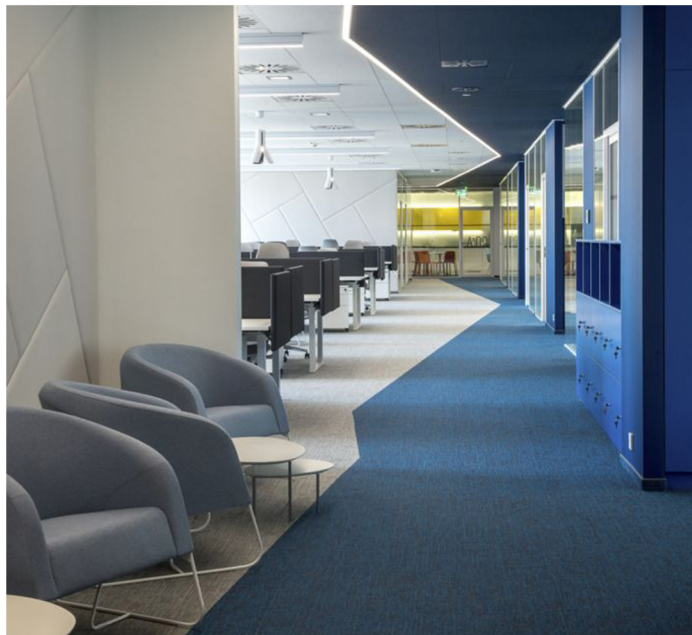
## NEXT

**hub** will be designed to reflect Washington DC by taking **inspiration** from its many monuments but especially the **Washington Monument**. From concept to construction to completion, the Washington Monument has been a **focal point** of the nation's capital for more than 150 years. I will utilize principles of **emphasis** and **hierarchy** through the use of **lines, paths, contrasting colors and textures**. The Washington Monument embodies the awe, respect and gratitude the nation felt for its most essential founding father. This space will reflect that by standing in no one's shadow with the **simplicity** of the space. Using colors such as **darker reds** and **muted blues** will also reinforce the idea and relate back to DC. **Textures** will be used throughout the space to **add interest** and **comfort** in places that are meant to be more relaxed. The space will also reflect the **culture** and people of DC by incorporating **local art and murals** in the space to reflect DC. I will use **pops of color** to connect to DC, a **linear layout** and use **textures** from material selections for visual characteristics.

# Experience

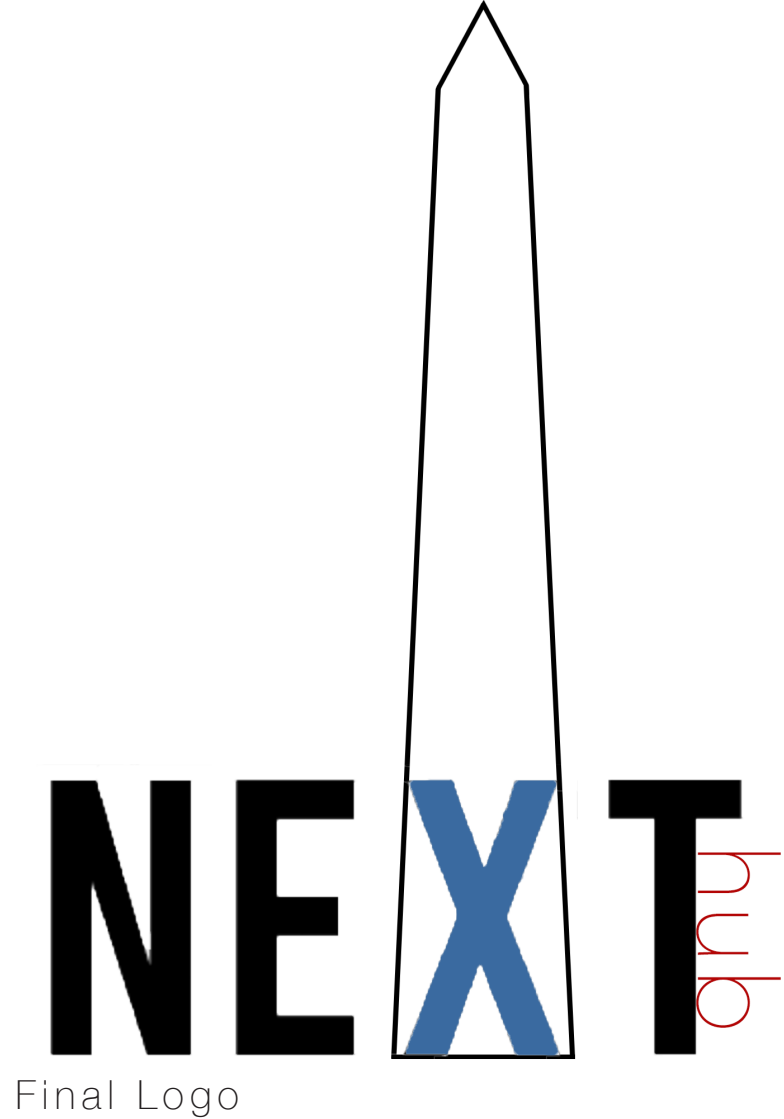
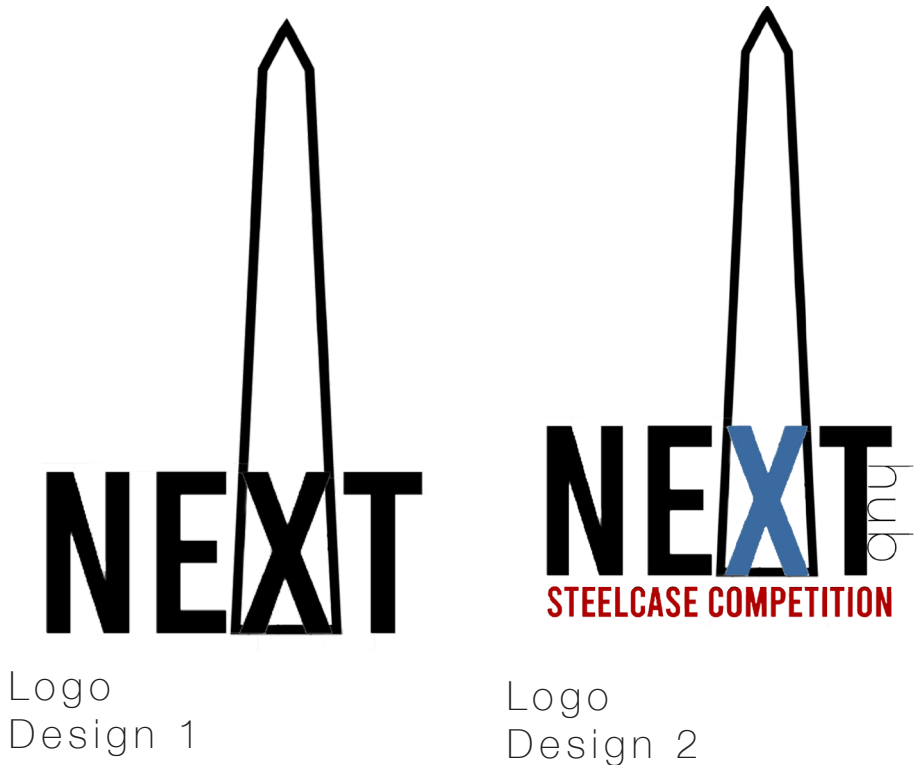


# INSPIRATION BOARD

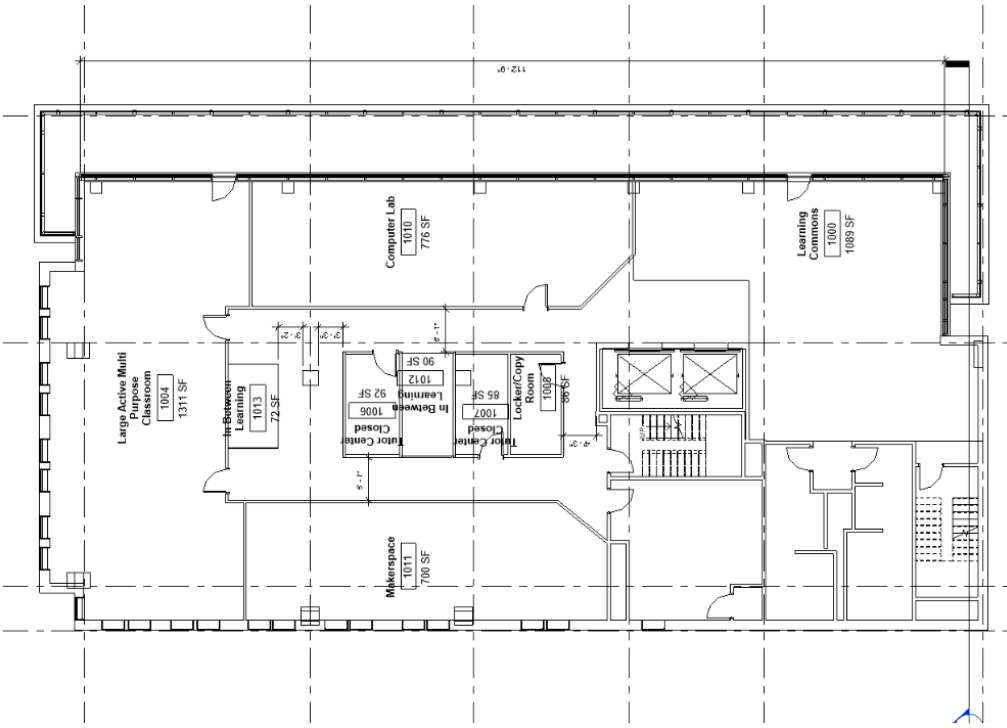
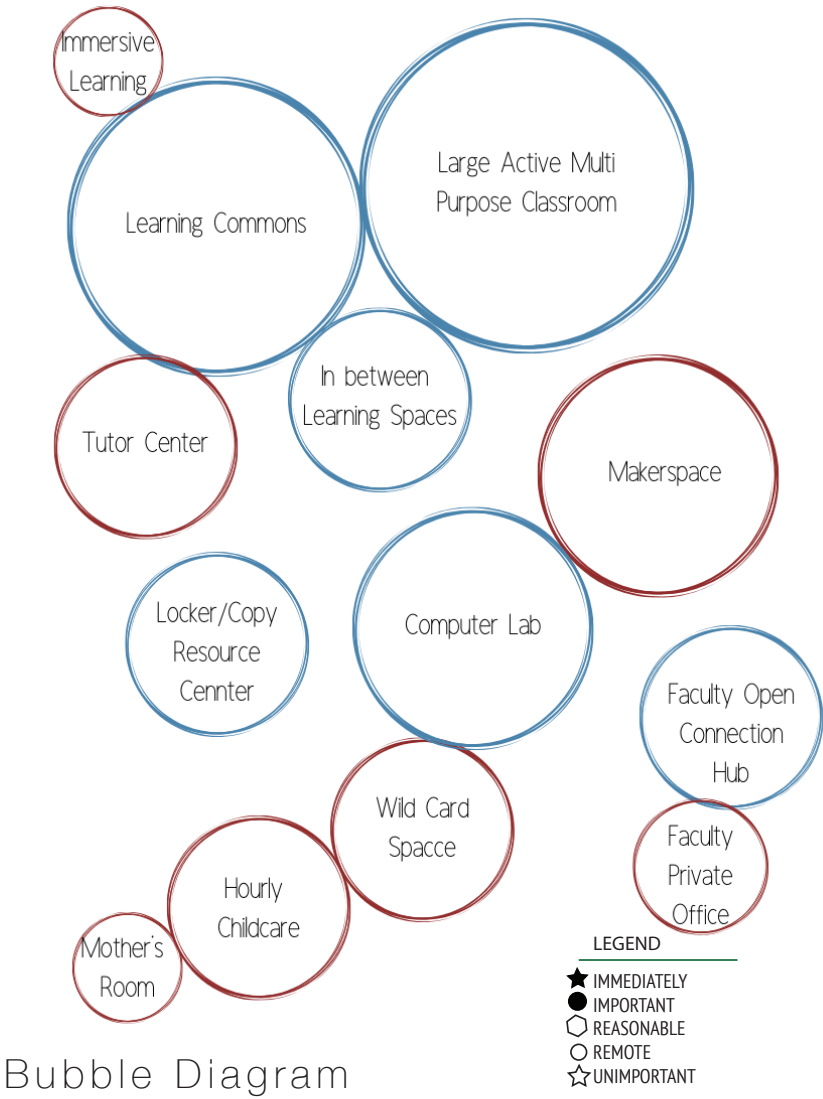




Logo Development



Adjacency Development



ADJACENCY MATRIX

Rooms	Square Footage Needed	Adjacencies	Public Access	Daylight &/or View	Privacy	Plumbing	Specialty Equip	Special Considerations
1. Active Learning Classroom	Min. 700	7	M	Y	M	NO	Y	
2. Small Seminar Classrooms	360-400	none	M	Y	M	NO	Y	
3. Markerspace Fabrication Lab	Min. 700	7	M	N	M	NO	Y	
4. Computer Lab	Min. 700	7	M	N	M	NO	Y	
5. Large Active Multi-Purpose Classroom	Min. 1300	7	M	Y	M	NO	Y	
6. Immersive Learning - VR/AR/MR/AI	64	8	M	Y	M	NO	Y	
7. In between Learning spaces	320	1,2,5	H	Y	L	NO	N	
8. Learning Commons	900-1100	near entry & outdoor space	H	Y	L	NO	N	
9. Locker/ Copy Resource Center	128	entry	H	N	H	NO	N	
10. Tutoring Center	592-692	none	M	Y	M	NO	Y	
11. Faculty Open Connection Hub	400	12	M	Y	L	NO	Y	
12. Faculty Private Offices	240	11	L	Y	M	NO	Y	
13. Hourly Childcare	400	restrooms & entry	L	Y	H	YES	N	
14. Mother's Room	64	13 & restrooms	L	Y	H	YES	N	
15. Wild Card Space	Varies	none	H	Y	L	NO	Y	

Adjacency Matrix



# FURNITURE PLAN



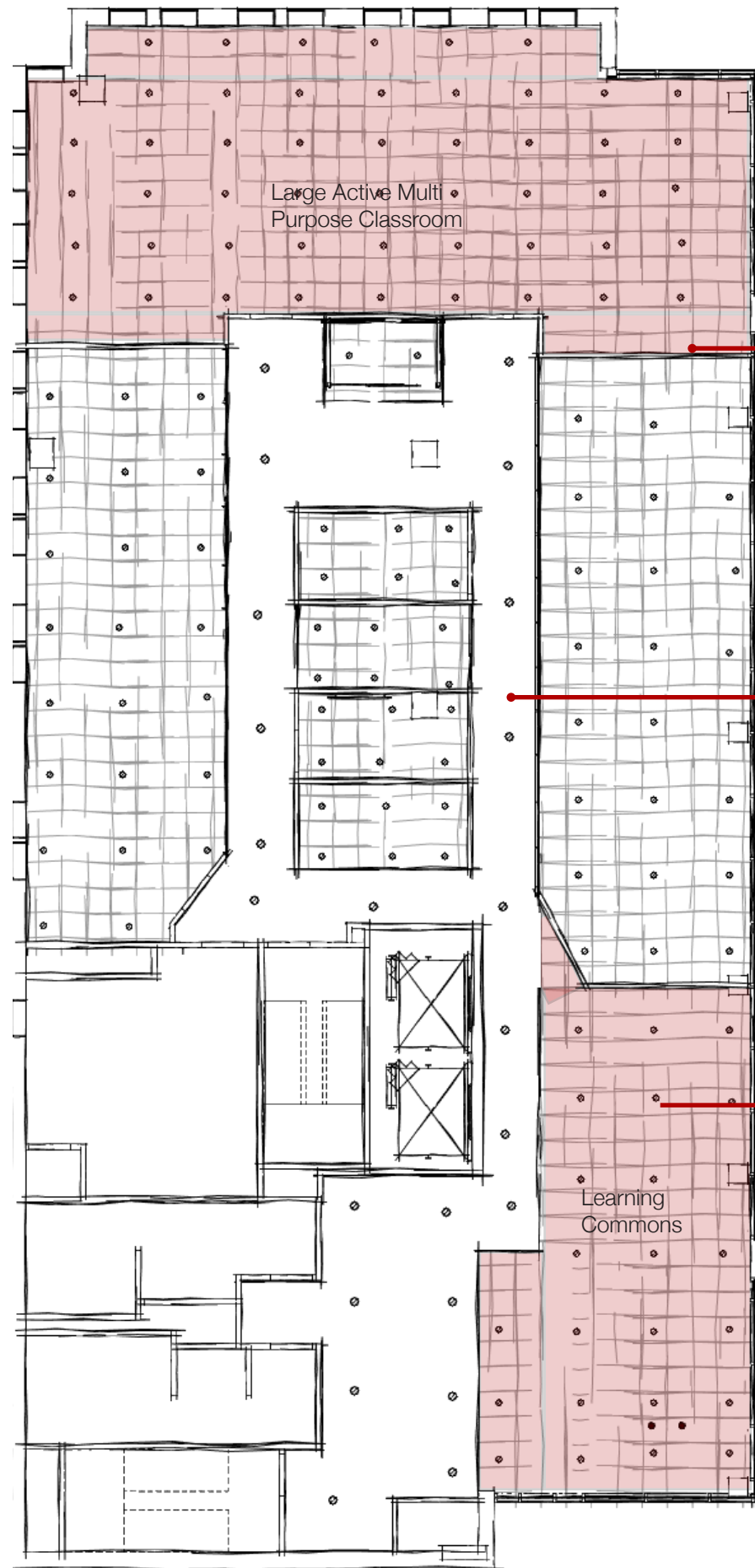
Level 10



Level 11



# REFLECTED CEILING PLAN



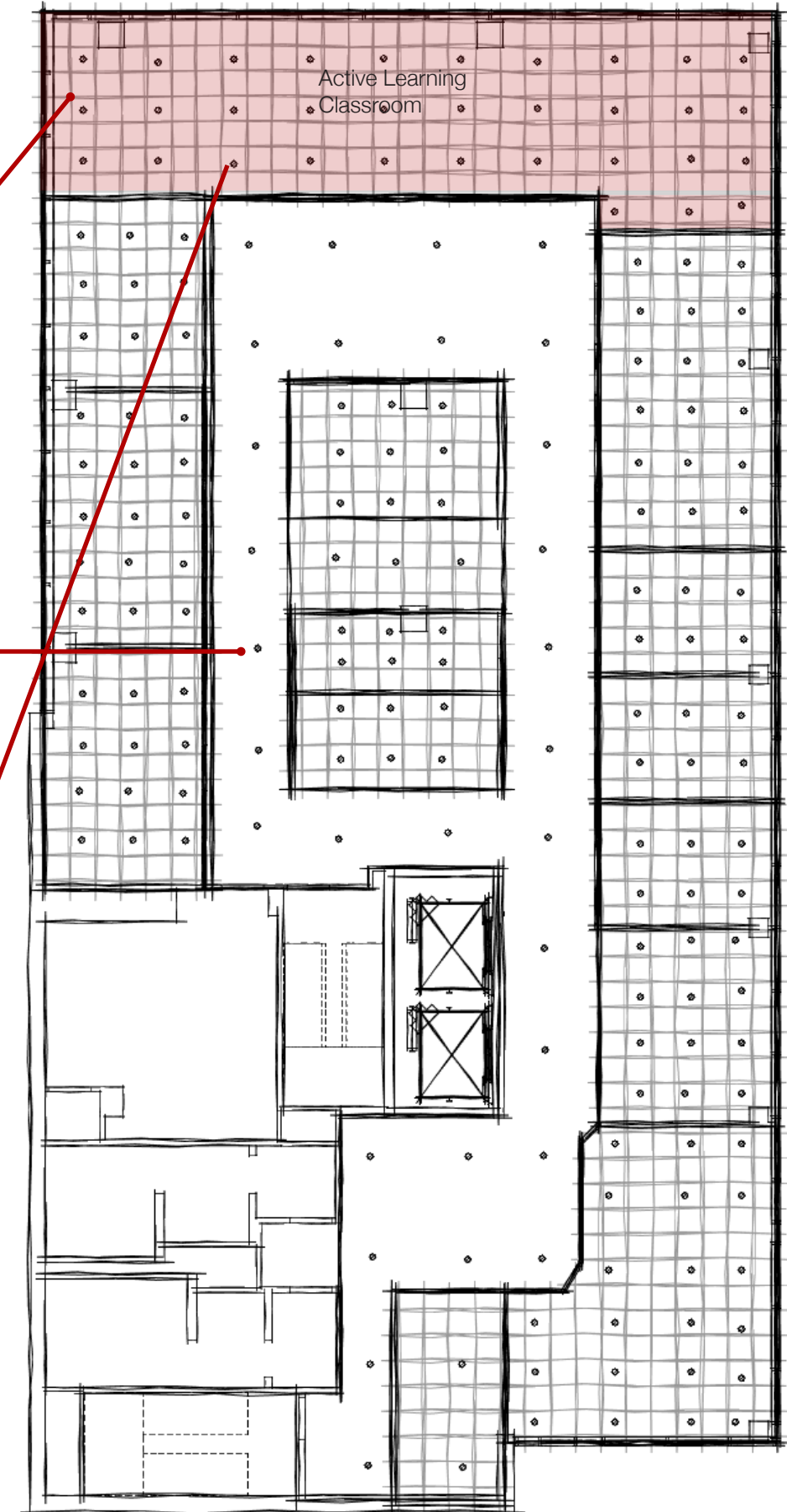
Level 10

2'x2' ACT System  
9'-0" AFF

GWB on Mtl. Stud  
9'-0" AFF



Philips CoreLine  
Batten Fixture



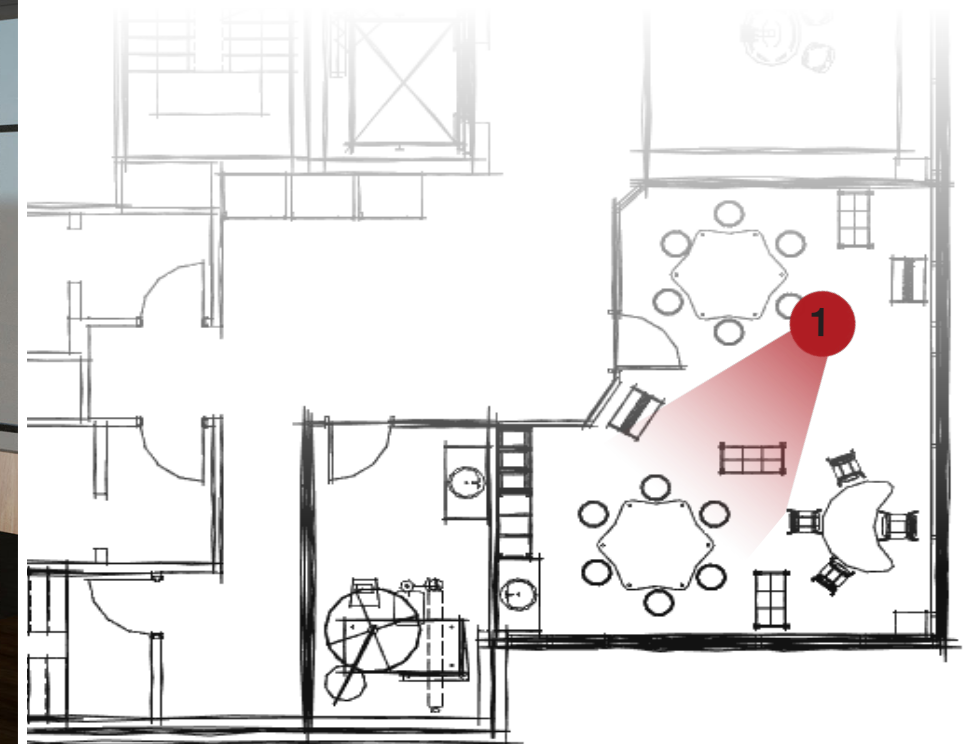
Level 11



# HOURLY CHILDCARE



Perspective 1



Enlarged Floor Plan

## Design Considerations:

- | Lighting control for user comfort
- | Acoustical ceiling panels for acoustical control
- | Carpet for acoustical control
- | Sink for cleaning purposes in the childcare area
- | Workspace for each student individually
- | Local artwork feature wall to relate to location
- | Views to the exterior to allow sunlight to enter the space
- | Different seating options for kids to learn and play at

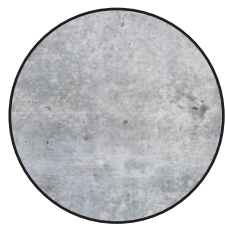


# HOURLY CHILDCARE

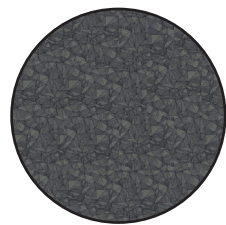


Perspective 1

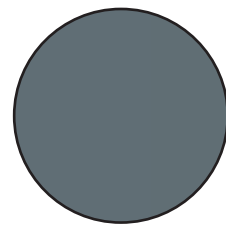
## Materials



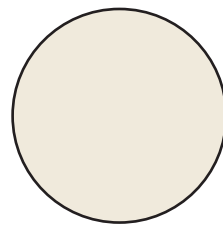
Existing  
Concrete



J+J Flooring  
Kinetex Carpet  
Dog Night

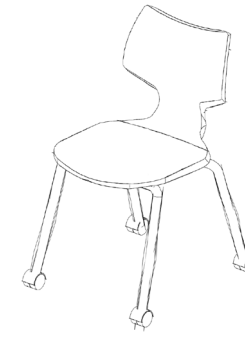


Sherwin Williams  
Sea Serpant

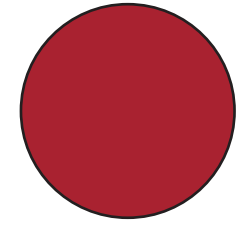


Sherwin Williams  
Dover White

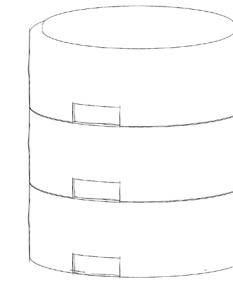
## Furniture



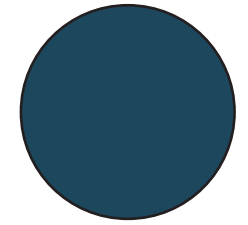
Smith System Flavors  
Mobile Stack Chair



Smith Systems  
Red



Smith Systems Oodle



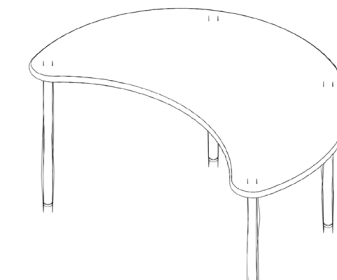
Smith Systems  
Navy



Smith Systems  
Elemental 6 Star Table



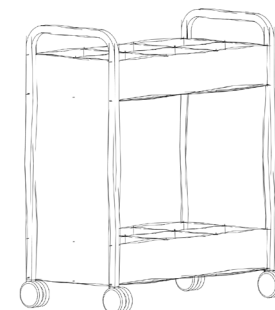
Smith Systems  
Fusion Maple



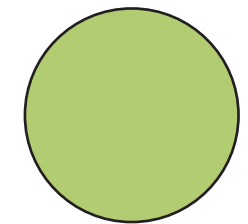
Smith Systems  
Elemental Moon Table



Smith Systems  
Fusion Maple



Smith Systems  
Booktruck Everything  
Cart



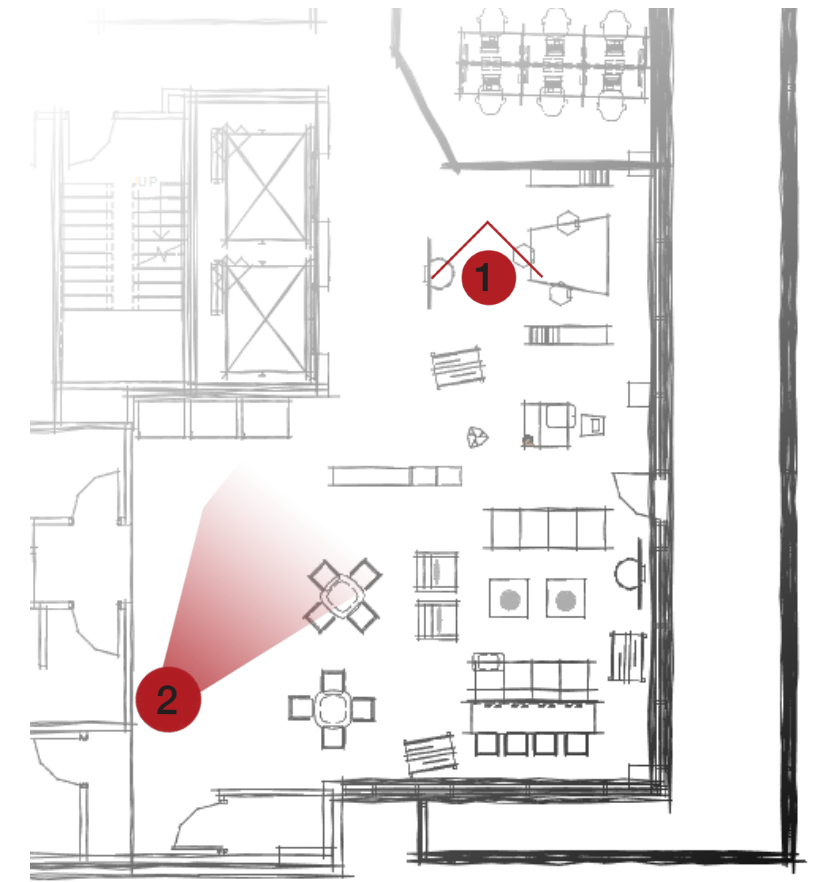
Smith Systems  
Apple



# LEARNING COMMONS



Perspective 2



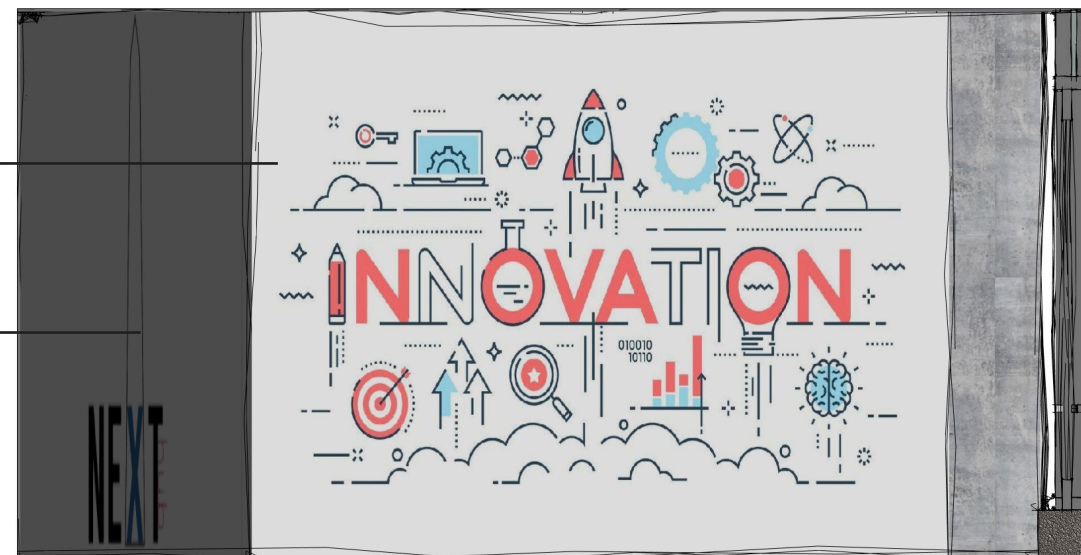
Enlarged Floor Plan

## Design Considerations:

- | Lighting control for user comfort
- | Acoustical ceiling panels for acoustical control
- | Local materials such as wood flooring
- | TV's to incorporate technology
- | Variety of seating options for user choice
- | Views to the exterior to allow sunlight to enter space
- | Wall graphic to allow for creativity in the space

Wall Graphic to reflect culture in space

Logo to brand space for users



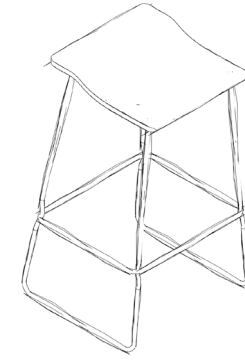
Elevation 1



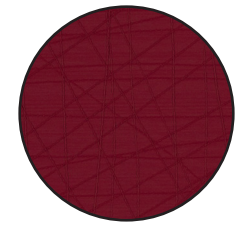
# LEARNING COMMONS



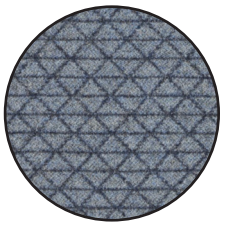
## Furniture



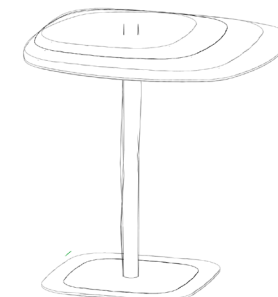
Steelcase Coalesse Last Minute Seating



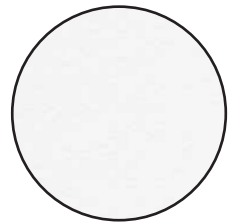
DesignTex Rove Rouge



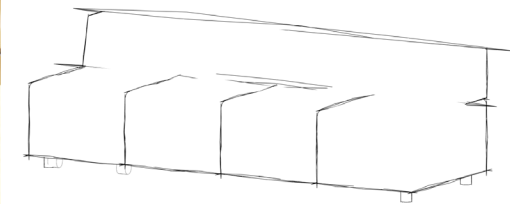
DesignTex Bixby Micro



Steelcase Coalesse Enae Lottus Table



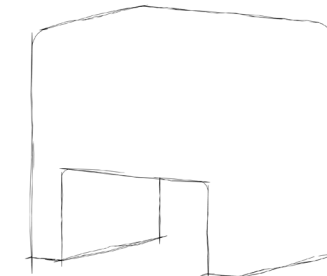
Steelcase Artic White



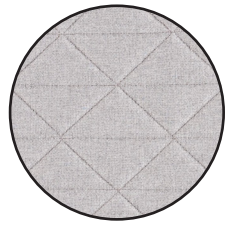
Steelcase Coalesse Await Seating



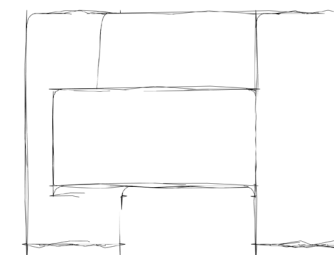
DesignTex Bute Tirie Peacock



Steelcase Coalesse Await Seating



DesignTex Burrard Concrete



Steelcase Coalesse Davos Seating



DesignTex Bute Tirie Poppy

Perspective 2

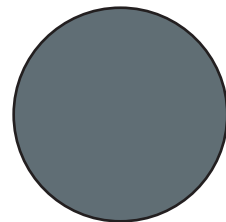
## Materials



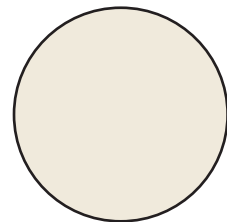
Existing Concrete



Shaw Flooring Terrain ii Thatch



Sherwin Williams Sea Serpant



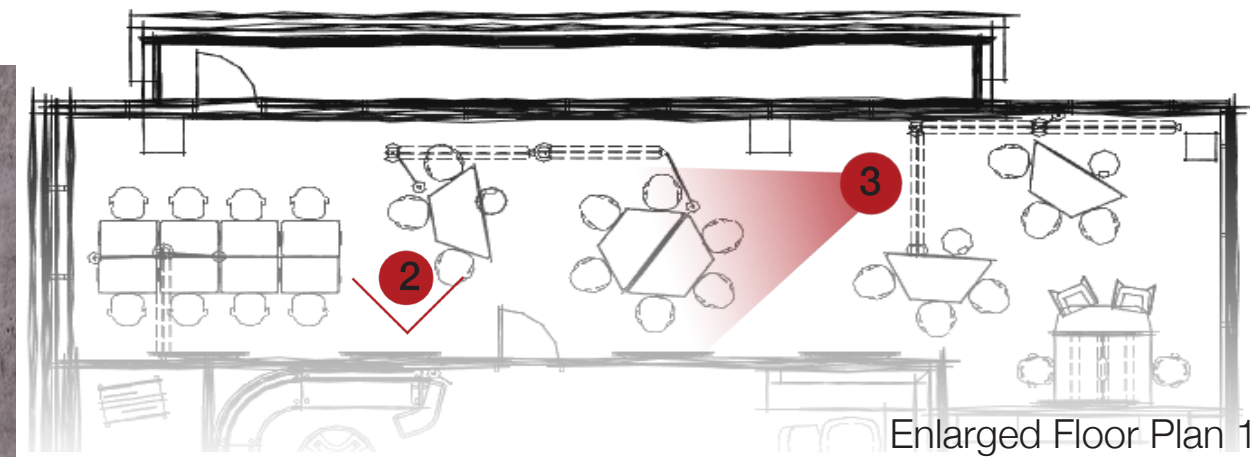
Sherwin Williams Dover White



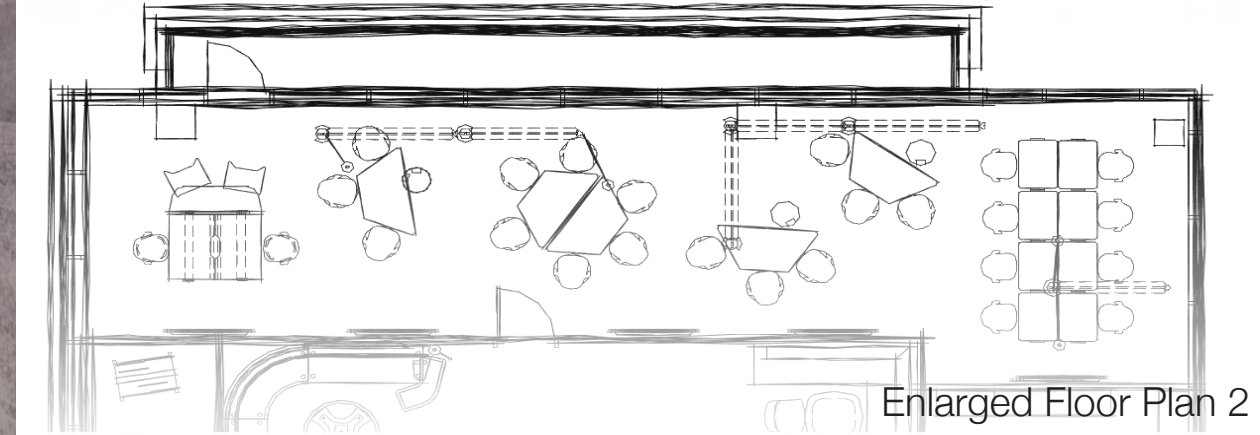
# ACTIVE CLASSROOM



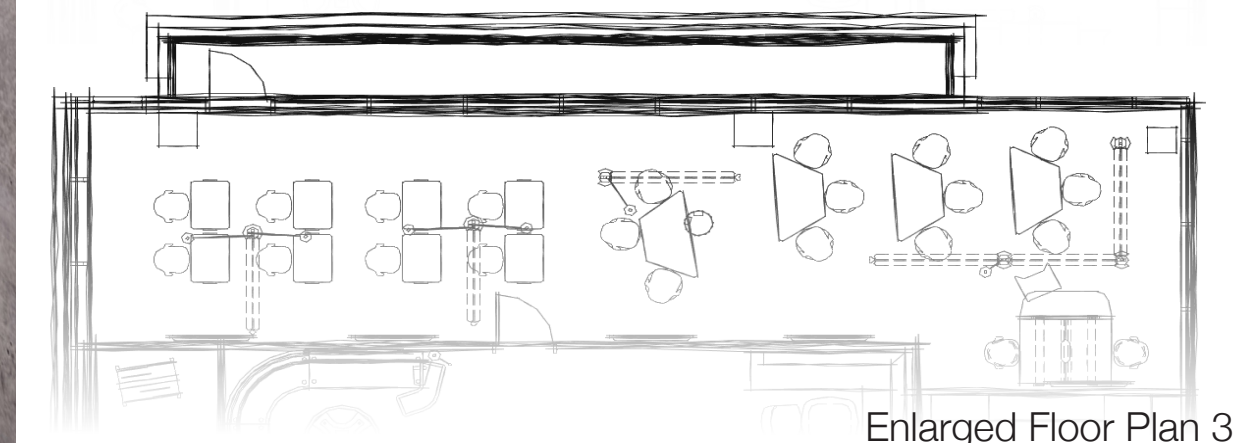
Perspective 3



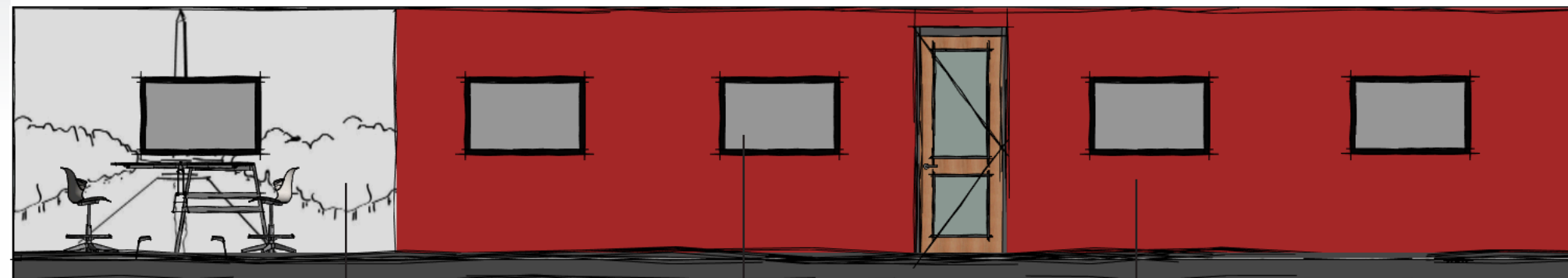
Enlarged Floor Plan 1



Enlarged Floor Plan 2



Enlarged Floor Plan 3



Elevation 2

Local artist wall graphic

TV's to intergrate technology

Red walls for pop of color and to relate to concept

## Design Considerations:

- | Acoustical ceiling panels for acoustical control
- | Carpet for acoustical control
- | TV's to incorporate technology
- | Variety of seating options for user choice
- | Views to the exterior to allow sunlight to enter space
- | Local artwork feature wall to relate to location



# ACTIVE CLASSROOM

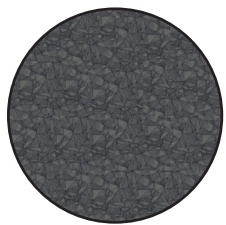


Perspective 3

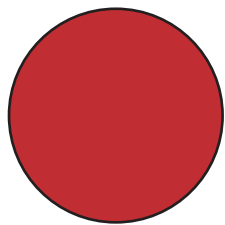
## Materials



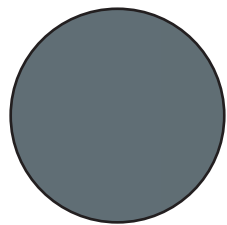
Existing  
Concrete



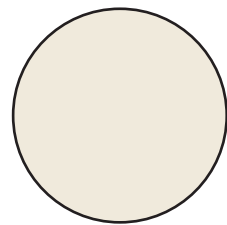
J+J Flooring  
Kinetex Carpet  
Dog Night



Sherwin Williams  
Real Red



Sherwin Williams  
Sea Serpant

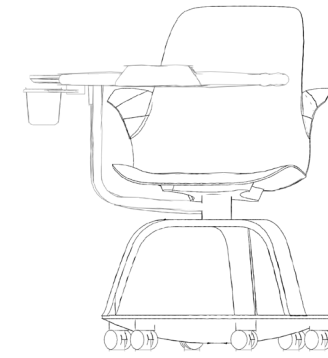


Sherwin Williams  
Dover White

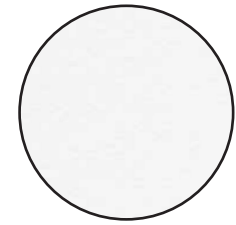


Steelcase Thread Power  
Hub2

## Furniture



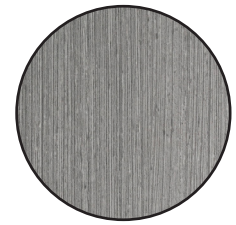
Steelcase Node 480  
Series Seating



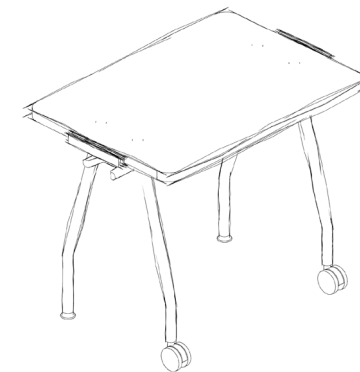
Steelcase  
Artic White



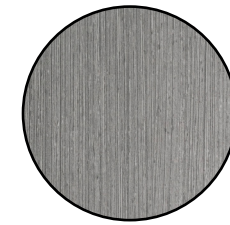
Steelcase Verb Trapezoid  
Post Leg Table



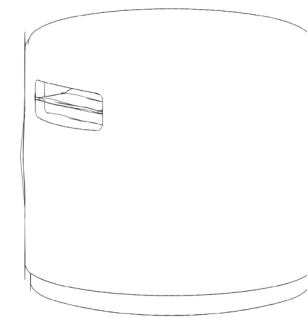
Steelcase  
Clay Wenge



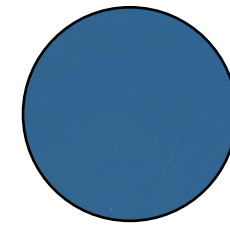
Steelcase Verb Personal  
Table



Steelcase  
Clay Wenge



Steelcase Turnstone  
Buoy Seating



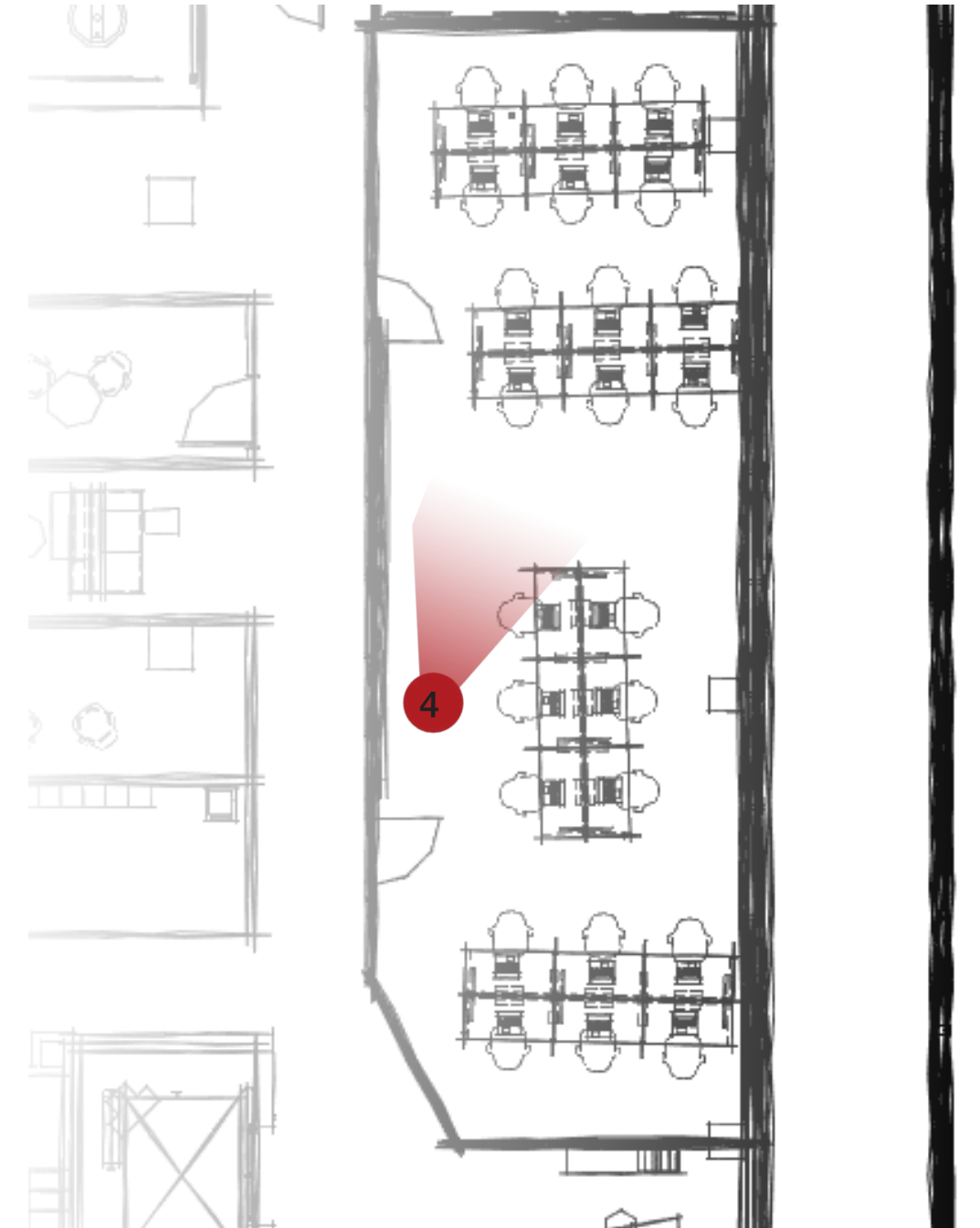
Steelcase  
Blue Jay



# COMPUTER LAB



Perspective 4



Enlarged Floor Plan

## Design Considerations:

- | Lighting control for user comfort
- | Acoustical ceiling panels for acoustical control
- | Carpet for acoustical control
- | Workspace for each student individually
- | Simplistic colors with pops of red for the chairs
- | Local artwork feature wall to relate to location
- | Views to the exterior to allow sunlight to enter the space
- | Ergonomic chairs for users in the space

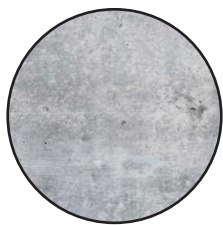


# COMPUTER LAB

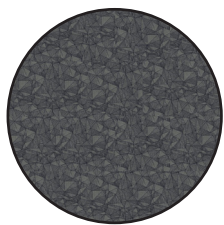


Perspective 4

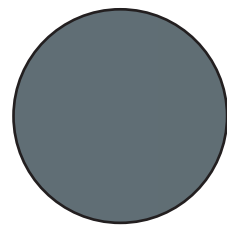
## Materials



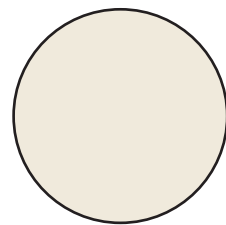
Existing  
Concrete



J+J Flooring  
Kinetex Carpet  
Dog Night



Sherwin Williams  
Sea Serpant

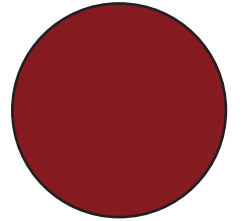


Sherwin Williams  
Dover White

## Furniture



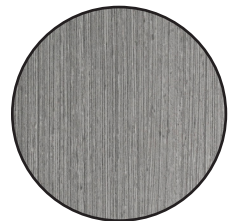
Steelcase Node 480  
Series Seating



Steelcase  
Red



Steelcase FrameOne Dual  
Sided Table



Steelcase  
Clay Wenge

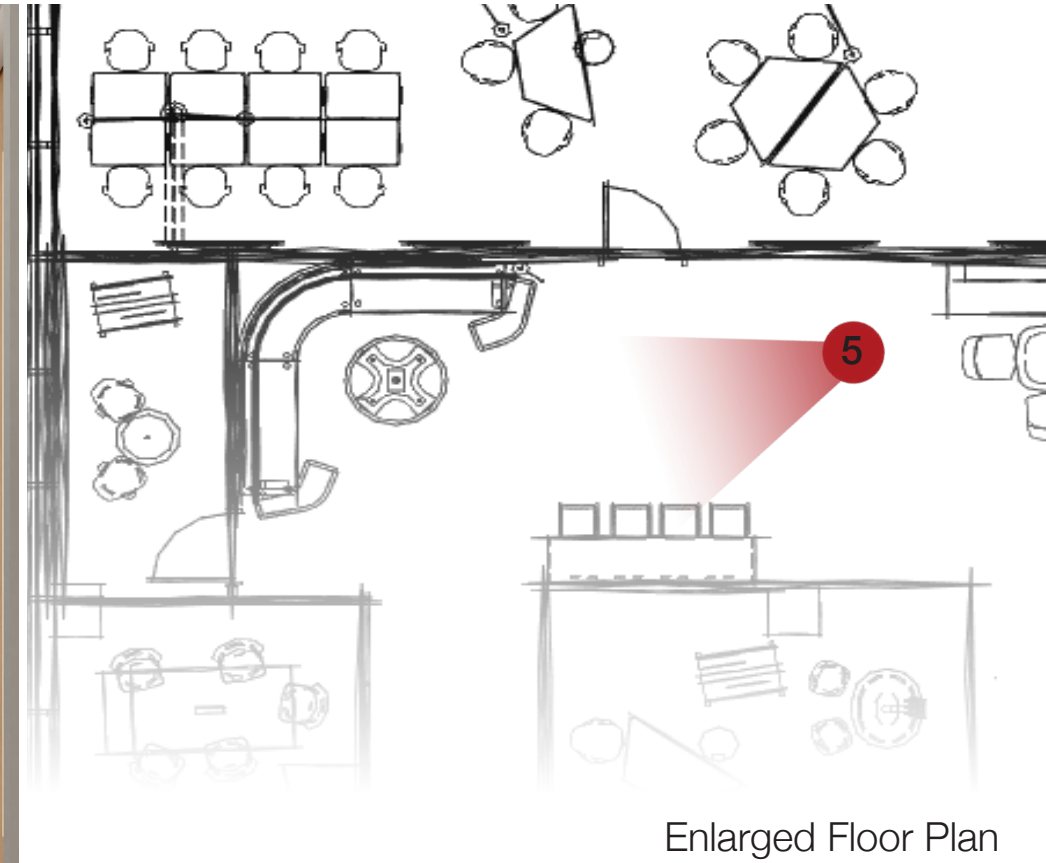


Steelcase Thread Power  
Hub2





Perspective 5



## Design Considerations:

- | Lighting control for user comfort
- | Acoustical ceiling panels for acoustical control
- | Local materials such as wood flooring for wayfinding
- | Power outlets for users at any time

- | Variety of seating options for user choice
- | Local artwork feature wall to relate to location
- | Open area to allow for collaboration among others
- | Seating outside of classrooms for in-between use



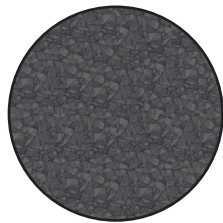


Perspective 5

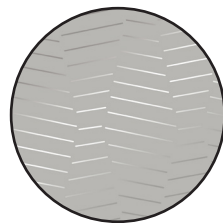
## Materials



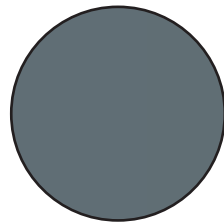
Shaw Flooring  
Terrain ii Thatch



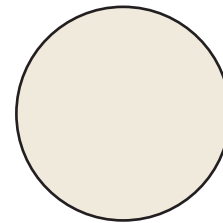
J+J Flooring  
Kinetex Carpet  
Dog Night



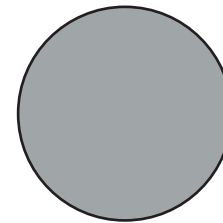
Wolf Gordon  
Echo Mylar Soft  
Gray



Sherwin Williams  
Sea Serpant



Sherwin Williams  
Dover White

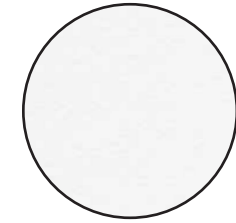


Sherwin Williams  
Network Gray

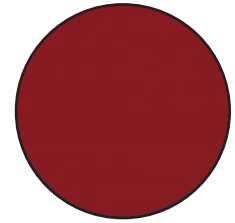
## Furniture



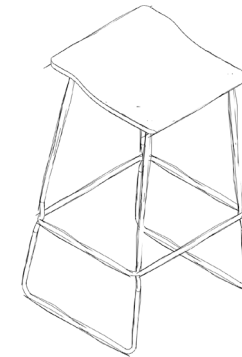
Steelcase Node 480  
Series Seating



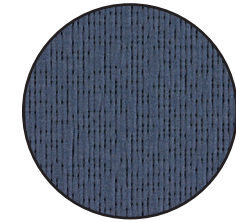
Steelcase  
Artic White



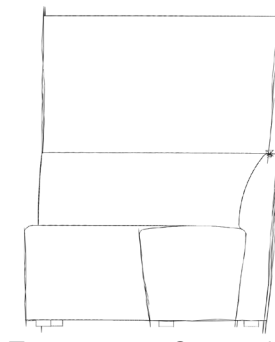
Steelcase  
Red



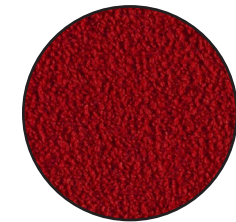
Steelcase Coalesce Last  
Minute Seating



DesignTex  
Clay Wenge



Turnstone Campfire  
Lounge System



DesignTex  
Bute Tیره Poppy



Steelcase Thread Power  
Hub2



# Faculty Office/Hallway



Perspective 6



Enlarged Floor Plan

## Design Considerations:

- | Lighting control for user comfort
- | Acoustical ceiling panels for acoustical control
- | Local materials such as wood flooring for wayfinding
- | Pattern glass in faculty offices for privacy
- | Variety of seating options for user choice
- | Carpet for acoustical control
- | Open area to allow for collaboration among others
- | Red wall to highlight large architectural features in the space

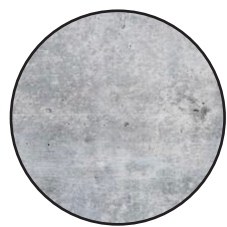


# Faculty Office/Hallway



Perspective 6

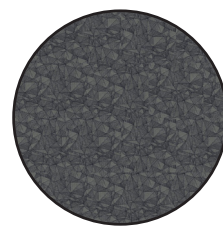
## Materials



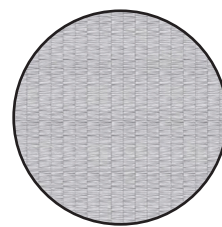
Existing  
Concrete



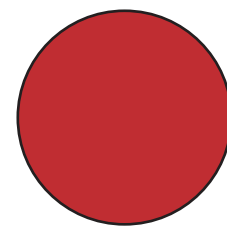
Shaw Flooring  
Terrain ii Thatch



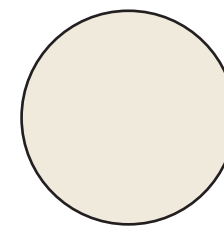
J+J Flooring  
Kinetex Carpet  
Dog Night



Skydesign  
Horizontal Small  
Option A

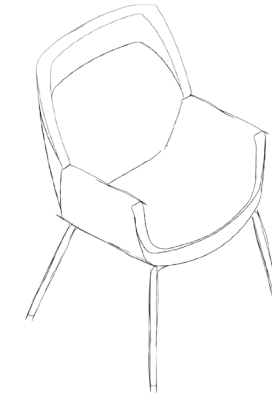


Sherwin Williams  
Real Red Paint

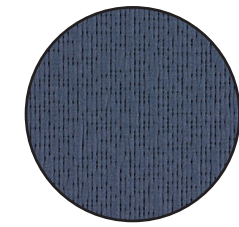


Sherwin Williams  
Dover White

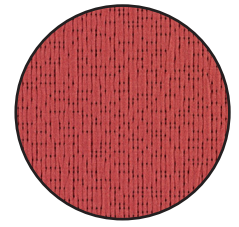
## Furniture



Steelcase Node 480  
Series Seating



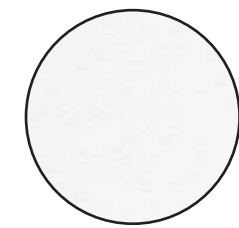
DesignTex  
Mateo Dark  
Blue



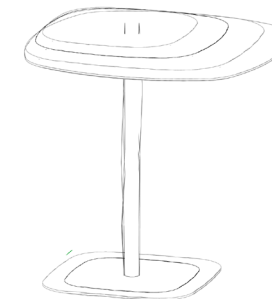
DesignTex  
Mateo Dark  
Red



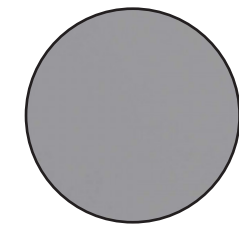
Steelcase Coalesce  
Enea Lottus Seating



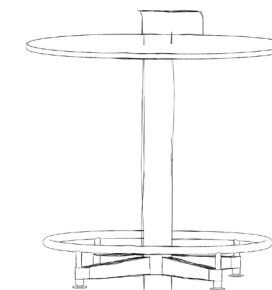
Steelcase  
Artic White



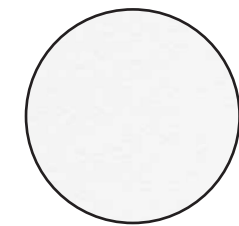
Steelcase Coalesce  
Enea Lottus Table



Steelcase  
Nickel



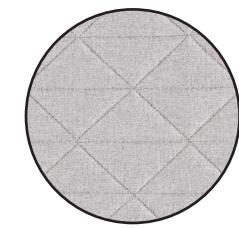
Steelcase ScapeSeries  
Table



Steelcase  
Artic White



Steelcase Bolia Float  
Bench



DesignTex  
Burrard Concrete



# Questions?

