



BRIGGS LIBRARY

BRIGGS LIBRARY

Keely Schild
ID 352- Studio IV
April 29th, 2020

Project Description

Hilton M. Briggs Library

To re-consider the Hilton M. Briggs Library by thinking creatively and intentionally about what a forward-looking library should be, how it should function, and what scholarly and social learning goals it might serve. Provide an alternative place for users of all ages to gather, connect, explore and engage in lifelong learning experiences.

Design Considerations

- + Offer variety of work spaces
- + Promote collaboration
- + Howard Gardner's theory of multiple intelligences

Social

Coffee shop, open and flexible work spaces, to provide the social and casual atmosphere desired.

Collaborative

A place for people to come to gain knowledge, have access to resources, and to socialize and be a part of academic community.

Technological

Offer technology to users from outlets to virtual reality in the space. Easy to use technology at users convenience.

Client Profile



Kristi Tornquist
Staff

Students

Community Members

Hilton M. Briggs Library is located in the center of South Dakota State Universities Campus and the central hub for everyone.

Space Requirements

Usable SQ.FT. = 35,251



Library
Services



Intern
Library
Loan



Library
Administration



Information
Services



Writing
Center



Coffee
Services



Teaching/
Learning
Center



Classrooms



Conference
Rooms



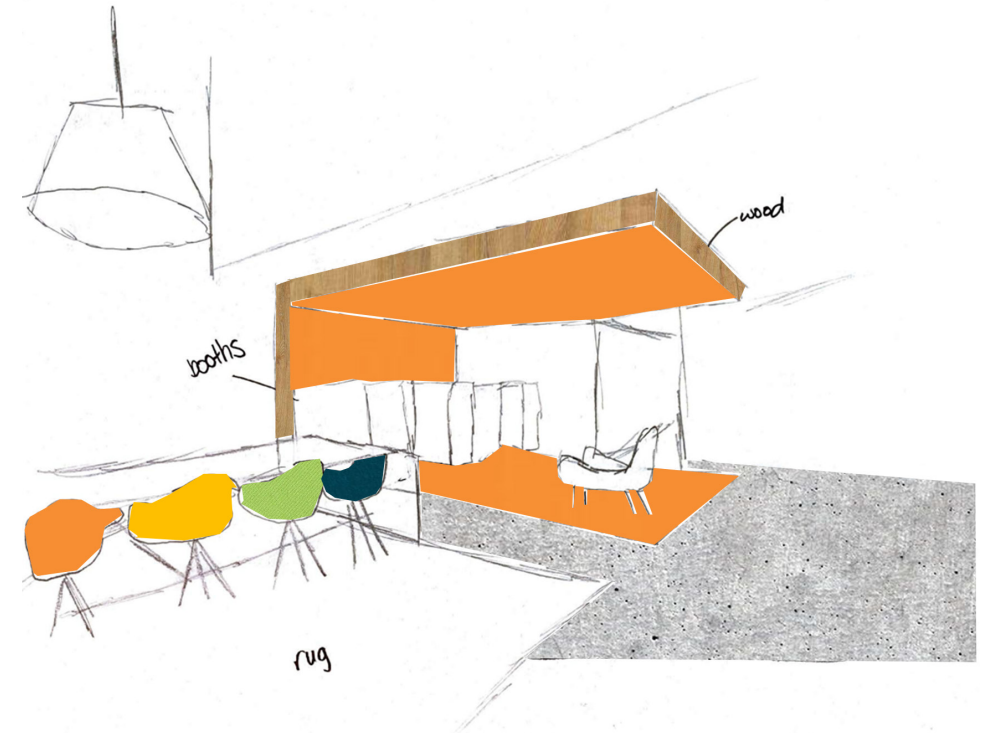
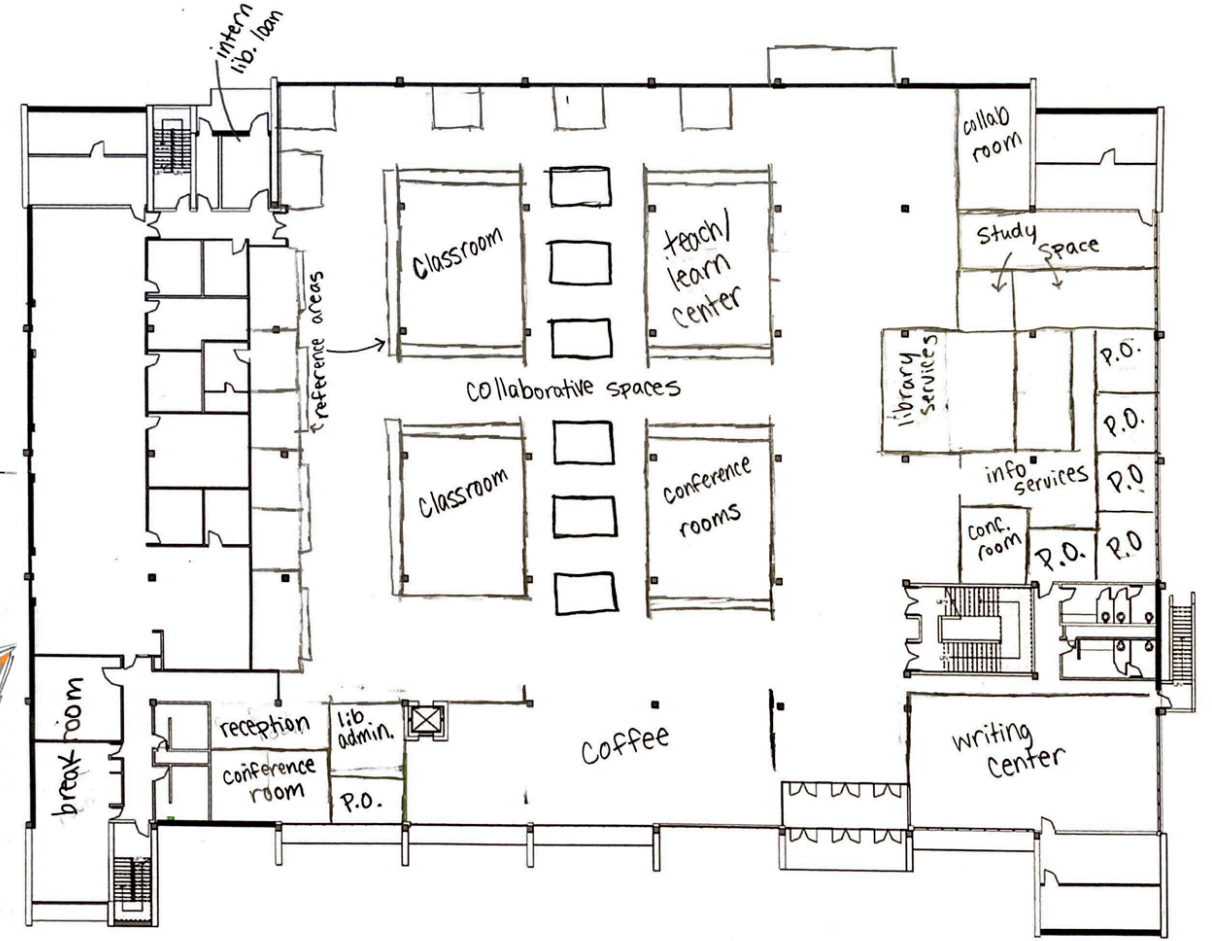
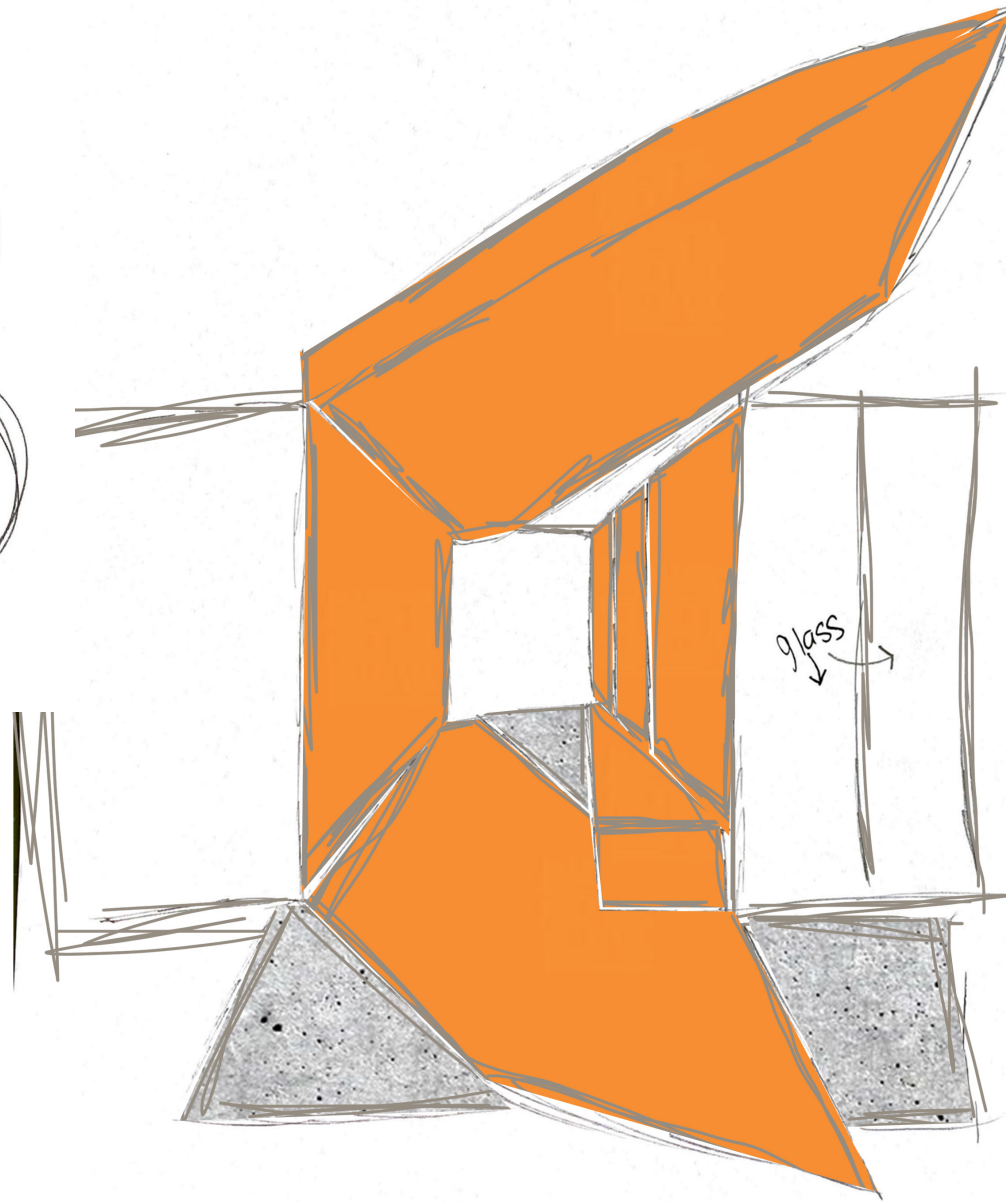
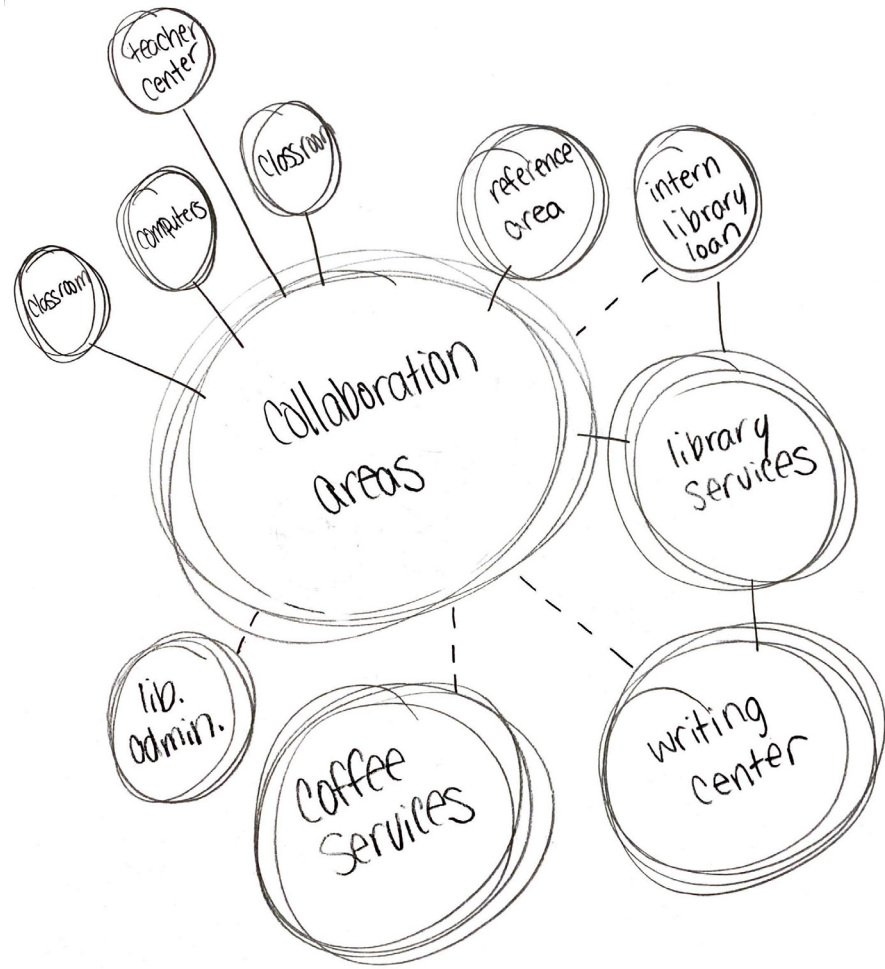
Reference
Areas



Collaborative/
Study Spaces

Concept Development

BUBBLE DIAGRAM – FIT DIAGRAM – HAND SKETCHES





South Dakota State University

- + Located in Brookings, SD
- + **11,518** students currently enrolled
- + **50** states and **83** countries
- + **82** majors, **94** minors and **36** master's degree programs
- + **9** different colleges

Established in

1881

BRUTALIST ARCHITECTURE

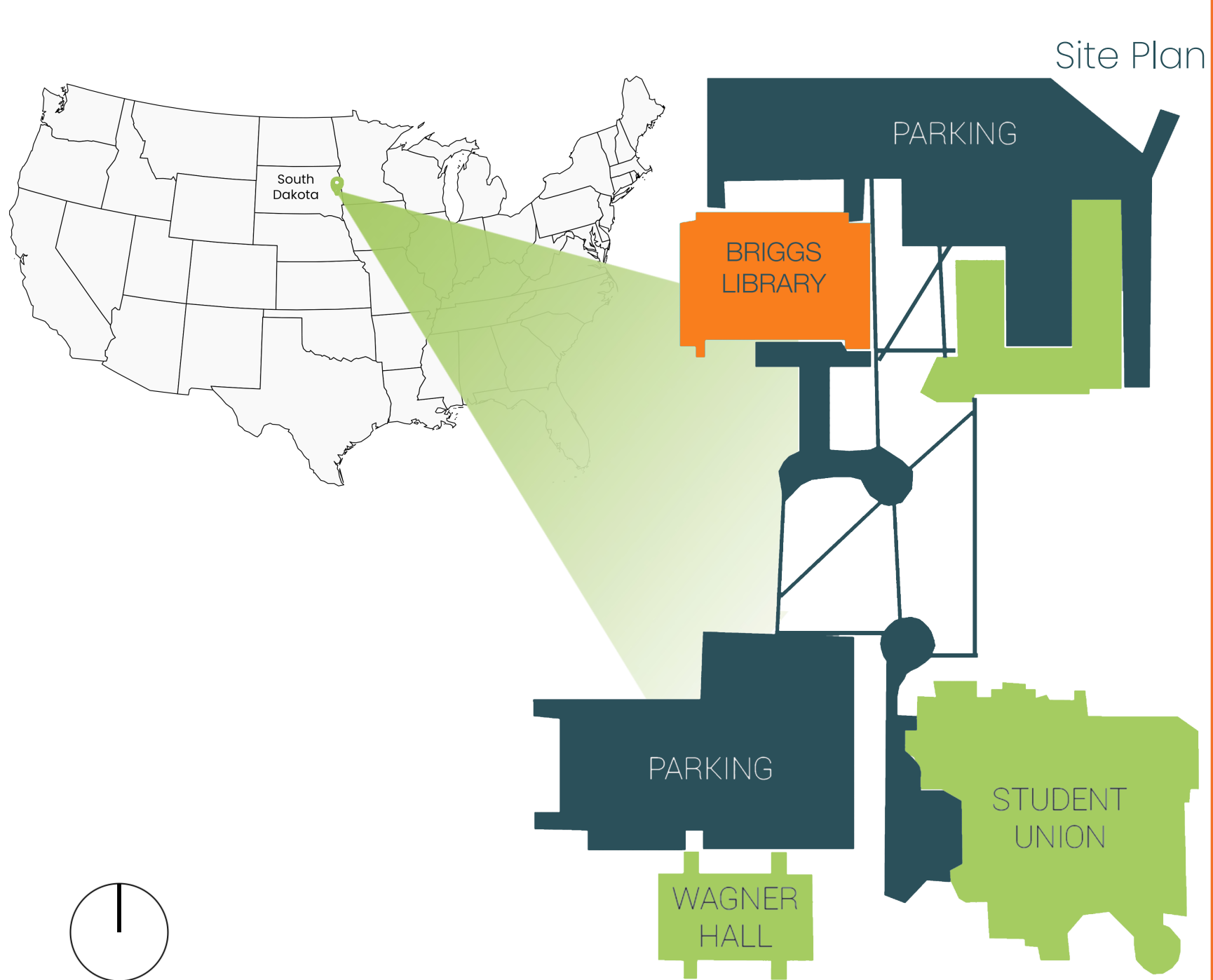
Repeating concrete masses

Concrete columns and brick

Built in 1974

Waffle ceiling

South Facing



Briggs Library

SDSU Campus

+ South Facing

+ Wheelchair Accessible

+ Year Built: 1974



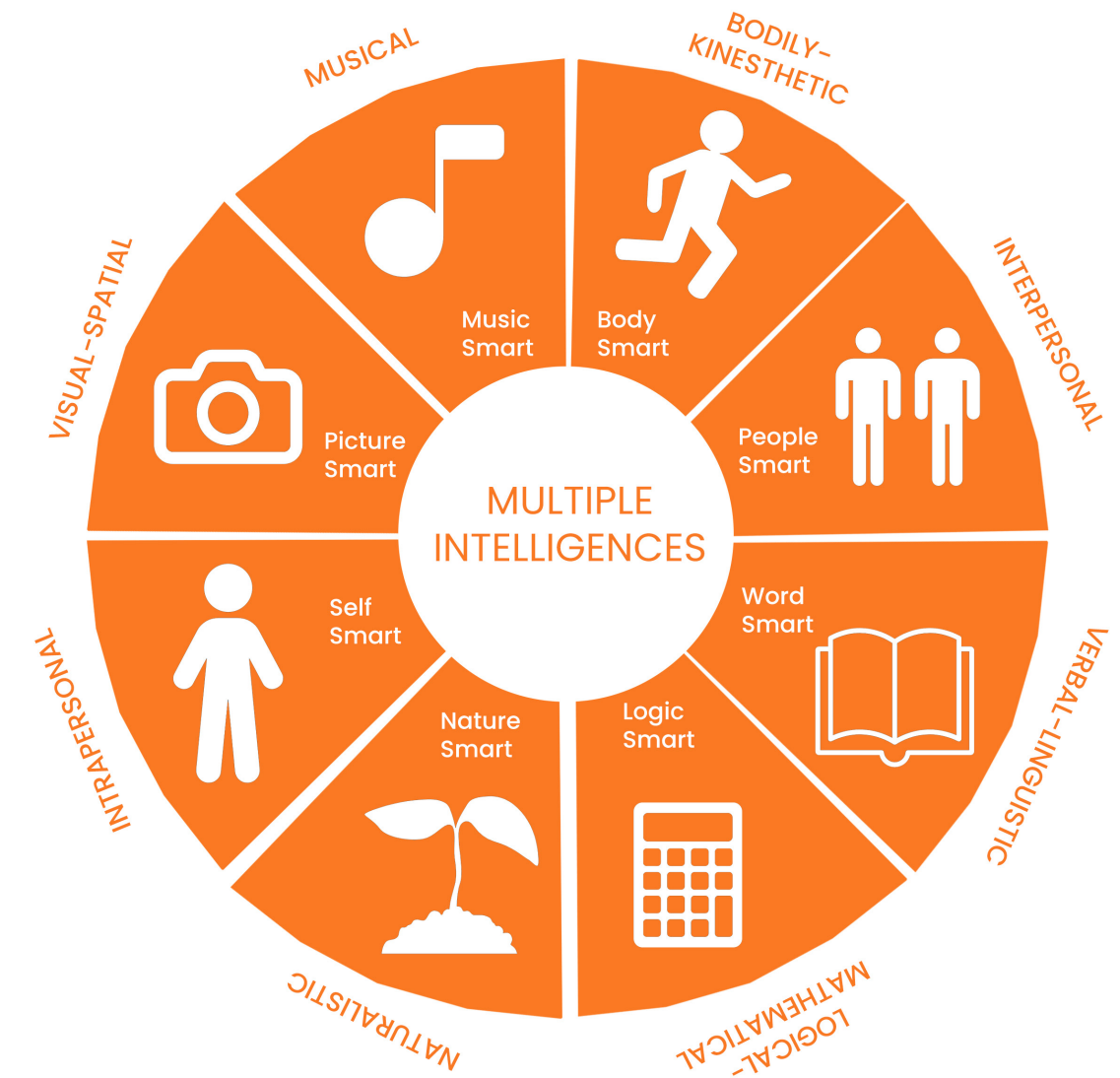
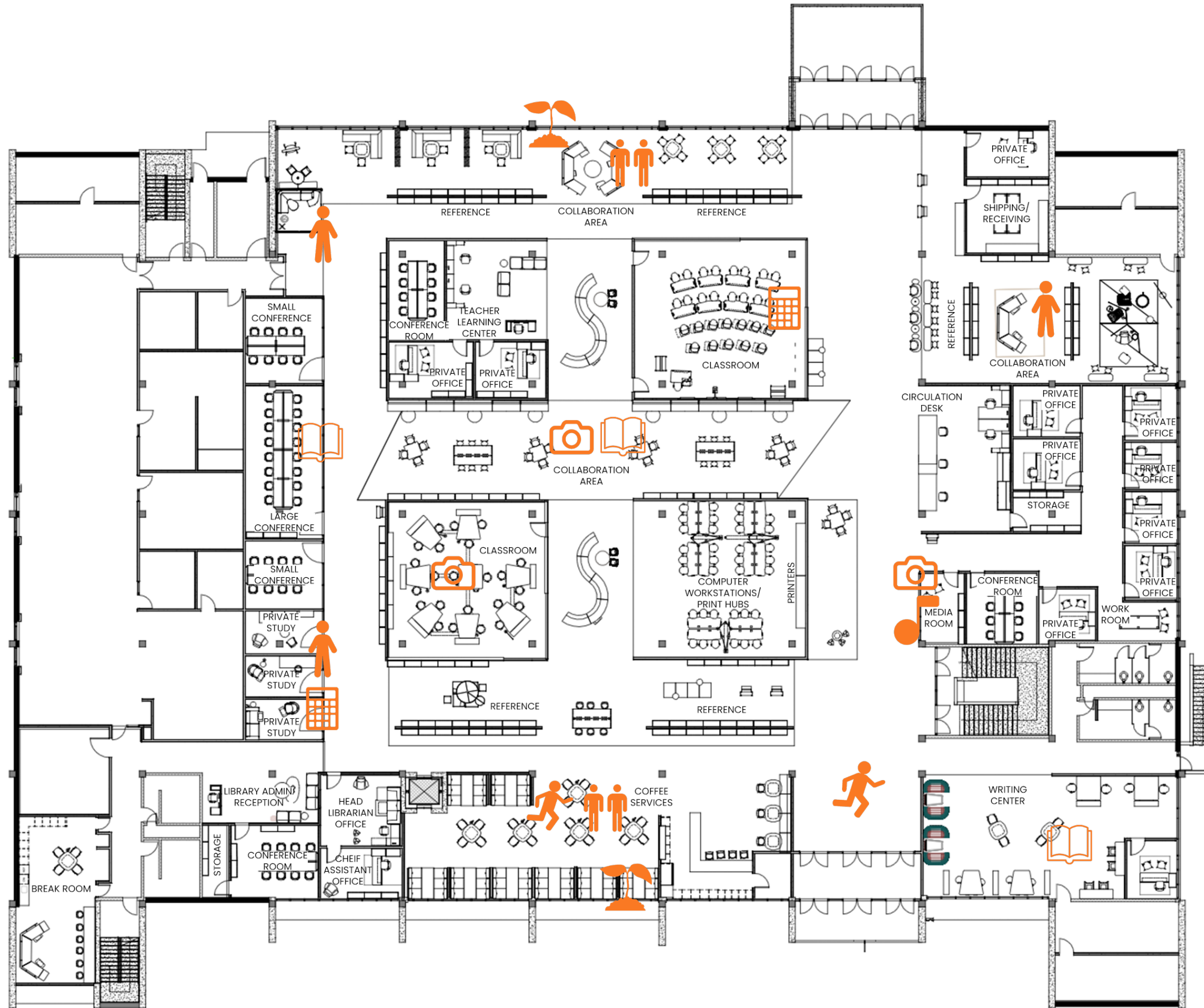
Hilton M. Briggs Library
Brookings, SD 57007

Theory

Howard Gardner's Theory of Multiple Intelligences

- + Gardner theorizes that people do not have just an intellectual capacity, but have many kinds of intelligence, including musical, interpersonal, spatial-visual, and linguistic intelligences.
- + Provides eight different potential pathways to learning
- + Gives adults a whole new way to look at their lives

Theory Applied



Precedent

Parks Library

Architects

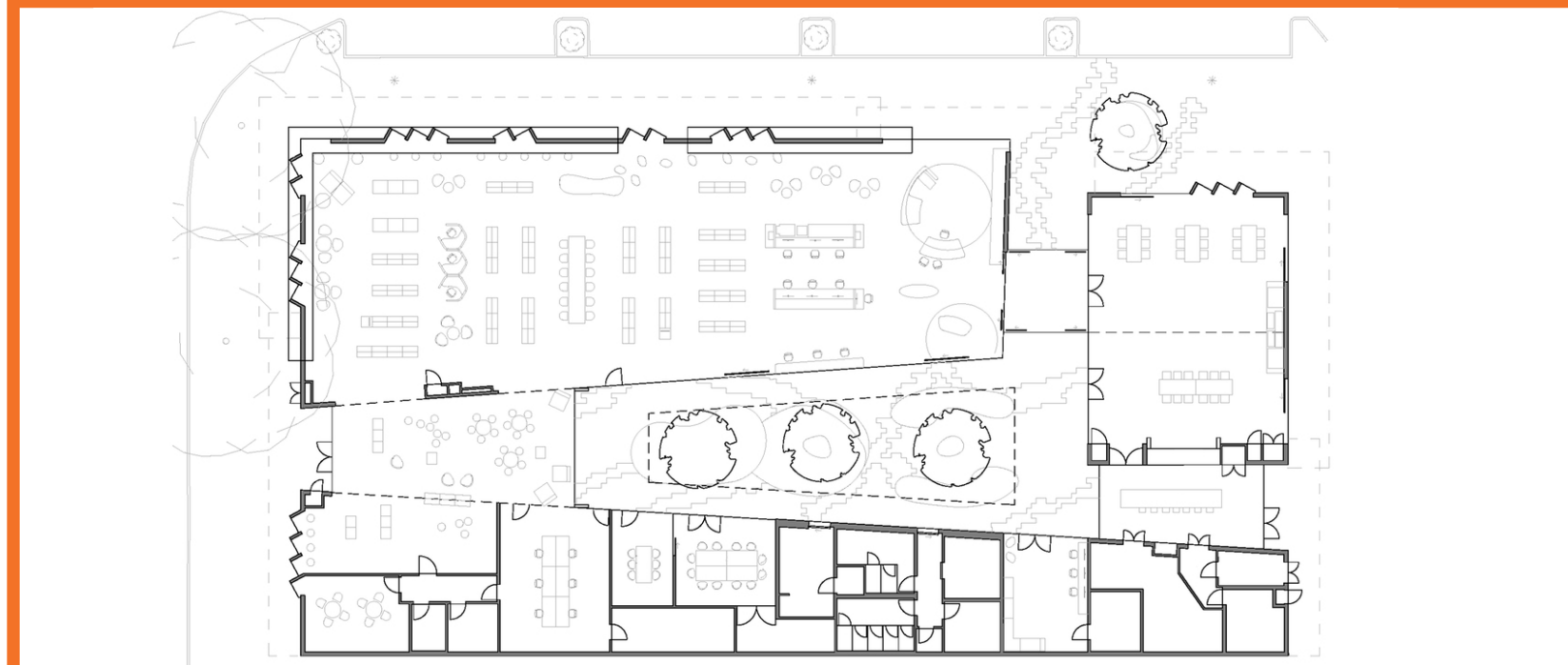
+ JPR Design Studio

Area

+ 1458.0 m

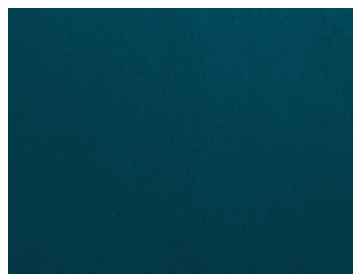
Year

+ 2018



Mood Board

ENERGETIC REVIVAL





Inspiration Board

Goals + Objectives

INCREASE COLLABORATION

- + incorporate social zones throughout the space
- + centralized area utilized for collaboration
- + coffee service for seating and various use of activities

VARIETY OF WORK SPACES

- + lounge seating, traditional seating and stand furniture
- + open & enclosed work areas
- + technology provided zones

RESTORE EXISTING MATERIALS

- + uncover existing waffle ceiling and columns
- + utilize existing shelving
- + connect brutalist architecture inside and outside

Materials



Shaw Flooring
Terrain ii Thatch



Shaw Haven Ivy



Shaw Symmetry
Pause

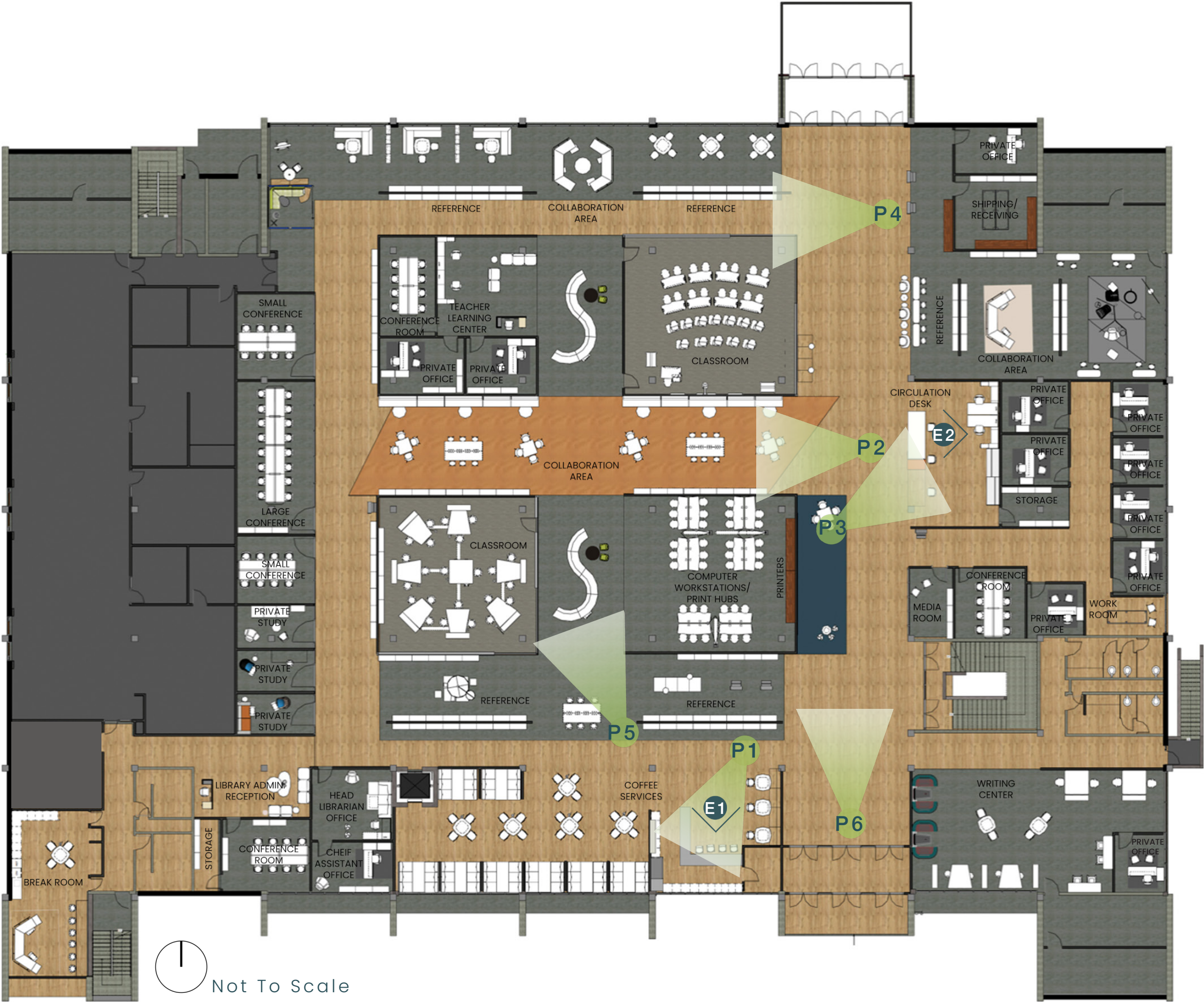


Shaw Shadows
Orange Carpet



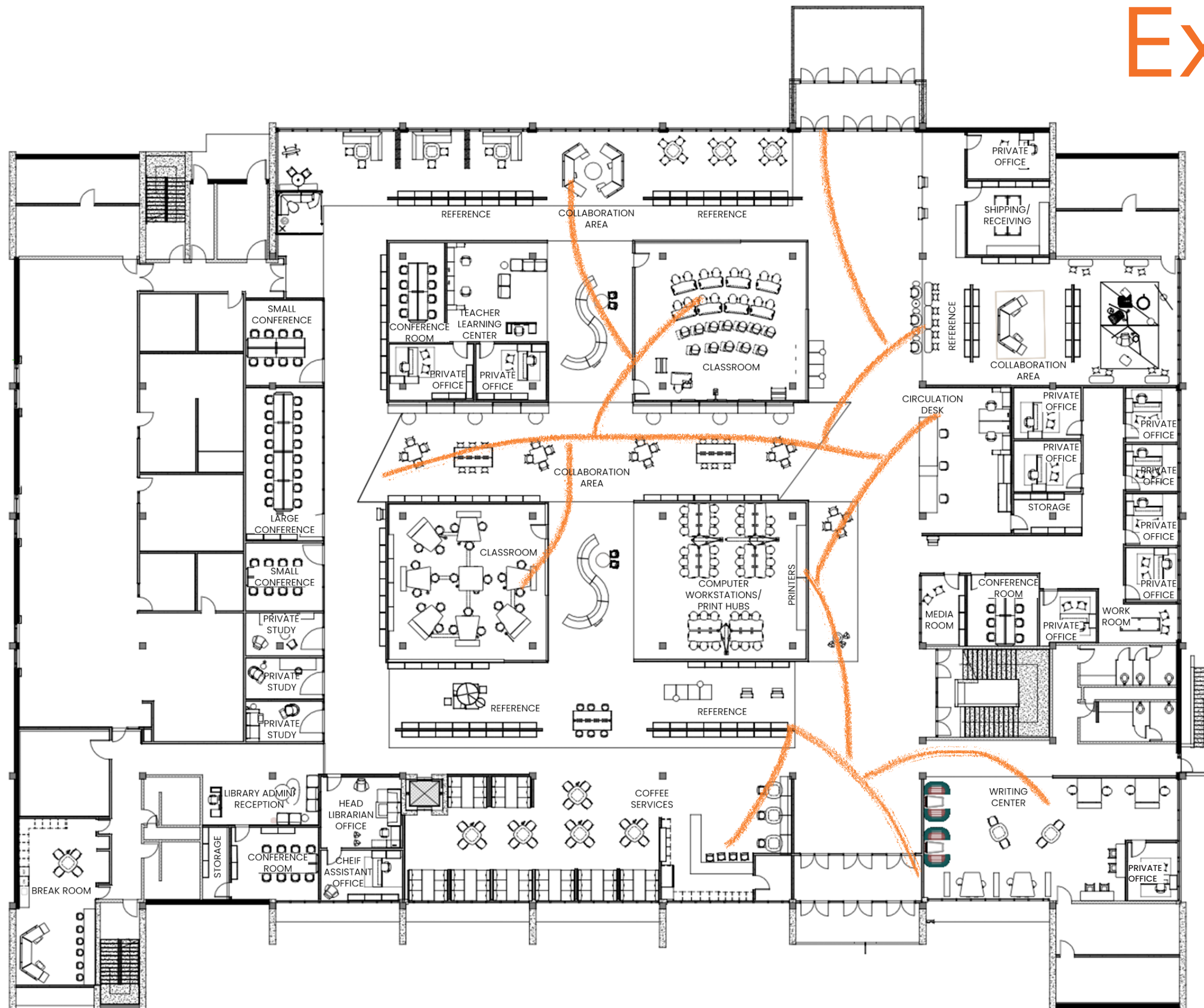
Shaw Shadows
Highlight Carpet



Floor Plan



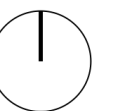
Not To Scale

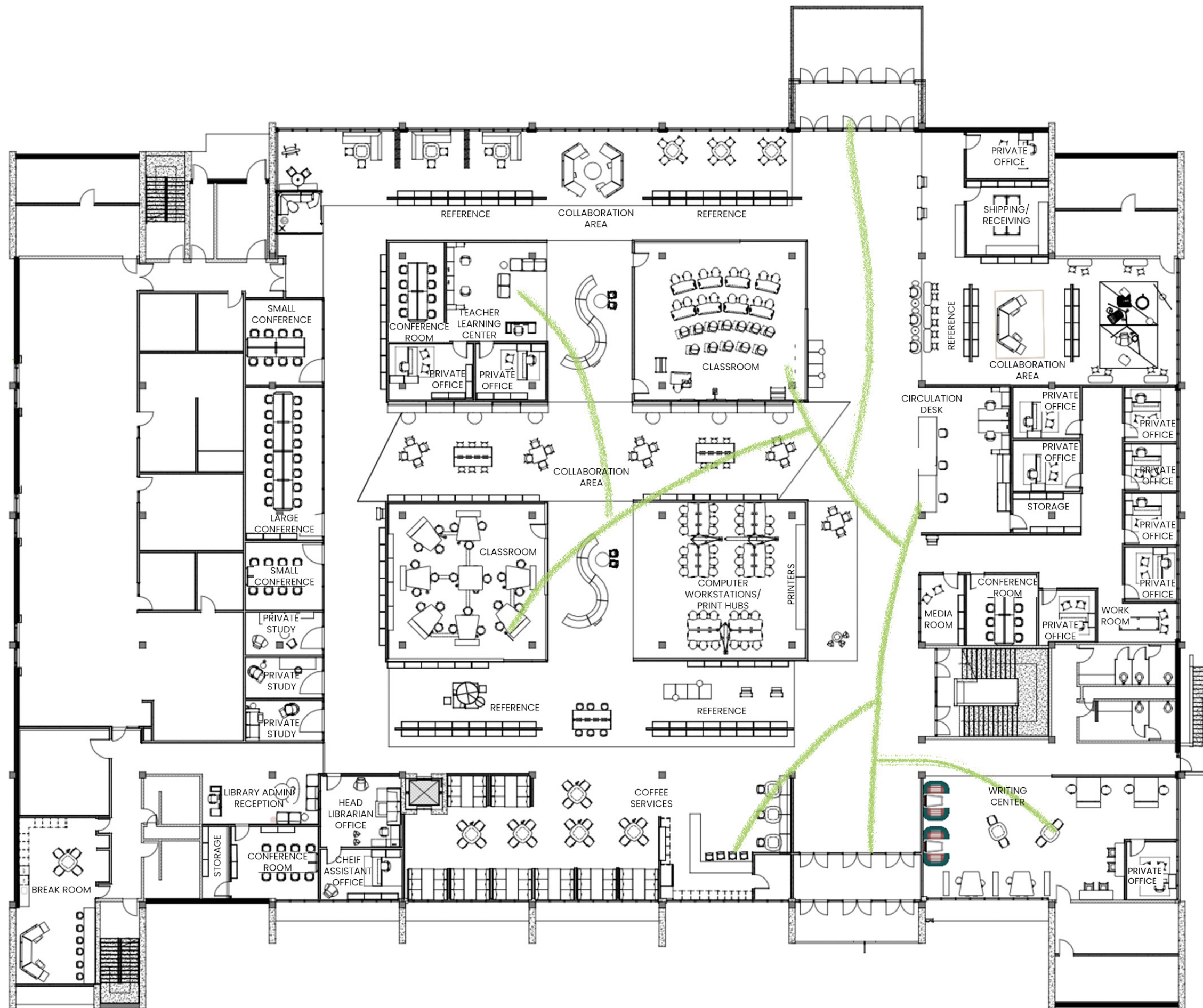
Experience Plan







-  Students
-  Faculty
-  Community Members
-  Staff

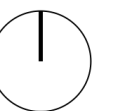
Not To Scale

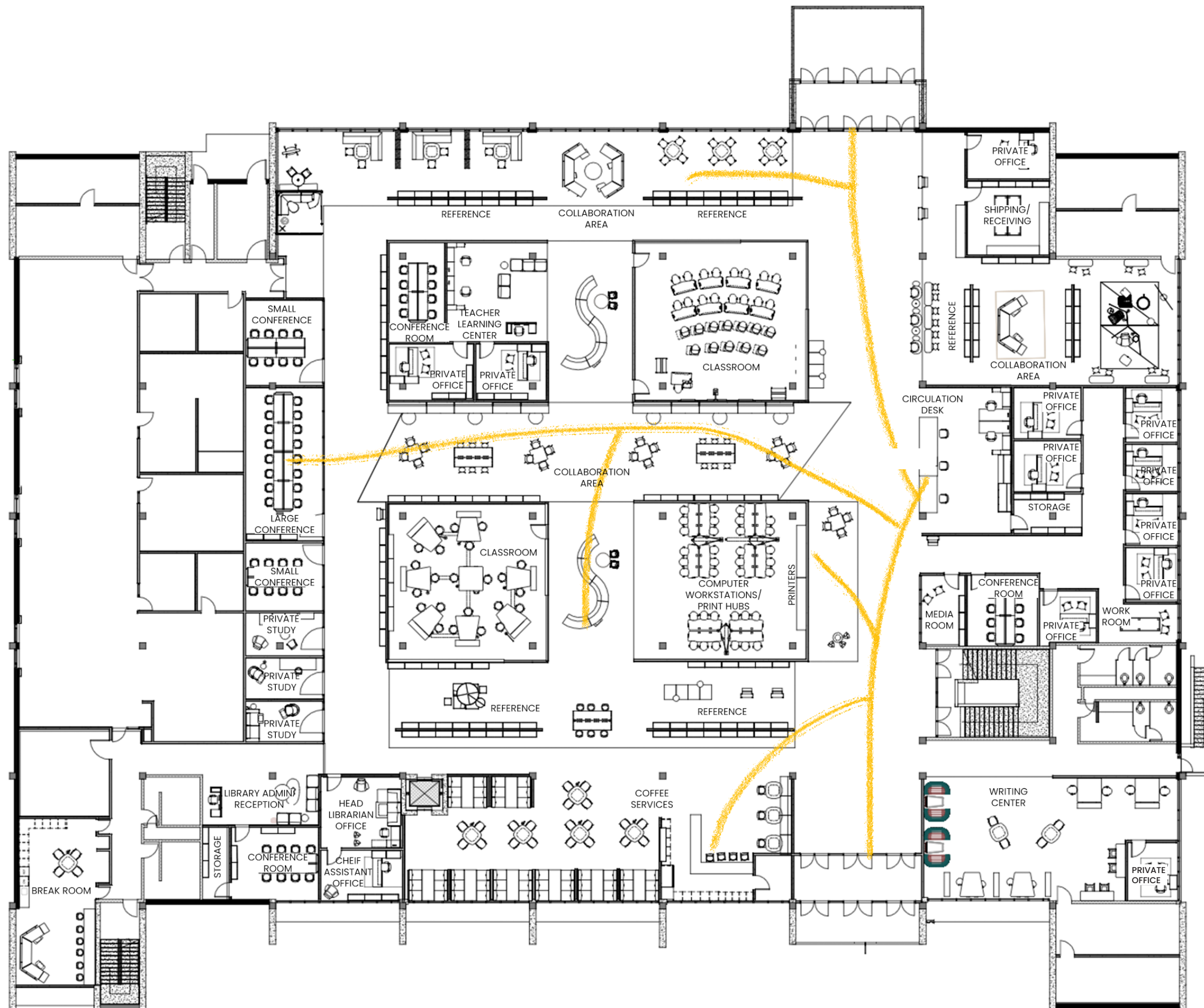




-  Students
-  Faculty
-  Community Members
-  Staff

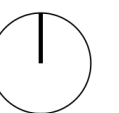
Not To Scale

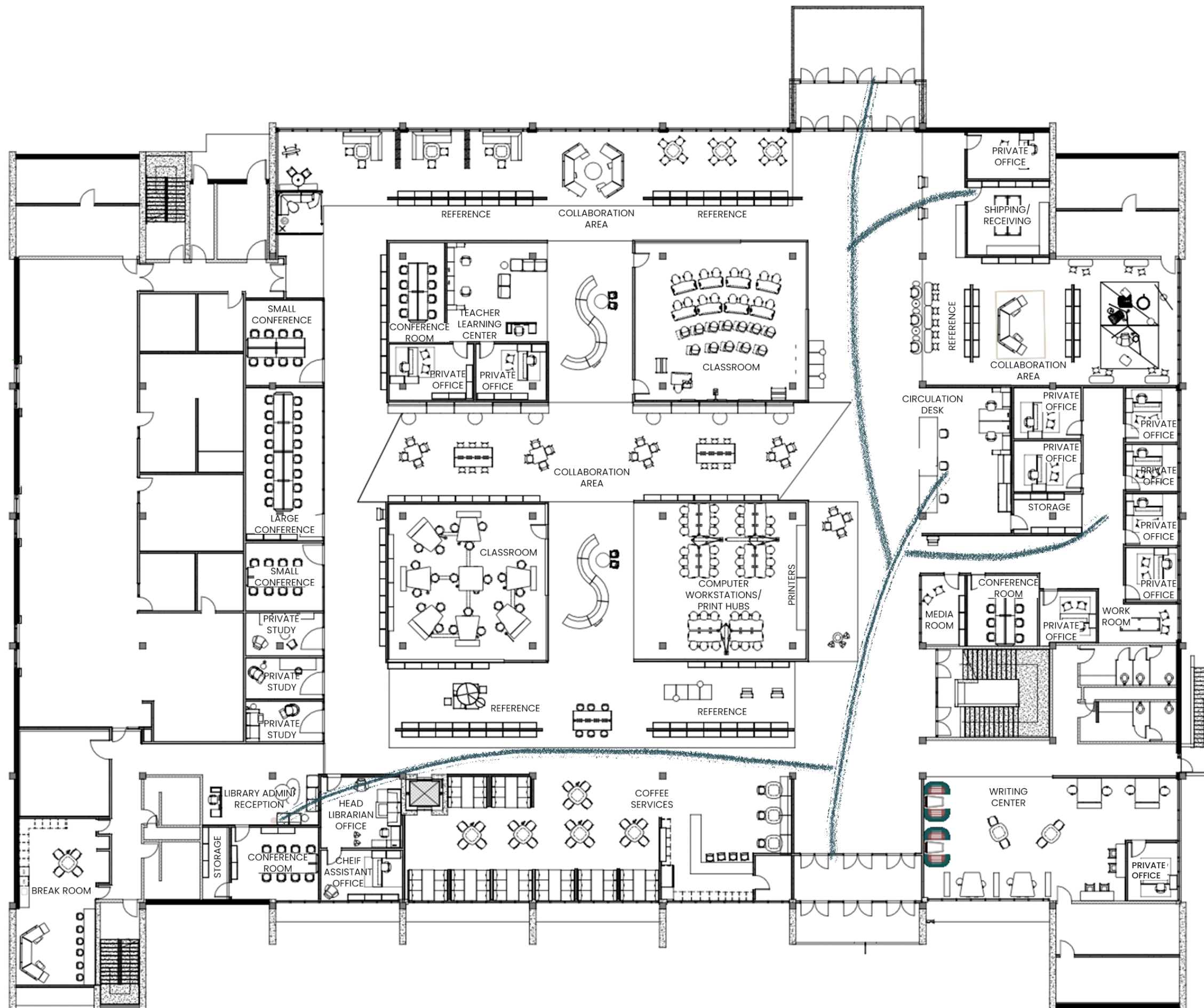








- Students
- Faculty
- Community Members
- Staff

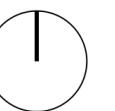
Not To Scale





-  Students
-  Faculty
-  Community Members
-  Staff

Not To Scale



Reflected Ceiling Plan

Eureka Double Flare Ceiling Suspended



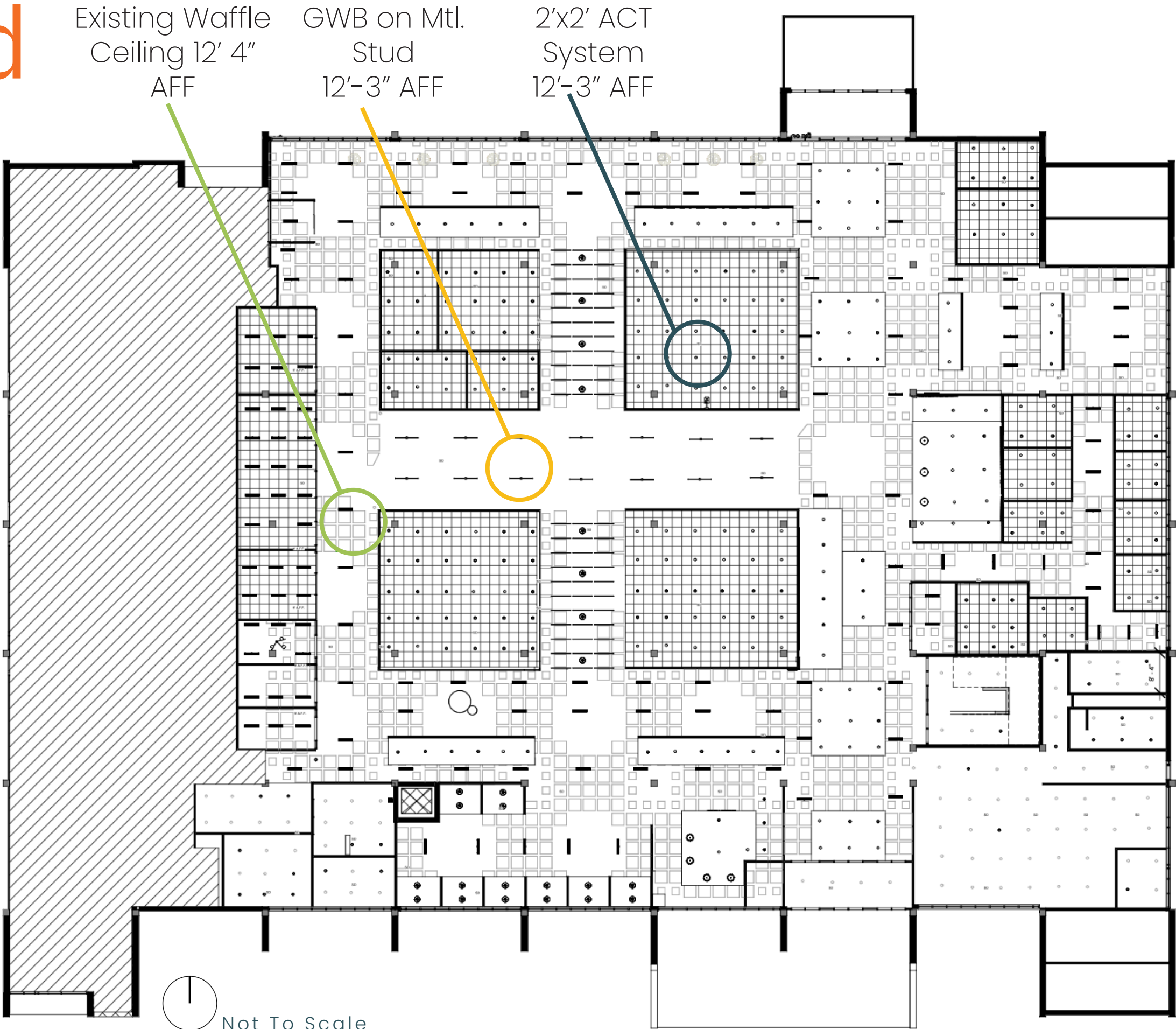
Eureka Verner Ceiling Suspended



Eureka Mute Ceiling Suspended



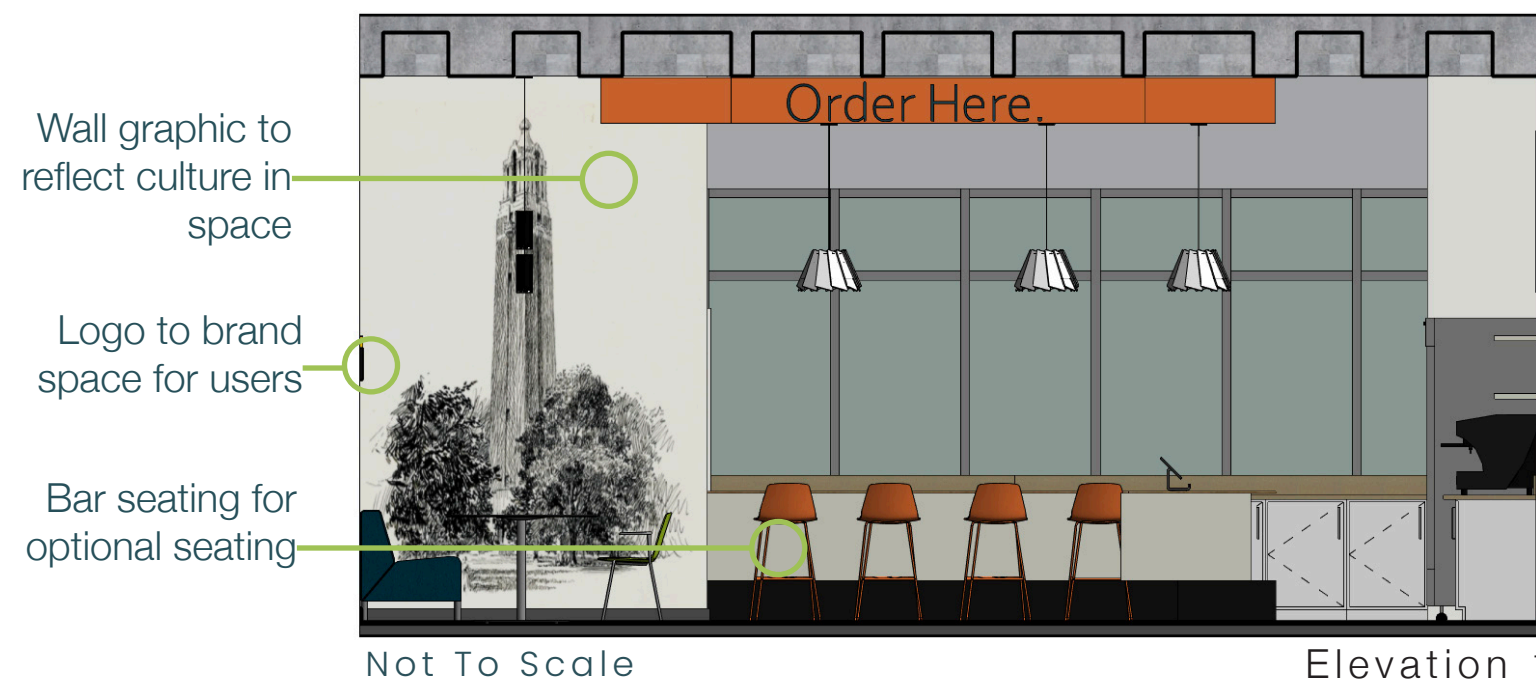
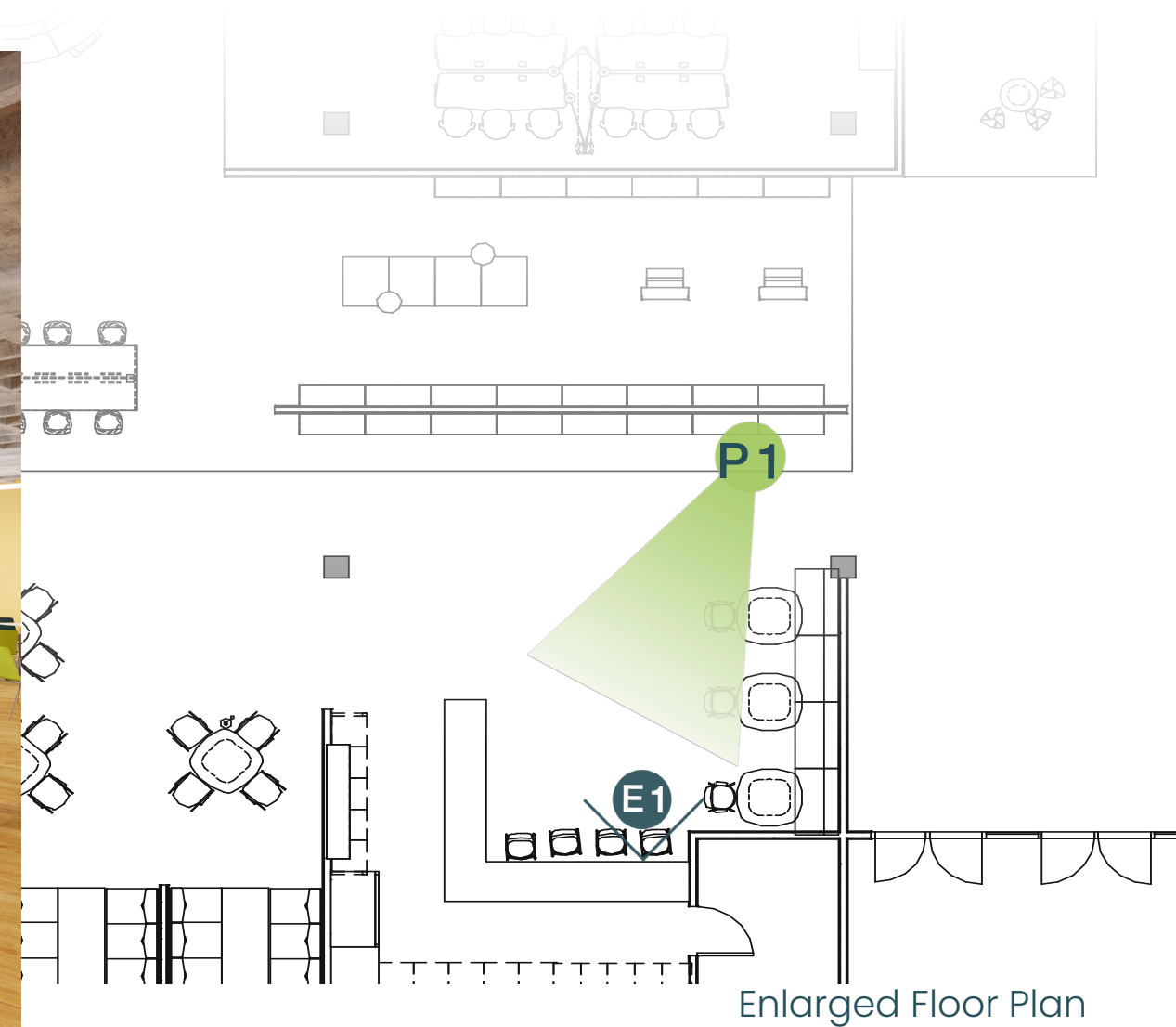
Phillips LED Recessed Light



Coffee Services



Perspective 1



Design Considerations:

- + Lighting control for user comfort.
- + Variety of seating options for user choice.
- + Local artwork on feature wall to reflect culture and location.
- + Orange suspended accoustical ceiling to help with accoustics.
- + Open area to allow for natural light to enter the space and for users to get those views outside as well.



Perspective 1

Materials



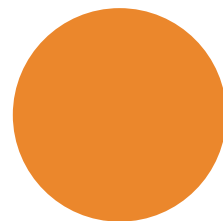
Existing
Concrete



Shaw Flooring
Terrain ii Thatch



Sherwin Williams
High Reflective
White



Sherwin Williams
Carnival

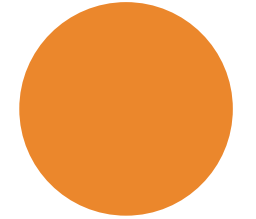


Formica
Butcher block Maple

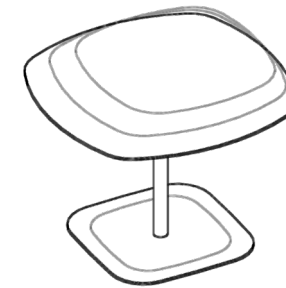
Furniture



Steelcase Coalesse
Enea Lottus Bar Stool



Steelcase
Citron



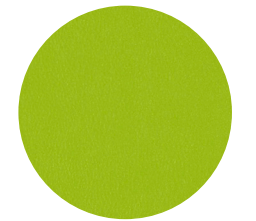
Steelcase Coalesse
Enea Lottus Table



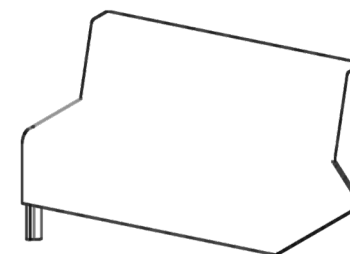
Steelcase Arctic
White



Steelcase Coalesse
Enea Lottus Chair



DesignTex
Silicone Element



Smith Systems
Elemental Moon Table

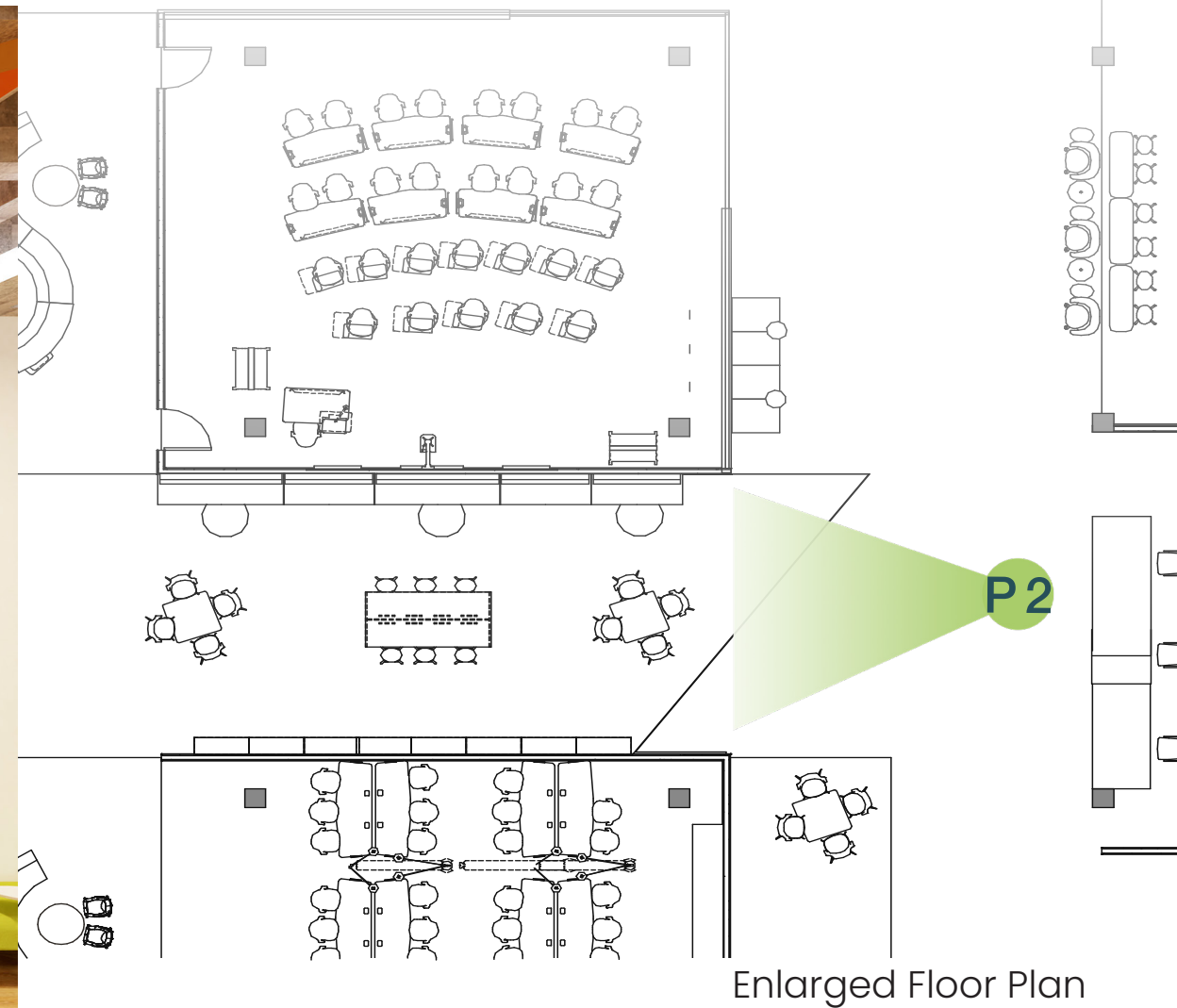


DesignTex Bute
Tiree Peacock

Collaborative Hallway



Perspective 2



Enlarged Floor Plan

Design Considerations:

- + Lighting control for user comfort
- + Extension of flooring within space to provide clear wayfinding.
- + Variety of seating to allow for impromptu collaboration among users.

- + Orange ceiling with orange walls and floors in area to create a focal point within the space.
- + Orange colors to reinforce concept and promote creativity

Collaborative Hallway



Perspective 2

Materials



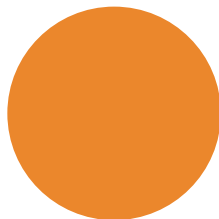
Existing
Concrete



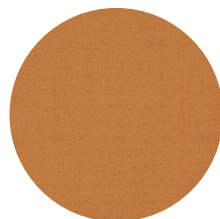
Shaw Flooring
Terrain ii Thatch



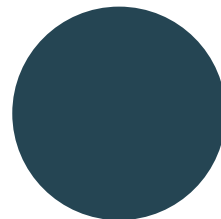
Sherwin Williams
High Reflective
White



Sherwin Williams
Carnival



Shaw Shadows
Orange Carpet

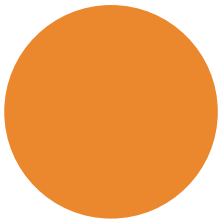


SW 6230
Rainstorm

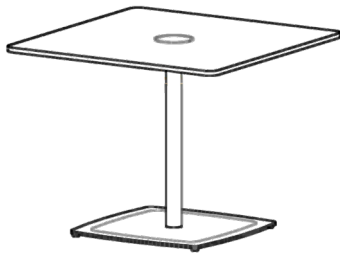
Furniture



Steelcase Node 480
Seating



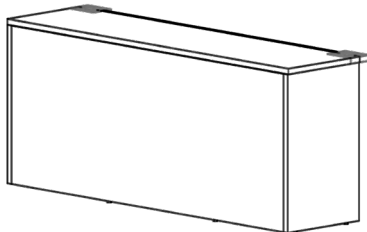
Steelcase
Orange



Steelcase Coalesse
Montara Square Table



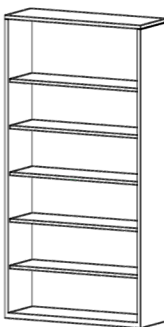
Steelcase Arctic
White



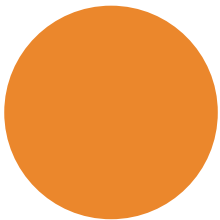
Steelcase Turnstone
Campfire Big Table



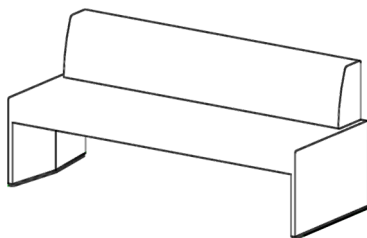
Steelcase Arctic
White



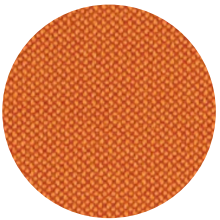
Steelcase Universal
Storage Bookcase



Steelcase
Orange



Steelcase Coalesse
Together Bench



DesignTex Rocket
Carotene

Library Services

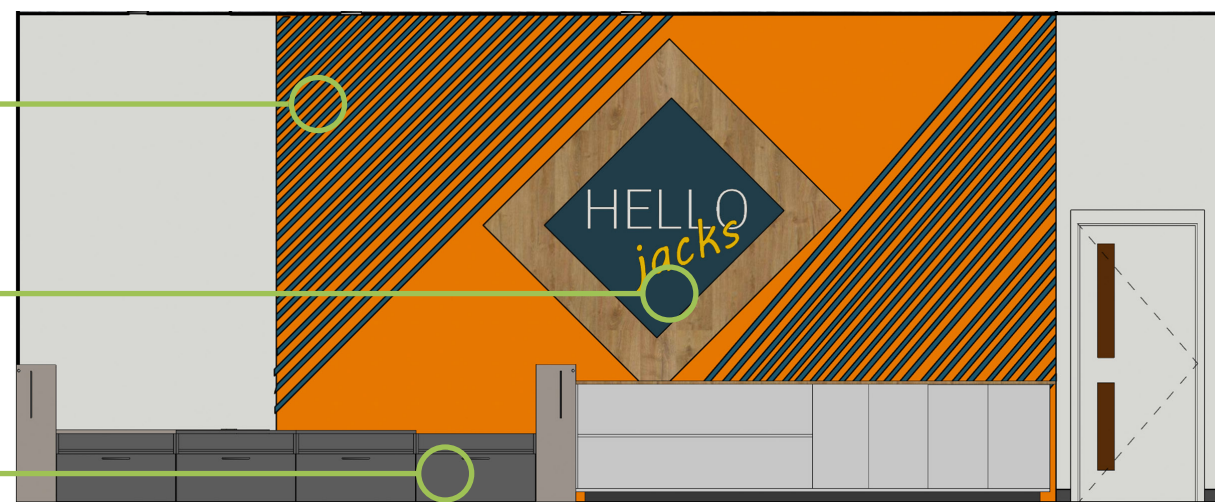


Perspective 3

Orange wall to relate to concept and promote wellness

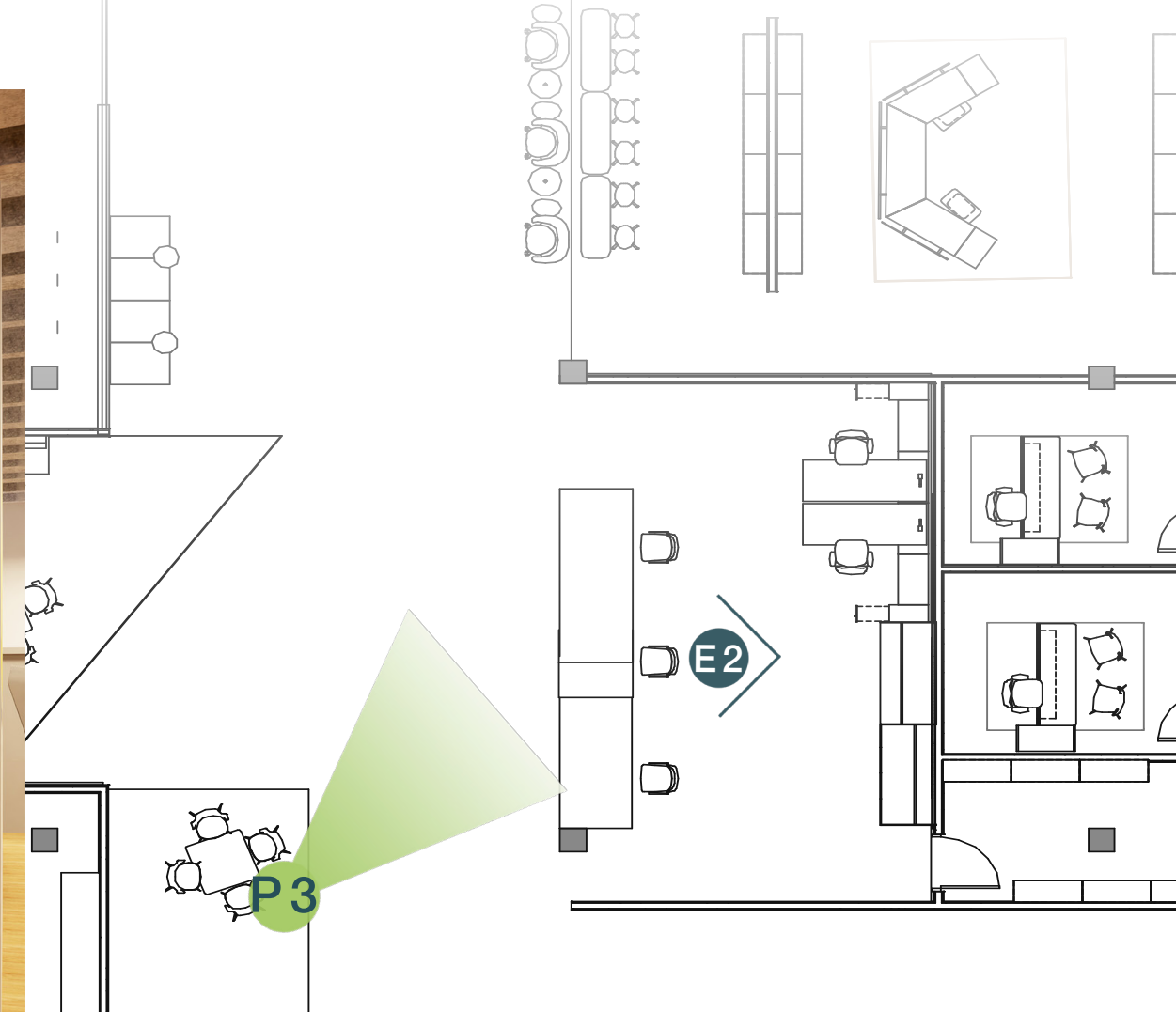
Signage to draw users in

Abundance of storage for workers



Not To Scale

Elevation 2



Enlarged Floor Plan

Design Considerations:

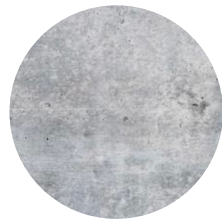
- + Reception desk within center of space to provide clear wayfinding.
- + Local natural materials such as wood and concrete are used.
- + Height adjustable reception desk.
- + Orange ceiling and wall in area to create a focal point within the space.
- + Signage used to help users with wayfinding in the space

Library Services



Perspective 3

Materials



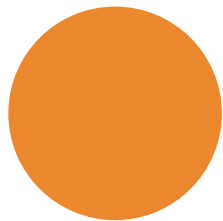
Existing
Concrete



Shaw Flooring
Terrain ii Thatch



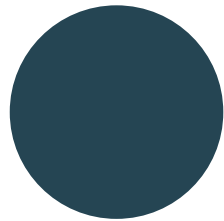
Sherwin Williams
High Reflective
White



Sherwin Williams
Carnival

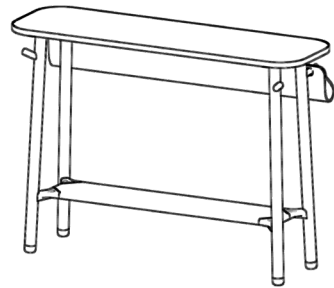


SW 6921 Electric
Lime



SW 6230
Rainstorm

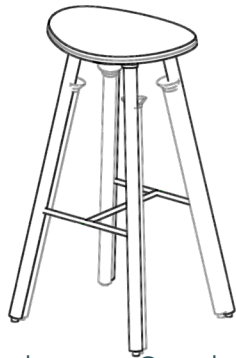
Furniture



Steelcase Flex Slim
Table



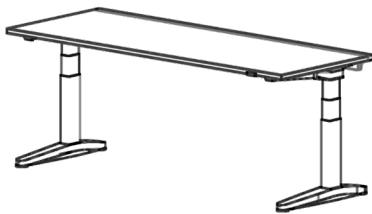
Steelcase Arctic
White



Steelcase Coalesce
Enea Cafe Stool



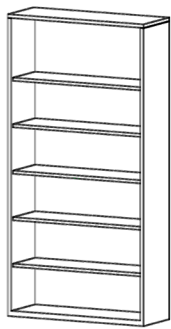
DesignTex Felt
2mm Lime



Steelcase Ology
Electric Desk



Steelcase Arctic
White



Steelcase Universal
Storage Bookcase



Steelcase Arctic
White



Steelcase QiVi 428
Collaborative Seating

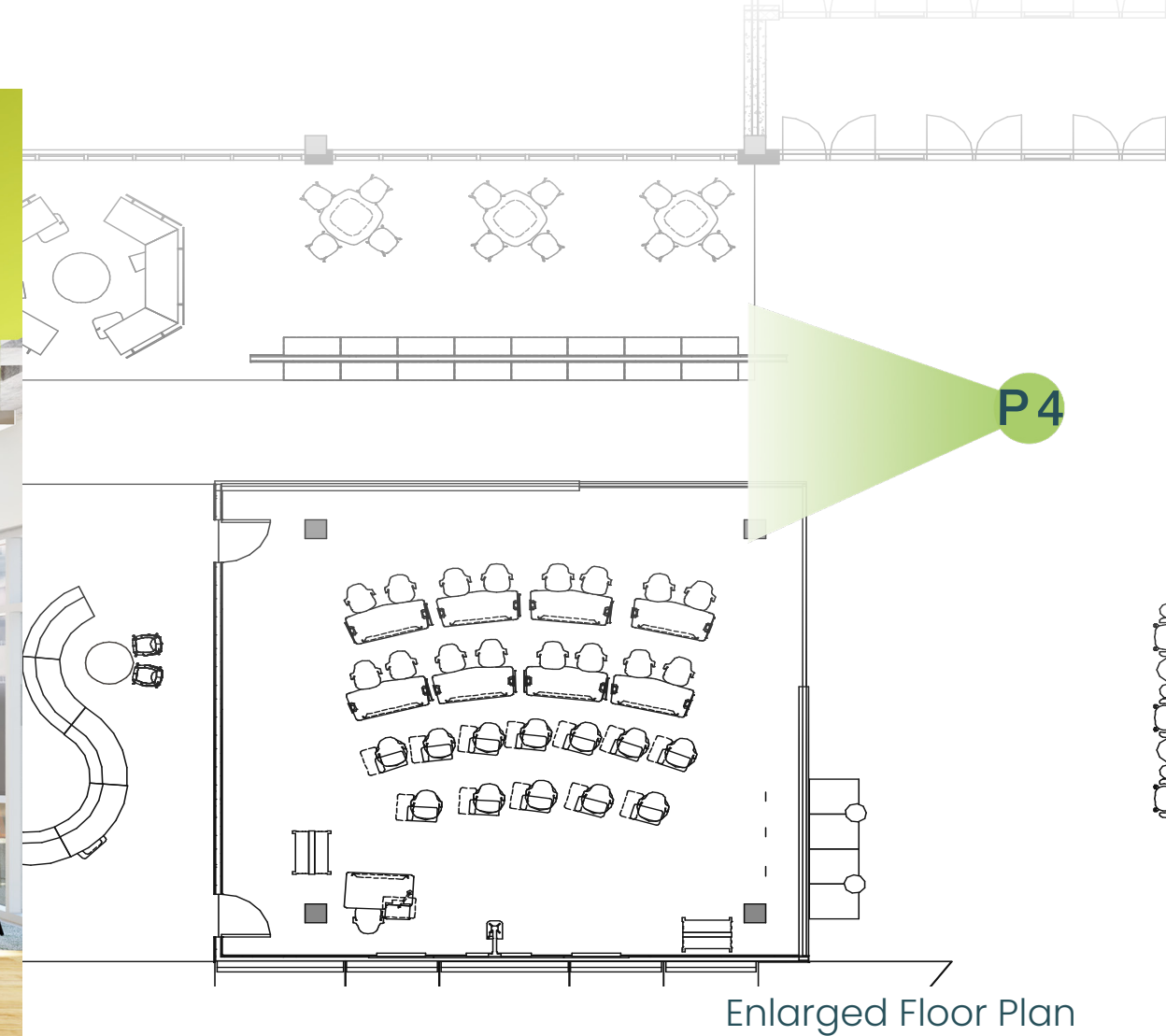


Steelcase Lime
Green

Classroom Hallway



Perspective 4



Enlarged Floor Plan

Design Considerations:

- + Open area to allow for natural light to enter the space for users to get those views outside.
- + Angled glass walls on classroom to provide optimal amounts of natural light through the space and have the connection to the hallway.

- + Blue awning above the bookcase to create a space within a space and to create a focal point.
- + Carpet chosen for accoustical reasons and the color was selected to reflect the wood in the main entry to create a seamless design between the two spaces.

Classroom Hallway



Perspective 4

Materials



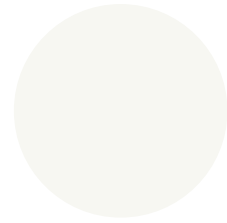
Existing Concrete



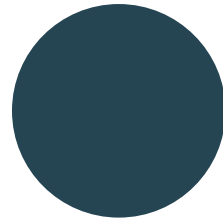
Shaw Flooring
Terrain ii Thatch



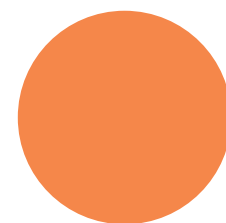
Shaw Haven Ivy



Sherwin Williams
High Reflective
White



Sherwin Williams
Rainstorm



3 form Mai Tai
020



Zintra Acoustic
1/2" Panel Grass

Furniture



Steelcase Node 480
Seating



Sherwin Williams
Carnival, Electric Lime &
Confident Yellow



Steelcase Coalesse
Montara Square Table



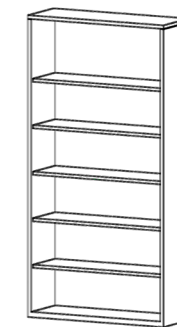
Steelcase Arctic
White



Steelcase Turnstone
Campfire Big Table



Steelcase Lime
Green



Steelcase Universal
Storage Bookcase



Steelcase Arctic
White



Steelcase Coalesse
Together Bench

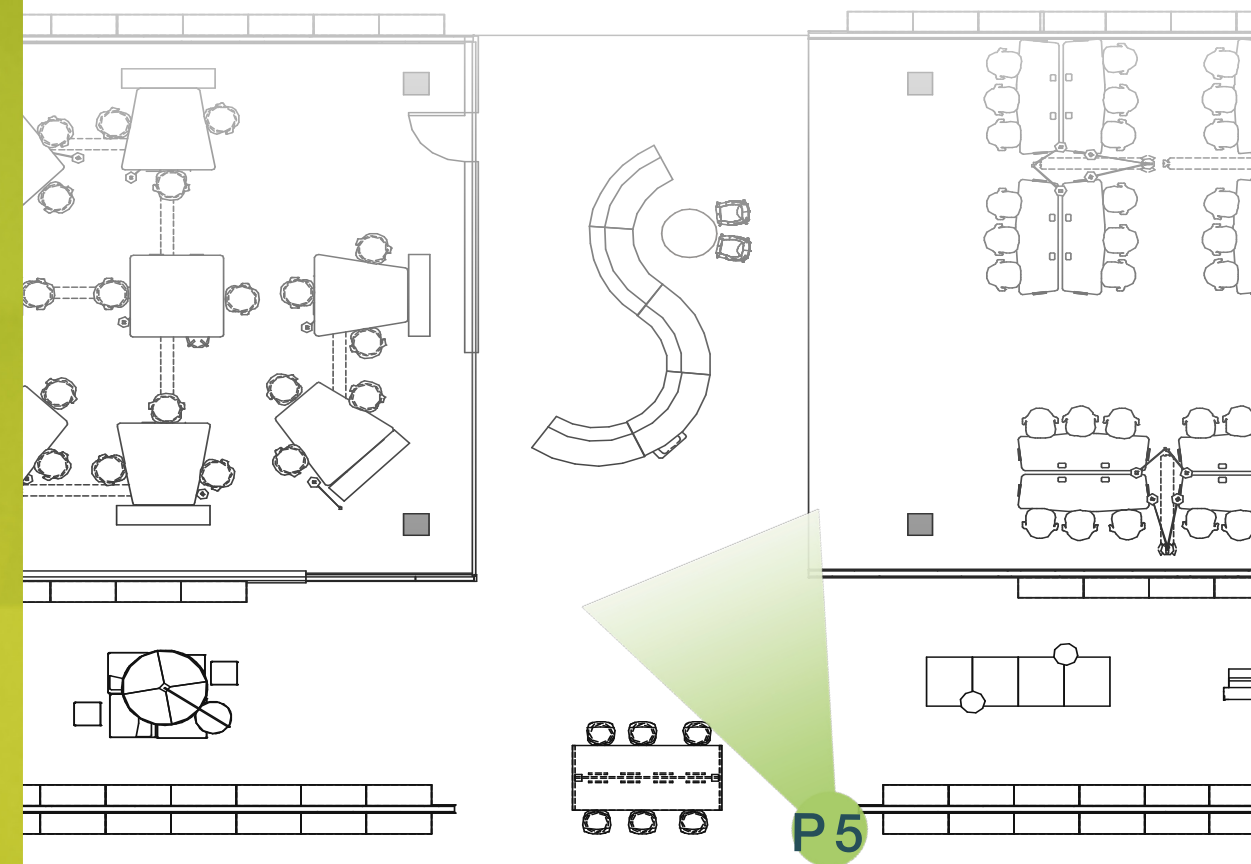


Steelcase Arctic
White

Lounge Area



Perspective 5



Enlarged Floor Plan

Design Considerations:

- + Big Campfire Table to create an area where users can easily come to and collaborate.
- + Angled glass walls on classroom to provide optimal amounts of natural light through the space and have the connection to the hallway.

- + Suspended acoustical ceiling baffles to help with acoustics.
- + Carpet chosen for acoustical reasons and the color was selected to reflect the concept to create a seamless design.

Lounge Area

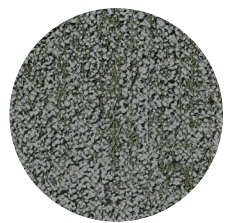


Perspective 5

Materials



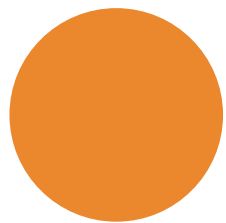
Existing
Concrete



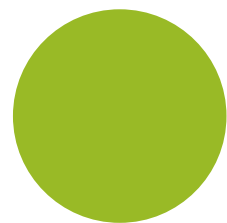
Shaw Haven Ivy



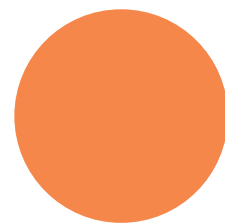
Sherwin Williams
High Reflective
White



Sherwin Williams
Carnival

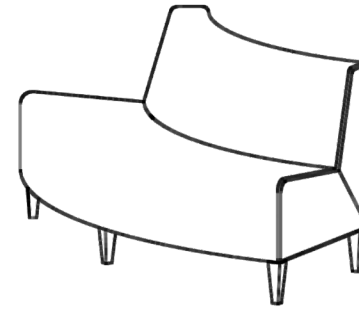


Sherwin Williams
Electric Lime

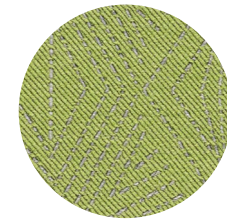


3 form Mai Tai
020

Furniture



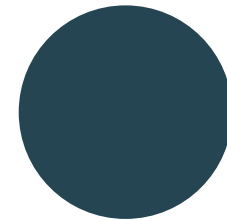
Steelcase Coalesse
Circa Wedge Loveseat



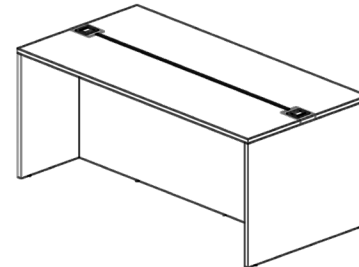
Designtex
Starburst
Green



Steelcase Coalesse
Enea Lottus Stool



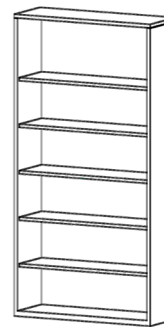
Sherwin Williams
Rainstorm



Steelcase Turnstone
Campfire Big Table



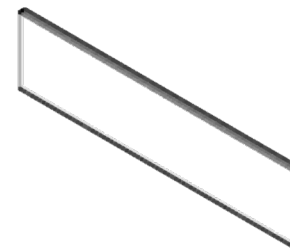
Steelcase Arctic
White



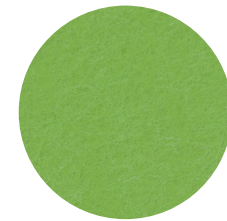
Steelcase Universal
Storage Bookcase



Steelcase Arctic
White



Kirei USA-I-Baffle

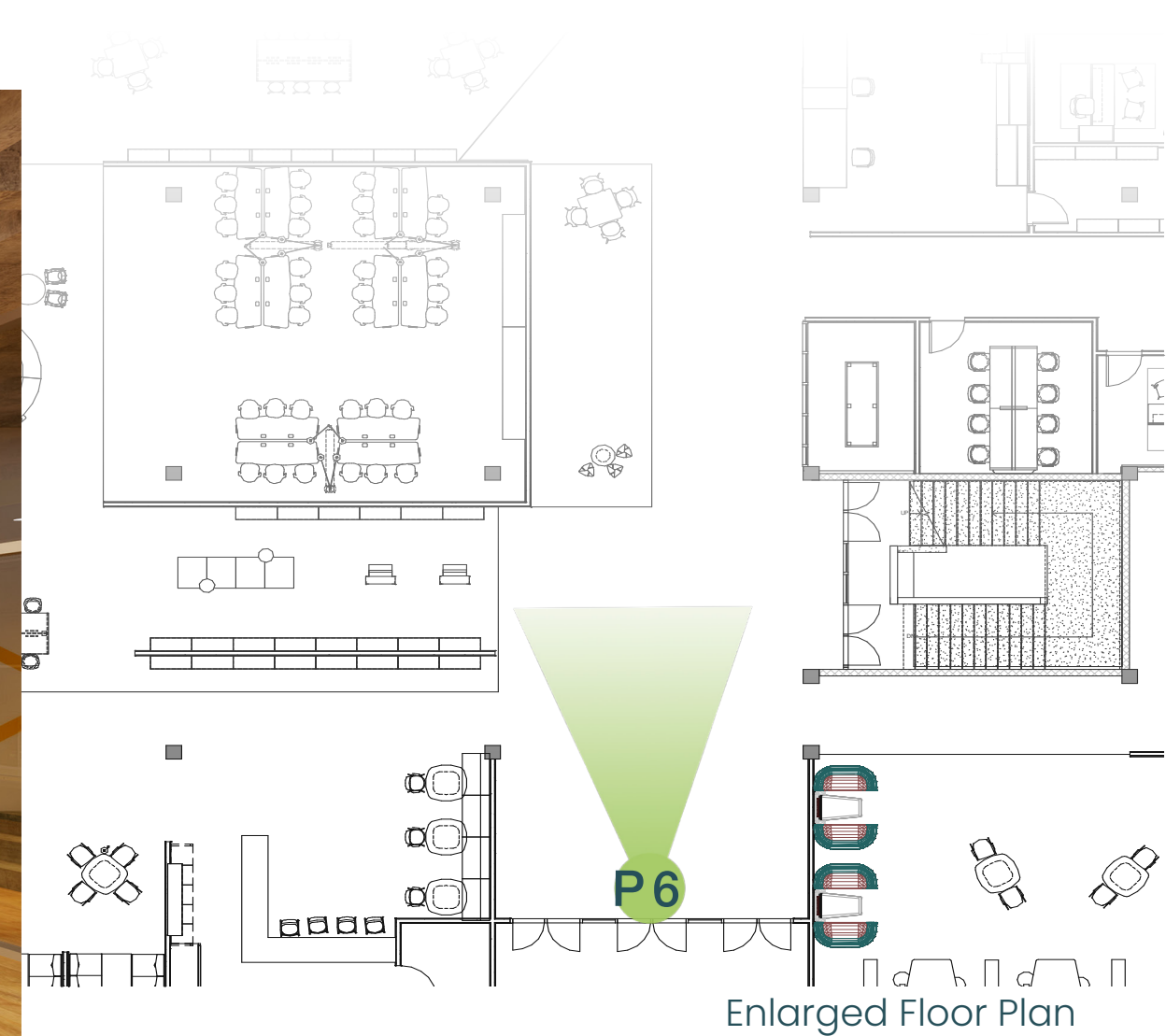


Kirei Green 362

South Entrance



Perspective 6



Design Considerations:

- + Exposed ceiling with green acoustical detail drop downs through entry to lead people through the space.
- + Blue awning above the interactive wall map to create a space within a space.

- + Local natural materials such as wood and concrete are used.
- + Open concept to allow for easy collaboration among employees and users.



Perspective 6

Materials



Existing Concrete



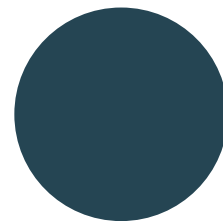
Shaw Flooring
Terrain ii Thatch



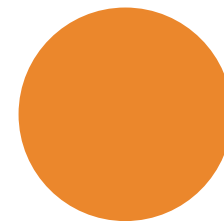
Shaw Shadows
Highlight Carpet



Sherwin Williams
High Reflective
White



Sherwin Williams
Rainstorm



Sherwin Williams
Carnival

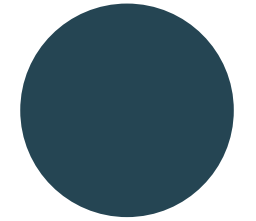


Zintra Acoustic
1/2" Panel Grass

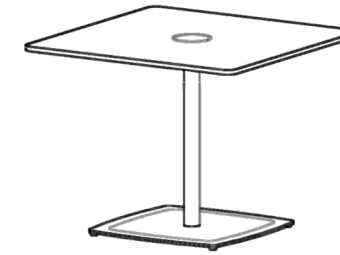
Furniture



Steelcase Node 480
Seating



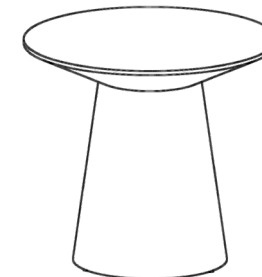
Steelcase
Baltic



Steelcase Coalesse
Montara Square Table



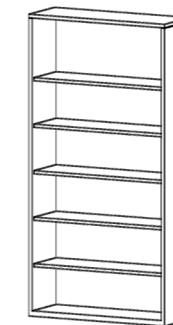
Steelcase Arctic
White



Steelcase Turnstone
Campfire Big Table



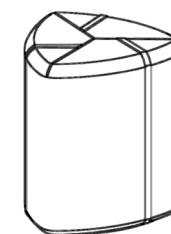
Steelcase Arctic
White



Steelcase Universal
Storage Bookcase



Steelcase Arctic
White



Steelcase Coalesse
Together Bench



DesignTex
Mountainious
Pencil

Thank You!

Questions?

