



PROJECT OVERVIEW

To think creatively and intentionally to combine the sensitive structure of a social issue with the practice of healthcare design. As part of the research, you should select a specific North American location for your facility, uncover the needs of that community, and design a space that facilitates the targeting of those needs through the design process.

The design of this facility should promote and allow the doctors, dentists, healthcare professionals. and staff to increase efficiency and create a seamless patient experience through thoughtful site planning.

3,000 sq. ft. total

TPOLOGY: A Marijuana Addiction Rehab Center for Teen Girls Ages 13-19

PROJECT LOCATION: Boulder, Colorado



P R O G R A M H I G H L I G H T S

Attachment styles

Codependency

Gender-specific treatment

Relapse prevention

Drug addiction continuing education

Relationships

Cognitive behavior therapy

Outside community 12-step meetings

Life skills

Stress management techniques

“

Choice House, located in Boulder, Colorado helps men struggling with substance abuse and co-occurring mental health issues **find a life full of meaning and purpose** through **honesty, integrity, and willingness**.

”

F A C T S

- 01 Marijuana is a mixture of dried leaves and flowers from the cannabis sativa and cannabis indica plants.
- 02 There are about 500 chemicals in the marijuana plant, one of which is a mind-altering chemical called tetrahydrocannabinol (THC), which makes one feel "high." It also produces cannabidiol (CBD), which is non-psychoactive.
- 03 "Feeling high, slowed reaction time and hand/eye coordination, distorted perceptions of time and distance, paranoia, faster heart rate, increased blood pressure, increased appetite, dry mouth, red eyes, difficulty thinking and problem-solving, decreased motivation and feeling tired are all short-term effects". (High Costs 2021)
- 04 Around 35% of all 12th graders in the U.S. have smoked pot at some point in the past year.
- 05 Many teens are looking for an escape from everyday problems. As a result, they may turn to marijuana to help deal with painful emotions and cope with mental illness.

STATISTICS

STATISTICS

STATISTICS

22.6%

Colorado was in the top three highest rates of use for minors. The highest rates of use for minors in Colorado, Boulder was 22.6 percent and trending above.

T R E A T M E N T

Treatment for marijuana typically happens over a period of **3-12 months** based on the needs of each individual. The user may need to go through a detoxification process. **Detoxification can be from 1-7 days.** There is typically no counseling or groups during the detox as the purpose of **detox is to get the patient medically stabilized** and prepared to be able to participate in treatment processes.

After social detox, **the recovering person will enter the residential marijuana treatment.** Clients uder go **assessments by professional counselors and physicians** and **participate in group and individual counseling sessions.** Many clients continue to experience post-acute withdrawal symptoms in residential marijuana treatment and those **symptoms are closely monitored and treated by a team of clinical professionals.**



BOULDER, CO

40.0150° N, 105.2705° W

Area: 27.36 mi²

Population: 106,392

Elevation: 5,328'

Climate: Continental

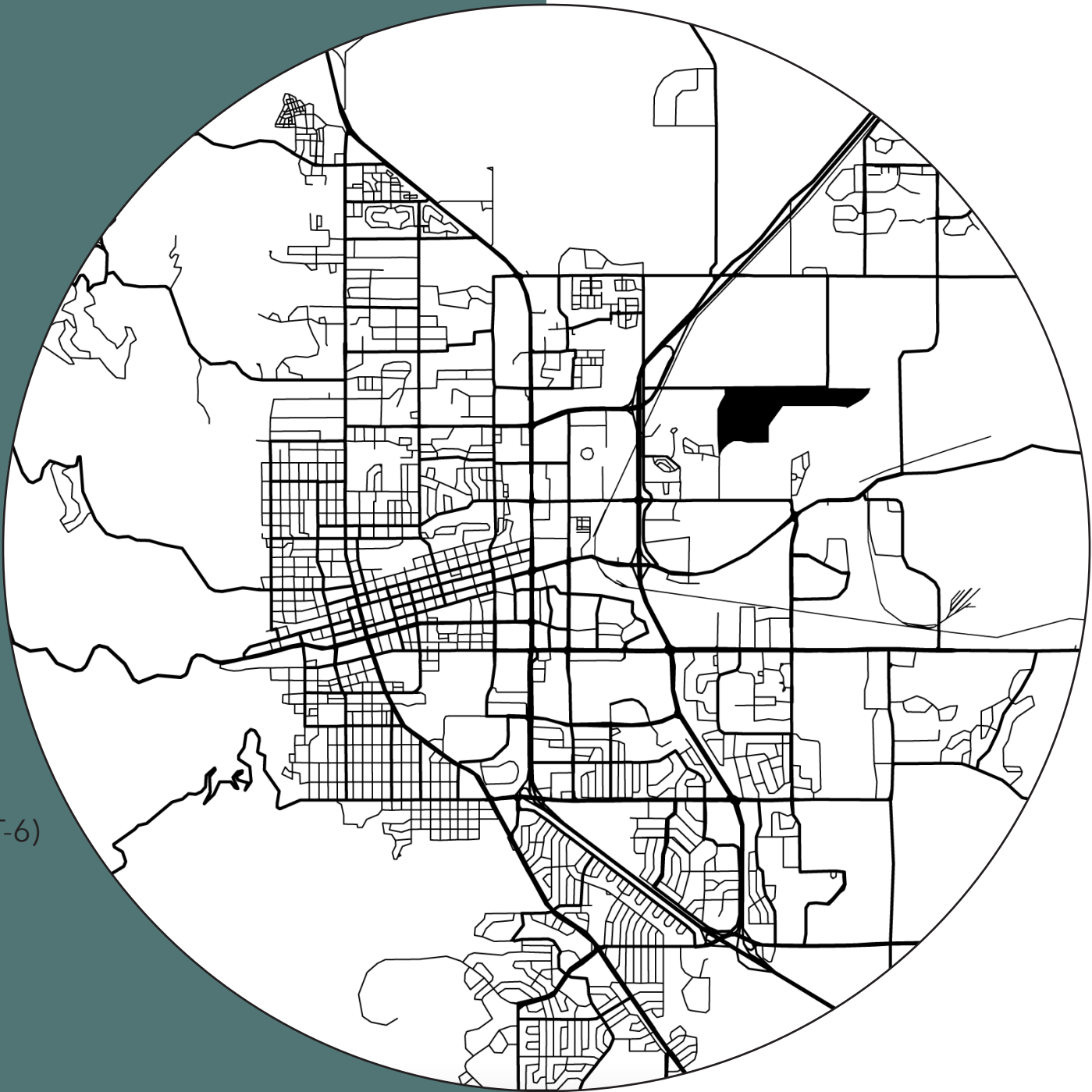
Established: 1871

Demonym: Boulderites

Language: English

Time Zone: Mountain Daylight Time (GMT-6)

Postal Code: 80301-80329



1739 BROADWAY

Boulder, CO 80302



Northern orientation of the window is most preferable for relying on natural light as morning sunlight can be too bright from an easterly direction. A southern orientation is good especially during the winter months and western orientation cannot be relied upon.

COLOR THEORY

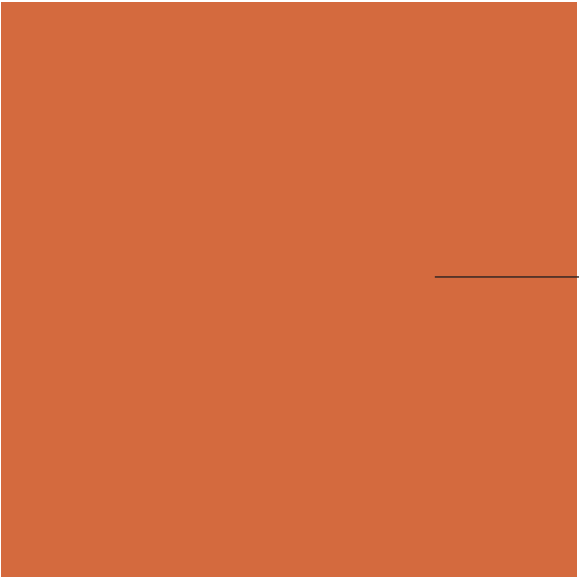
PANTONE P 175-7 C

Loyalty, trustworthy,
calm



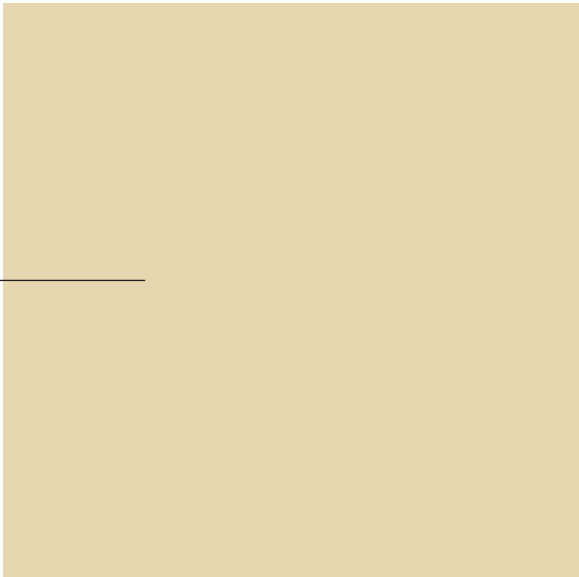
PANTONE P 36-4 C

Joyful, energy,
vitality



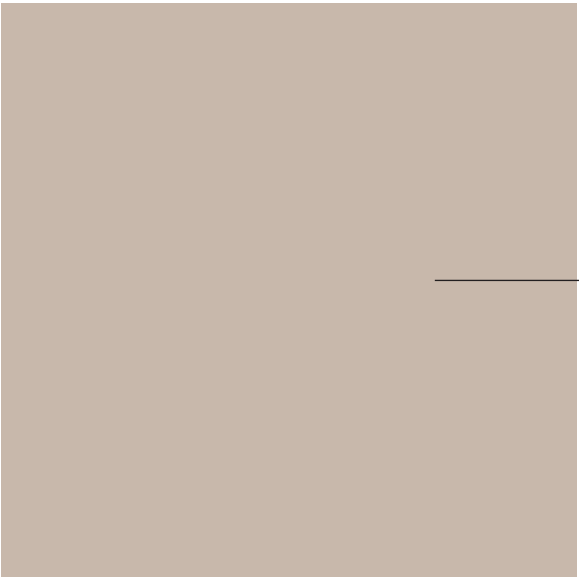
PANTONE P 2-9 C

Happiness, hope,
courage



PANTONE P 72-6 C

Love, kindness,
refreshing



FONT PALETTE

Title Font
GOPHER

Body Text
Avenir Next

BRANDING



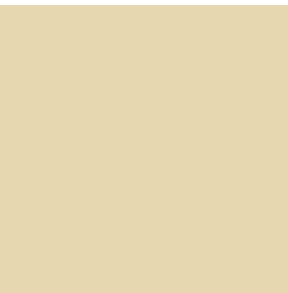
COLOR PALETTE



PANTONE P 175-7 C



PANTONE P 36-4 C



PANTONE P 9-1 C

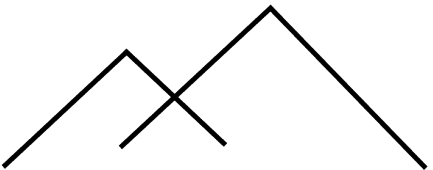


PANTONE P 72-6 C

PRIMARY LOGO



SECONDARY LOGO



revive

re·vive
verb

: to return to consciousness or life : become active or flourishing again



GOALS + OBJECTIVES

01

Provide a gender-specific residential care space for the users.

Providing an environment where girls can feel safe to improve therapeutic engagement and treatment outcomes.

Help address the specific needs of women and help them overcome the challenges they face in recovery.

Fewer distractions in gender-specific treatment.

02

Allow girls to reside in a safe, supportive environment for recovery.

Make residents feel comfortable with the treatment center being cozy, welcoming and warm.

Help the girls find new meaning in their lives and regain the health, confidence and drive they'll need to thrive in recovery.

Outdoor adventure therapy that helps clients rediscover a sense of self, strength and well-being as they heal through nature.

03

Give clients an opportunity to stabilize and acclimate themselves to a new lifestyle.

Surrounded by a compassionate team of addiction experts and like-minded peers who are also trying to get sober.

Give girls the opportunity to truly focus on their recovery and begin the healing process in a safe, supportive place.

Joining the small group of clients for treatment includes evidence-based therapies, life-skills training, holistic support and nutritious meal planning.

FIRST FLOOR




LEVEL 1 FLOOR PLAN | not to scale

LEVEL 1

- 101 entry
- 102 dining
- 103 kitchen
- 104 vestibule
- 105 elevator
- 106 stairs
- 107 storage
- 108 restroom
- 109 office
- 110 conference/meeting room



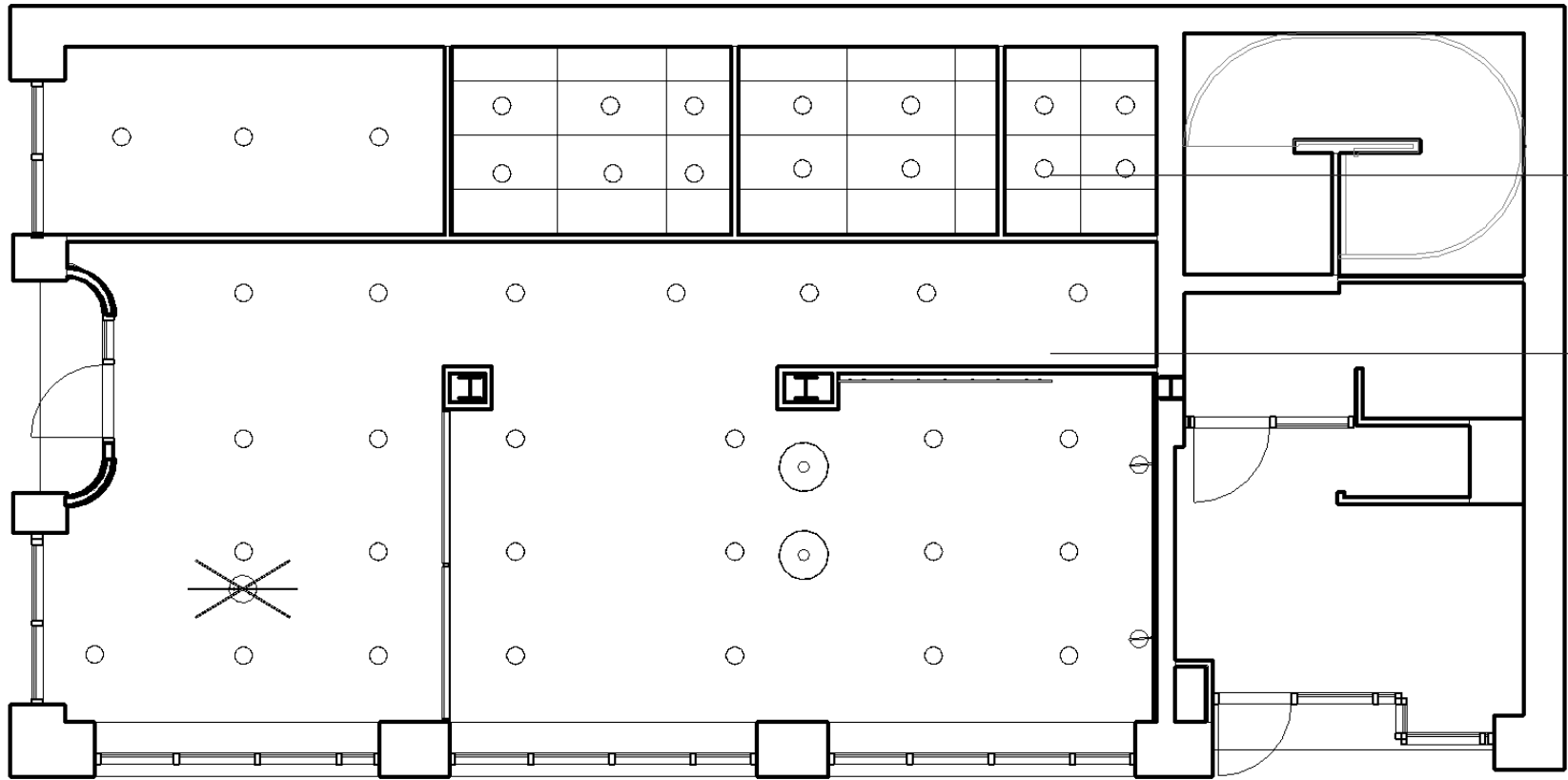
ASPHALT GRAY
ARMSTRONG



LVT
SHAW



TWISTED SPOKES TEAL
FLOR



LEVEL 1 RCP | not to scale

2' X 4' ACT System
13' - 2" A.F.F.

GWB on Mtl. Stud
13' - 2" A.F.F.

SECOND FLOOR



LEVEL 2 FLOOR PLAN | not to scale

EXISTING EMERGENCY EXIT

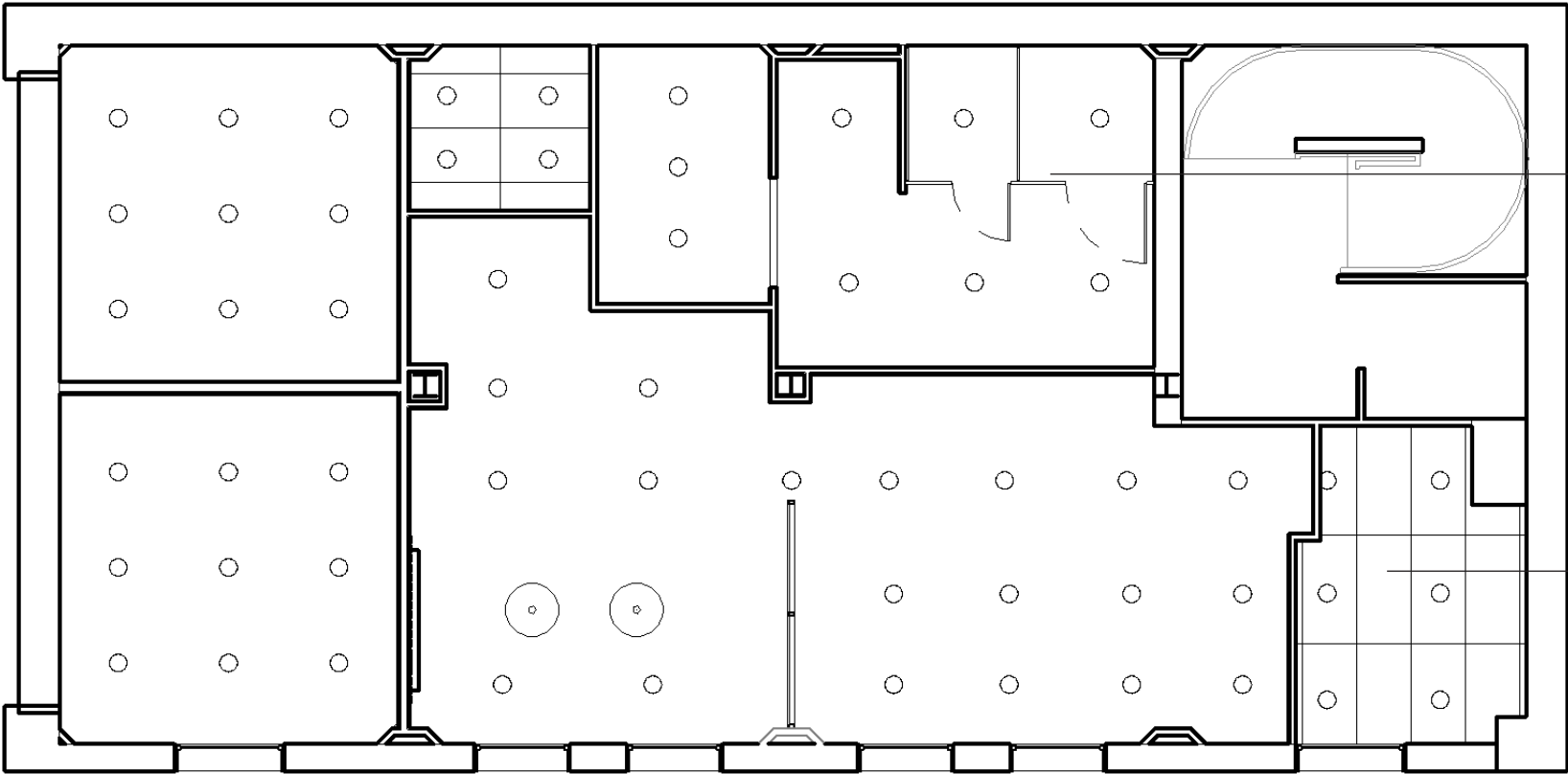
LEVEL 2

- 201 bedroom 1
- 202 study space
- 203 living room
- 204 breakroom
- 205 elevator
- 206 stairs
- 207 restroom + showers
- 208 storage
- 209 bedroom 2

ASPHALT GRAY
ARMSTRONG

LVT
SHAW

HEMLINE PEARL
FLOR



LEVEL 2 RCP | not to scale

GWB on Mtl. Stud
11' - 0" A.F.F.

2' X 4' ACT System
11' - 0" A.F.F.





KITCHEN



KITCHEN ELEVATION

NOT TO SCALE

SECURITY

1. Video cameras should be used in all common areas so that staff is aware of patient activities and any possible breach of the contract.
2. The employees will have either a key card access sensor or a code to enter the building.
3. Locking systems and security devices that make it difficult to enter and leave without being seen.
4. Security guards + staff to help keep order and help patients feel safe in case there should be any arguments or fights in the facility.

DESIGN CONSIDERATIONS

1. All materials selected are bleach cleanable, antimicrobial, and durable. Indigo lighting will be applied to sterilize and maintain cleanliness.
2. Incorporating tactile textures, materials and accessories that evoke a sense of warmth and comfort.
3. Copper embedded surfaces, photoactive pigments, bleach cleanable materials to protect against the spread of infection.
4. Re-branding to tie back to user being the center of design and eliminating bias.
5. The use of brick to connect The Choice House to downtown Boulder and bring in the warmth.

GOALS + OBJECTIVES

1. Help the girls find new meaning in their lives and regain the health, confidence and drive they'll need to thrive in recovery.
2. Make residents feel comfortable with the treatment center being cozy, welcoming and warm.
3. Providing an environment where girls can feel safe to improve therapeutic engagement and treatment outcomes.



LOUNGE AREA



SECURITY

1. Video cameras should be used in all common areas so that staff is aware of patient activities and any possible breach of the contract.
2. The employees will have either a key card access sensor or a code to enter the building.
3. Locking systems and security devices that make it difficult to enter and leave without being seen.
4. Security system that prevents any substances from entering the program.

DESIGN CONSIDERATIONS

1. All materials selected are bleach cleanable, antimicrobial, and durable. Indigo lighting will be applied to sterilize and maintain cleanliness.
2. Designing with light wood tones, warm led lamps, and contrasting elements, the space begins to replicate a warm, comfortable, familiar space for users.
3. Copper embedded surfaces, photoactive pigments, bleach cleanable materials to protect against the spread of infection.
4. Keeping seating a safe distance apart and offering various ergonomic options; keeping bariatrics in mind.
5. The lounge areas and bedrooms are placed upstairs to provide more privacy and security.

GOALS + OBJECTIVES

1. Help the girls find new meaning in their lives and regain the health, confidence and drive they'll need to thrive in recovery.
2. Make residents feel comfortable with the treatment center being cozy, welcoming and warm.
3. Help address the specific needs of women and help them overcome the challenges they face in recovery.

MATERIALS

LVT offers the warm, welcoming aesthetic of wood but offers the durability of vinyl. Installing the floor in ashlar pattern softens the look of the space. Choosing various wood tones build depth within the design and creates a unique look. Using the combination of teal tile and frosted glass paneling finds a balance with materials relating back to the history of Boulder and being a progressive rehab center. Acoustical ceiling tile will be installed in more private areas for extra acoustical value. Adding a wall of teal brick creates a cohesive design and connects the two floors while relating to downtown Boulder. Mecho shades are used to filter natural daylight when appropriate.

Upholstery chosen was selected within the context of meeting healthcare standards: nfpa 260, wyzenbeek 60,000 +, act requirements, healthier hospitals initiative compliant etc. Seamlessly combining textures offers a more home-like atmosphere. The colors teal, orange and pink with neutral colors allow for the individuals to feel courage, loyalty and calmness in the space. The textures of the materials give nod to nature and to downtown Boulder.



Thank You!

Questions?



APPENDIX

WALL FINISH SCHEDULE

Wall Finish Schedule								
	Manufacturer and Model	Material Type	Style and Collection	Size	Performance	Environmental	Color and Finish	Location
Kitchen	Fire Clay	Tile	Variation 2	3" x 9"	Recycled Materials	Zero waste	Flagstone	Kitchen Wall
	Armstrong	Wood Veneered Planks	Woodworks	5 1/4" x 96'	100% Biobased content	92% recycled content	Natural Variations Beech	Kitchen Wall
	Sherwin Williams	Emerald Interior Latex Satin K3 Series	9166 Drift of Mist	N/A	Anti-Microbial, Premium Performance, Low VOC		Gray	Kitchen Wall
	Sherwin Williams	Emerald Interior Latex Satin K3 Series	2810 Rookwood Sash Green	N/A	Anti-Microbial, Premium Performance, Low VOC		Blue	Hallway
	Concertex	Wallcovering	Fast Track Shield	50"/51"	100% Phthalate Free Vinyl	Phthalates Free, Complies with California Section 013	Canvas	Hallway
Lounge Area	Fire Clay	Tile	Variation 2	3" x 9"	Recycled Materials	Zero waste	Flagstone	Lounge
	Sherwin Williams	Emerald Interior Latex Satin K3 Series	9166 Drift of Mist	N/A	Anti-Microbial, Premium Performance, Low VOC		Gray	Lounge
	Sherwin Williams	Emerald Interior Latex Satin K3 Series	6892 Carnival	N/A	Anti-Microbial, Premium Performance, Low VOC		Orange	Lounge

FLOORING SCHEDULE

	Manufacturer and Model	Material Type	Style and Collection	Flooring Schedule		Environmental	Color and Finish	Location
				Size	Performance			
Kitchen	Shaw Contract	LVT	0453V Terrain II 12 Mil	6 in x 48 in	Wear Layer " 12 mil	Made in the USA	Thatch 00173	Kitchen + Dining + Hallway
Upstairs Lounge Area	Shaw Contract	LVT	0453V Terrain II 12 Mil	6 in x 48 in	Wear Layer " 12 mil	Made in the USA	Thatch 00173	Lounge Area
	Flor	Carpet Tile	Hemline	8' x 10'	Free of harmful chemicals and low on VOCs	Made in the USA	Pearl	Lounge + Study Area Rugs

MATERIAL SCHEDULE

Material Schedule								
	Manufacturer and Model	Material Type	Model Type Series	Size	Performance	Environmental	Color and Finish	Location
Kitchen	Knoll	100% Polyester	Instinct in Blush	55"	100,000 Wyzenbeek	Reduced Environmental Impact	Blush	Dining Chairs Cushion
	Brad Hedges	Terrazzo	N/A	N/A	Greenguard Gold Certification	No VOCs During or After Installation	TM #18-3068	Countertops
	Concertex	Wallcovering	Fast Track Shield	55"	Type II Vinyl	Phthalates Free, Complies with California Section 01350	Canvas	Hallway
Upstairs Lounge Area	Knoll	100% Polyester	Instinct in Blush	55"	100,000 Wyzenbeek	Reduced Environmental Impact	Blush	Hightop Chairs
	Carnegie	100% Polyester	Petal 6504	55"	No wear 100,000 double rubs	Ships Carbon Neutral	6504 1	Couch Pillows
	DesignTex	100% Polyester	Bute Storr 3806-101	54"	85,000 Wyzenbeek, Stain Repellant, Woven Polyester	Ships Carbon Neutral	Crème	Poufs
	DesignTex	100% Polyester	Distressed Texture 3935-701	54"	85,000 Wyzenbeek, Stain Repellant, Woven Polyester	Ships Carbon Neutral	Spice	Couch
	DesignTex	100% Polyester	Mountainous 3034-701	54"	85,000 Wyzenbeek, Stain Repellant, Woven Polyester	Ships Carbon Neutral	Orange	Side Chairs

LIGHTING SCHEDULE

Lighting Fixture Schedule										
	Manufacturer and Model	Fixture Type	Lighting Type	Quantity	OmniClass Title	Color Temperature	Lamp	Volt/Wattage	Overall Dimensions	Finish
Kitchen	Flos Lighting IC Light	Wall Mount	Decorative	4	Luminaires for Internal Lighting	3000K	Halogen	60W	15"W x 12.4"H	Metal and Glass
	Tech Lighting Lotus Round 5	Ceiling Flush	General	11	Diffused Downlight	3000K	LED	10W	4.6"W x 0.7"H	Metal
	Tech Lighting Prilo Pendant	Ceiling Suspended	Decorative	2	Luminaires for Internal Lighting	3000K	LED	5W	22"W x 1.5"H	Matte Black
Upstairs Loung Area	Flos Lighting IC Light	Wall Mount	Decorative	4	Luminaires for Internal Lighting	3000K	Halogen	60W	15"W x 12.4"H	Metal and Glass
	Tech Lighting Lotus Round 5	Ceiling Flush	General	11	Diffused Downlight	3000K	LED	10W	4.6"W x 0.7"H	Metal
	Tech Lighting Brummel Grande Pendant	Ceiling Suspended	Decorative	2	Luminaires for Internal Lighting	2700K	LED	60W	20"W x 10.7"H	Matte Black

FF & E

SCHEDULE

Furniture and Equipment Schedule						
	Manufacturer and Model	Quantity	Overall Height	Overall Width	Color and Finish	Material
Kitchen	Bernhardt Charlotte Chair	6	0' - 31 7/8"	0' - 23"	Knoll Instinct Blush	Soilid Wood 860
	Coalesse Potrero415 Table	1	0' - 30"	0' - 96"	Formica Aged Ash	Plastic Laminate
	Hightower Grace Barstool	3	0' -40.6"	0' - 18.1"	Formica Aged Ash	Formica Aged Ash
Upstairs Lounge Area						
	Turnstone Campfire Pouf	2	0' - 18"	0' - 15"	DesignTex Bute Storr Creme	DesignTex Bute Storr Creme
	Coalesse Holy Day Round Table	1	0' - 35.5"	0' - 35.5"	Light Wood	Solid Wood
	Coalesse Passerelle Lounge Sofa	1	0' - 27"	0' - 56.5"	DesignTex Distressed Texture Spice	DesignTex Distressed Texture Spice
	Uhuru Stoolen	1	0' - 16"	0' - 16"	Walnut	Solid Wood
	Coalesse Paddle Chair	2	0' - 28.75"	0' - 28"	Walnut Wood	DesignTex Mountainous Orange
	Urban Tree Block Side Table	1	0' - 14"	0' - 14"	Walnut	Solid Wood
	Coalesse Enea Altzo943	6	0' - 38.5"	0' - 18.25"	Light Wood	Knoll Instinct Blush
	Coalesse Potrero415 Table	1	0' - 30"	0' - 96"	Formica Aged Ash	Plastic Laminate

INDEX:

Sustainable sources + systems utilized

COVID-19 Materials:

Silver and copper imbedded solid surface

Quartz (non-porous)

Stainless Steel

Antibacterial paint, fabrics and upholstery

Indigo lighting

HVAC – indoor air quality and plants

Natural daylight

Porcelain tile

Terrazzo (epoxy)

Bleach cleanable fabric and carpet

Unique Sustainable Companies Used:

Fireclay Tile

They buy used, repurpose, and take care of what they have, and they use recycled materials whenever possible.

Flor

Offering a return & recycle program to turn old FLOR tiles into new products; and, transitioning there entire collection to 100% recycled yarn.

Concertex

Concertex is striving to make products available to the A&D community that will help to create healthier, more cleanable interiors.

Design for COVID-19:

Touchless hand sanitizer located prior to entry at critical doors and all restrooms and dining spaces.

Touchless faucets

Touchless hand dryers

Foot operated door openers

Touchless toilet flushing

Automatic doors at entry to reduce spread of germs.

HEPA air filters