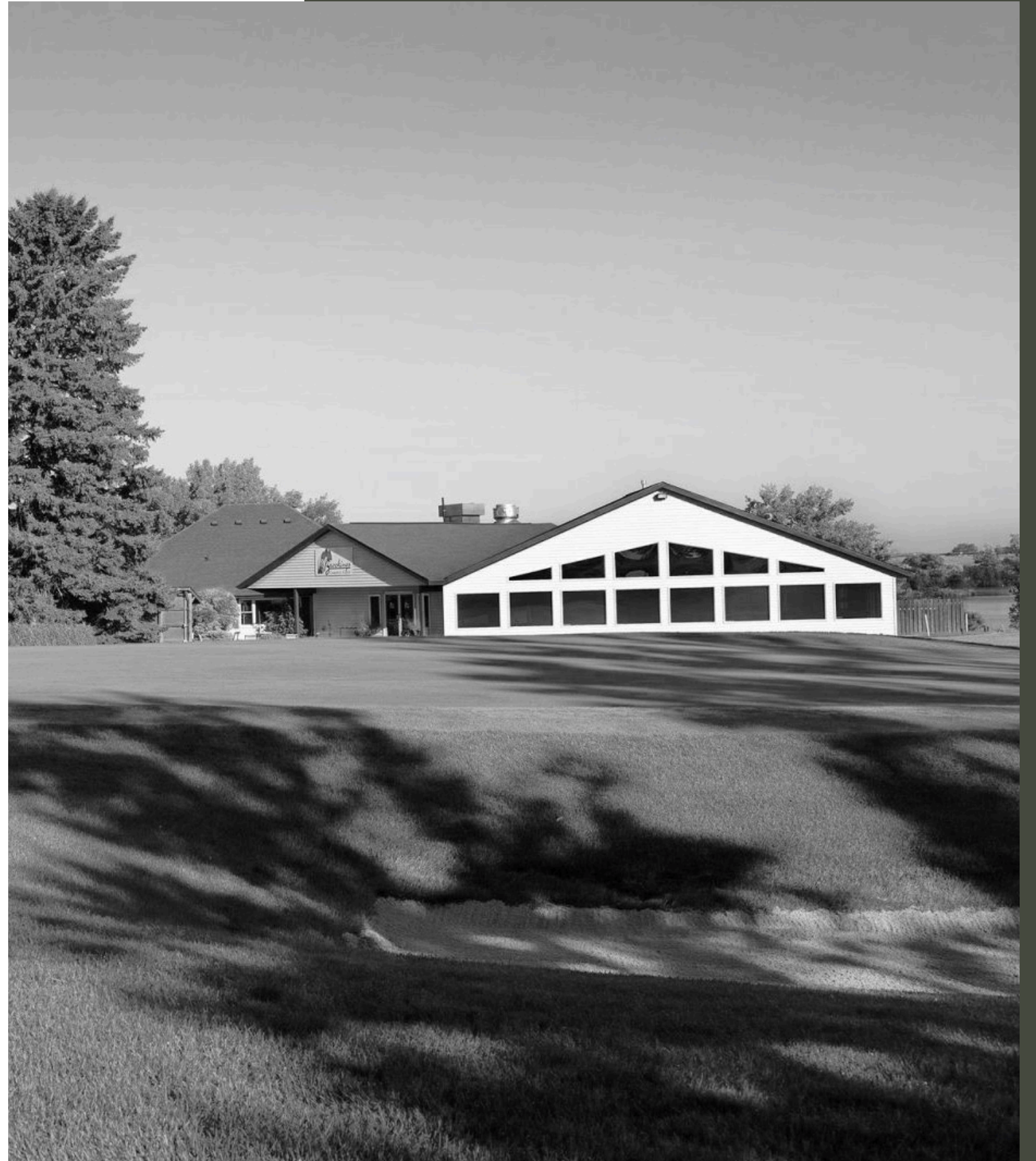


---

# BROOKINGS COUNTRY CLUB

Designed by: Keely Schild  
ID.451: Hospitality Design  
Fall 2020 SDSU Interior Design  
Instructor: Dallas Willman



# Table of Contents

Project Introduction.....	3
Country Club History	
Project Brief	
Design Considerations	
Program Development.....	4
Visionary Statement	
Budget + Goal Setting	
Members	
Year Round Use	
Seasonal Programs	
Plan Documents Disclosure	
Site Analysis.....	5
Precedent.....	6
Target Market.....	7
Brookings Country Club Promises.....	8
Brand Differentiators.....	9
Concept.....	10
Goals and Objectives.....	11
Process.....	12
Floor Plans.....	13-14
Mood Board 1.....	15
Entry.....	16-17
Bar + Grill.....	18-20
Guest Suites.....	21-22
Mood Board 2.....	23
Banquet.....	24-25
Pro Shop.....	26-27
Formal Dining.....	28-29
Mood Board 3.....	30
Spa Entry.....	31-32
Fitness.....	33-34
Pool.....	35-36
Index.....	37
Conclusion.....	38



# s p a t i a l

## requirements

Entry  
2,187 sq. ft.

Bar + Grill  
2,965 sq. ft

Formal Restaurant  
1,950 sq. ft.

Pro Shop  
2,014 sq. ft

Banquet  
5,715 sq. ft.

Guest Suites  
8,435 sq. ft

Spa  
2,129 sq. ft.

Pool  
3,853 sq. ft

Fitness Center  
1,647 sq. ft.

### Country Club History

- 1920s: Started by a group of Brookings residents when they mowed the land behind Fishback farm
- 1921: Leased and expanded 50 acres
- 1926: Clubhouse built
- 2012: Herfort and Norby Golf Course Architects were hired and designed current layout
- Today: The Brookings Country Club is looking to update their clubhouse facilities and add more event space.



outside facade

existing bar

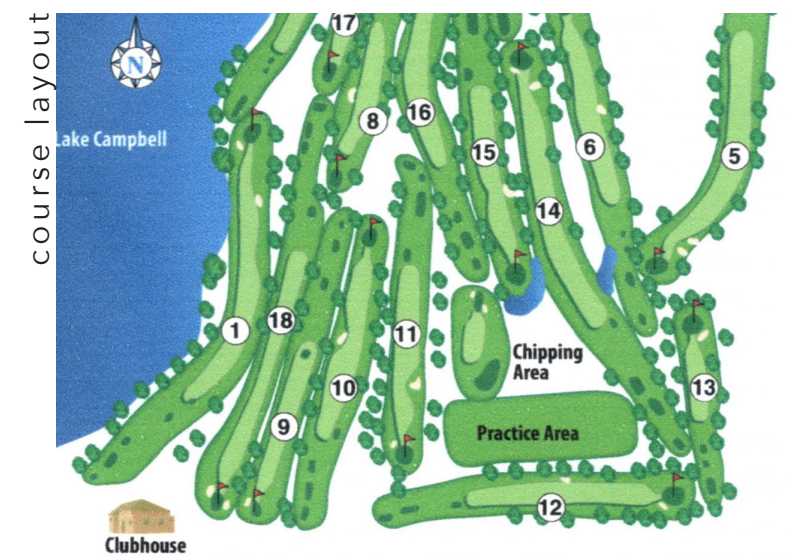


### Design Considerations + Wants

- Two golf simulators
- Golf shop entry
- Modern feel to country club
- Updated locker room
- Redesigned entry
- Sports area (pool, pickle ball, tennis courts)
- Three - four sleeping units
- Outdoor patio and bar
- Larger event space
- Maximize views and natural daylight
- Additional bar space
- Updated and larger bathrooms

### Scope of Services:

- Brookings Country Club is looking to update its current facilities
- The course is used by the SDSU golf teams and members
- Clients want a more updated, modern facility were they can host larger events and recruit more members
- The design process will include: Site measurements, client interviews, programming, schematic design, and lastly design development and final designs.



course layout

# Program Development

---

## Seasonal Programs

- Weddings
- Holiday parties
- Bridal showers
- Baby showers
- Conferences
- Graduation Parties
- Meetings

## Year Round Use

- Golf simulator
- Bar + Restaurant
  - Pro shop
- Event Space(s)

## Members

- Gen Y and X
- Singles, couples, families, parties, and groups.  
**How it is achieved:**
- Design a more modern facility, but yet consider members money in material and furniture selections.
- Design within a neutral color palette to suite all generations
- Easy wayfinding for all ages

## Budget + Goal Setting

- Funding from members
  - Outside businesses (local, SDSU)
  - Private investors
- Considerate with their money

## Planning Document Disclosure

This is not for design and construction purposes. The designs and drawings cannot be distributed to a design firm or an architectural firm without approval from SDSU school of Design and the student designer.

These documents can help visualize the many opportunities that the Brookings Country Club could offer.

# Site

- Brookings  
Population:  
24,509
- **15 minutes drive**  
to country club  
from Brookings.

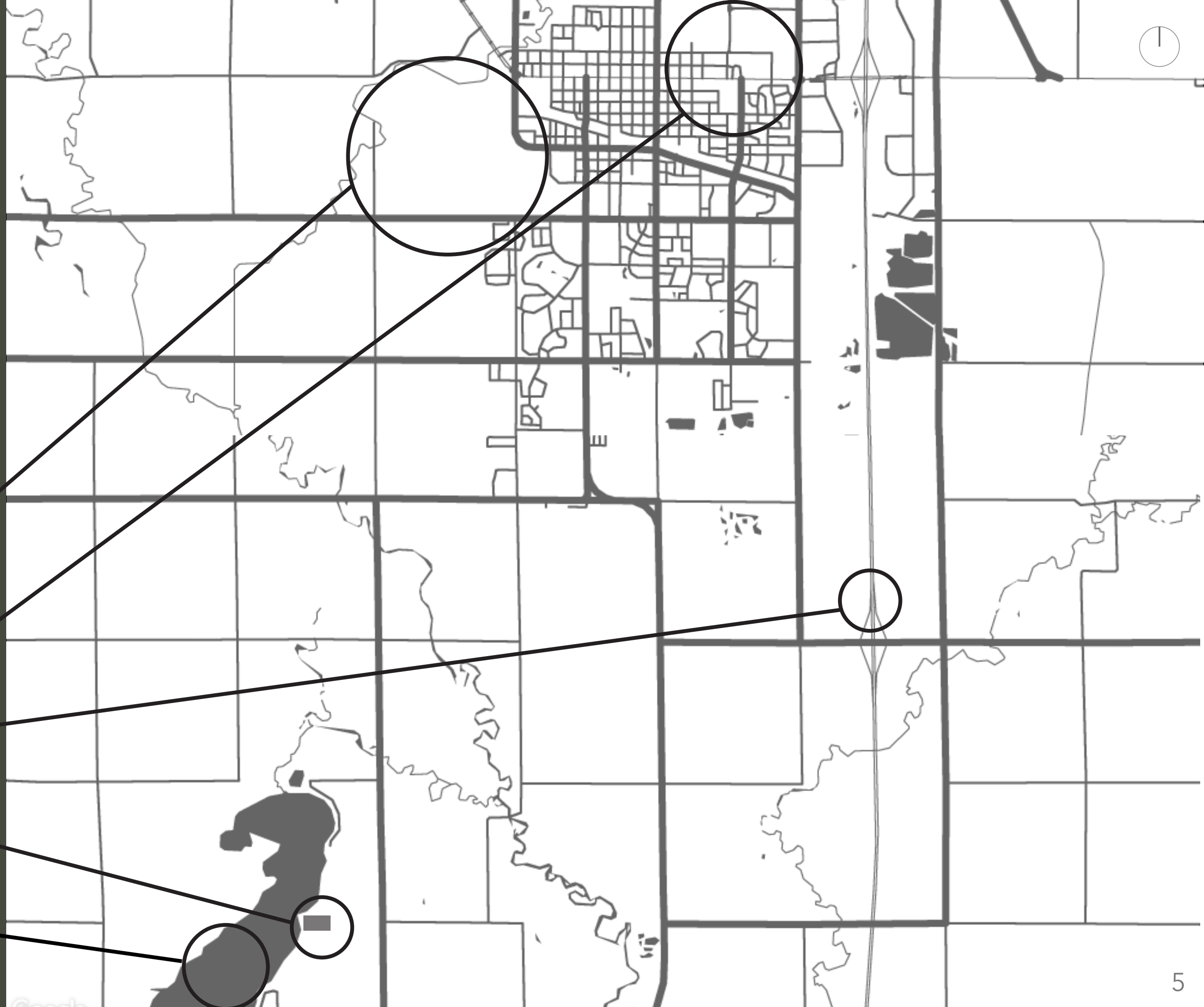
Brookings  
Regional Airport

South Dakota  
State University

Interstate 29  
North-South

Brookings  
Country Club  
2180 Clubhouse Dr,  
Brookings, SD 57006

Lake Campbell





# Precedent Analysis

## **Samsun Golf Club** | 2015-2016

Adnan Menderes Bulvarı No:33,Denizevleri Mahallesi, 55200

Atakum/Samsun, 55200 Atakum/Samsun, Turkey

Country Club | **26,910 sq ft.**

Architects: **CAA.Studio**

| Samsun Golf Club, is on a spot where it can benefit from both the **sea view** and **golf course green view**.

| A strong but also a calm expression of the building was achieved by using **natural materials like zinc, wood, and stone**. Roofs are covered with the same materials both inside and outside which resulted in a **solid slab effect**.

| Because the sea view is on the West side of the building, **roof angles** are set accordingly to get **optimal sunlight control**.

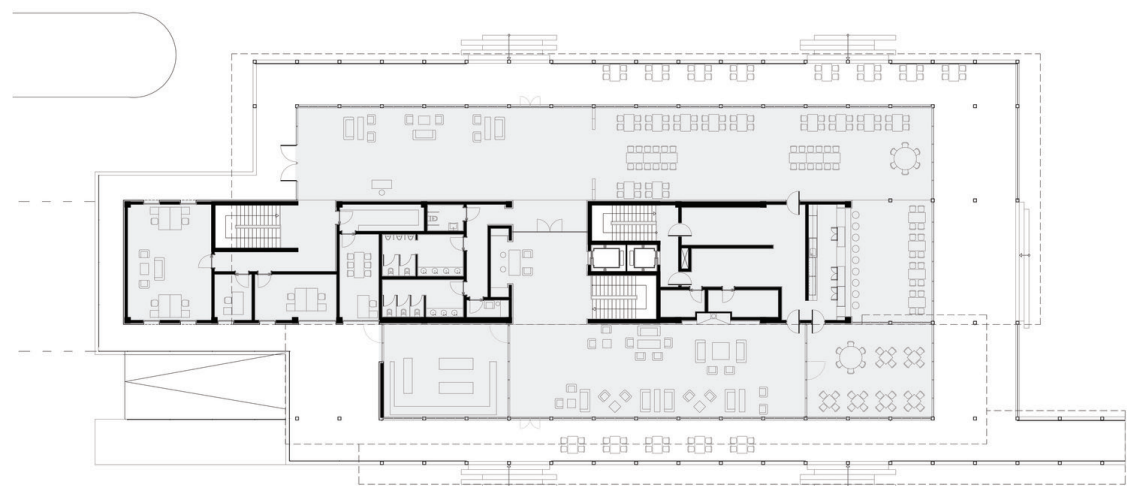
## **Design Features:**

Views to exterior

Semi-open and closed spaces

Intimate and open dining spaces

Natural material palette with pops of color





# target market

Creating spaces and amenities to draw younger generations in like Gen Y and X. Brookings Country Club will target the younger generation and their families to draw them in and as if it is a home away from home. Offering local amenities and thoughtful service will make people want to come as it will have the needs they are looking for in a place all in one location.

Designed for people ages 28-46

## Local Connoisseur

These people are the **locals in Brookings** of all ages who love to try new things and keep things simple. They love to send a **weekend away with everything all in one place** with things to do for them and the family. These are the people who **enjoy golfing** anytime during the week with family.

## Witty Adventurous

The witty adventurous are younger people who love **weekend getaways with friends**. This group in the mezzo level, a close distance from Brookings. They love a **unique experience unlike any others with amenities on site**.

## Travel Enthusiast

The travel enthusiast travel the Midwest and are **very active people** who are very **on the go** but love to **sit and relax at vacation spots**. These people are far from Brookings but are looking for a **great weekend stay**. They love **easy access to activities and local amenities**.



# Brookings Country Club Promises: A Positive Stay

To enhance the lives of our customers by creating and enabling unsurpassed vacation and leisure experiences. The objects tell how we secure, support and deliver the promise to integrate living spaces in natural environments and giving people a full life experience in a sustainable and well looked after environment.

## One

### Thoughtful Amenities

All guest rooms provide a **modern space** where travelers can **relax, refresh, and recharge**. Sleep comfortably on our memory foam mattresses, watch your favorite shows on flat-screen TVs, and stay connected with free WiFi. Every guest will be provided with **local SDSU cheese** to keep the connection to Brookings.

## Two

### Positively Local

Brookings Country Club will be **designed with local character** of not only Brookings but South Dakota as well. We will make your **stay away from home more welcoming**. Brookings country club invites the city in with a **design and vibe that showcases the area's history and culture**.

## Three

### Midwest Nice

At all times we will provide an **efficient, friendly and helpful service** to all our customers. Our dedicated, well-trained staff are committed to listening to our customers' suggestions and comments in striving to exceed their expectations.



# Inviting Stay

The **open and welcoming lobby** gives the **feeling that says come on in. While the vibe says stay awhile.** This place is unlike any others and gives the feel of Brookings and South Dakota all in one place.

# Relax to Revive

We make it easy, with open, inviting spaces and friendly enthusiasts who are always eager to help. **This rustic, hip hotel vibe offers a bar & grill;** anytime is a good time for relaxing over great food and drink. We offer a **peaceful spa & pool** that gives **new strength and energy** to you while relaxing.

## Brand Differentiators

# Surprising Extras

A **welcome gift, local food, and a free tasting every evening.** Join us at the bar every evening to **sample** one of our favorite **local wines, beers or spirits.** On the house, of course. Upon check-in, **SDSU cheese** is **given to each guest** free of charge.

# Connected Stays

Guests can use their phones to stream preferred entertainment, control TV channels, climate, and lighting through the guest suites. **Contactless check-in** available with kiosks located in lobby.



# Concept

## heartland homestead

Contemporary without being unattainable, **textured warmth** and **Scandinavian Modern furniture** with **eclectic touches** that embody the practicality and personality of the Midwest. The **deep forest green, warm orange, yellow colors** and **natural wood** come from the **trees and landscape** of South Dakota and will be expressed throughout the country club. When guests enter the country club they will get a sense of a **fun, inviting** and **welcoming environment** that is **unlike any other place** they have stayed at. They will get a **feel of what Brookings** and South Dakota is **upon entering** and that will be shown throughout the whole space. The country club will give a real **sense of depth** and **history** to all guests through **artwork** and **local materials**.



# Goals + Objectives

To update the current facility to become more modern and reflect personality of Midwest.

- **Neutral color scheme** with pops of green throughout the space
- **Maximize views** and natural daylight.
- **Develop a new entry** to improve wayfinding and the user experience.
- **Expansion to add a third level** to get 360 views of country club.
- Enhance current space with **updated finishes, furniture and lighting.**

To create a high functioning multi-use space.

- **Multi-seating** in areas for eating and drinking.
- **Areas for activities** other than golfing for other members.
- **Utilize various** dining and lounge spaces.

Maximize economic design by maintaining the existing structure + its best features.

- **Reuse** as much of the **current construction** as possible.
- **Utilize sustainable materials.**
- **Recycle all waste** that is produced through the restaurant/bar.
- The use of **locally sourced materials.**
- Keep as much of the **original structure**, doors and windows as possible.

Providing the health and wellness to the users of the space.

- To offset the hard surfaces in the space, soft materials applied to help **absorb sound in the space.**
- Walls painted a cool color to make the **space feel larger** as cool colors recede as well as make the space seem more active and brighter.
- Plants used to support **indoor air quality.**

Incorporate historic elements to tie back to the building and location.

- **Incorporate golf artifacts.**
- **Preserve historic elements.**
- Provide **connection to location** through interior elements.
- Create an atmosphere in which guests are left **wanting to come back.**
- Use **actual images of the old country club** building and its golfers.



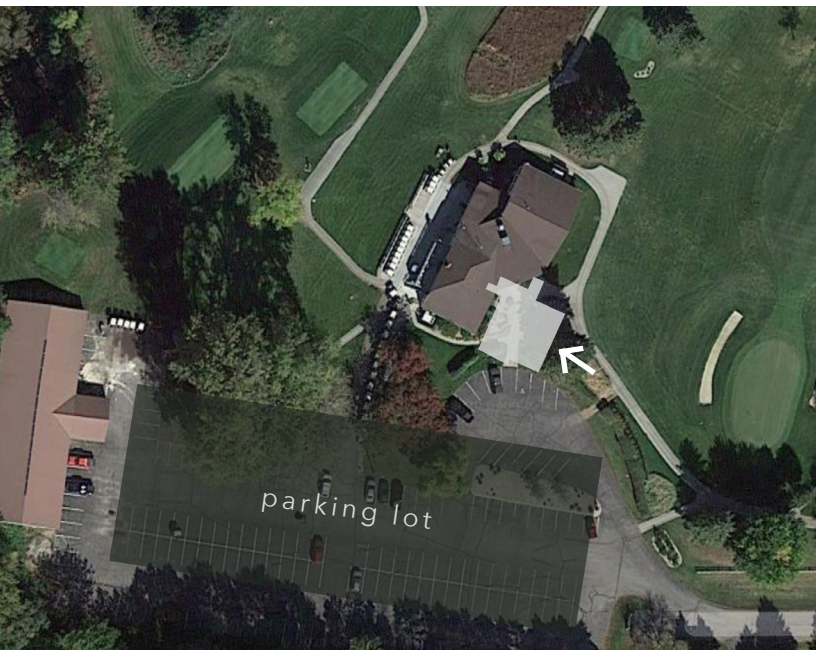
# Process

Current square footage: 10,000

Site plan - existing

New square footage: 62,897

Grey blocks - addition



SE Corner - Larger **entrance** and updated restrooms.



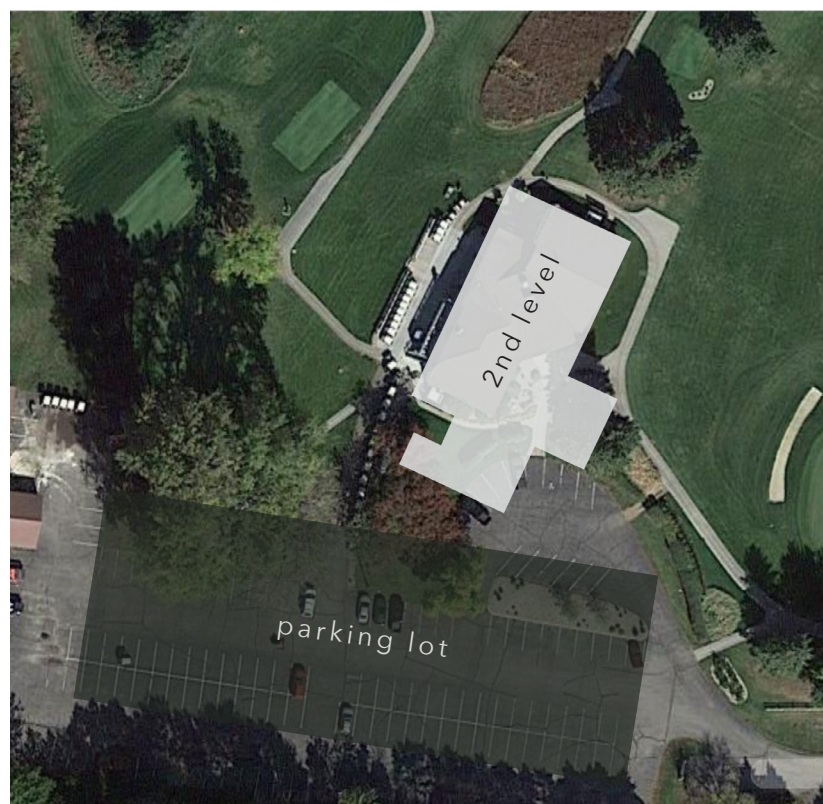
NE Corner + NW Corner - Larger **Bar and Grill Restaurant**



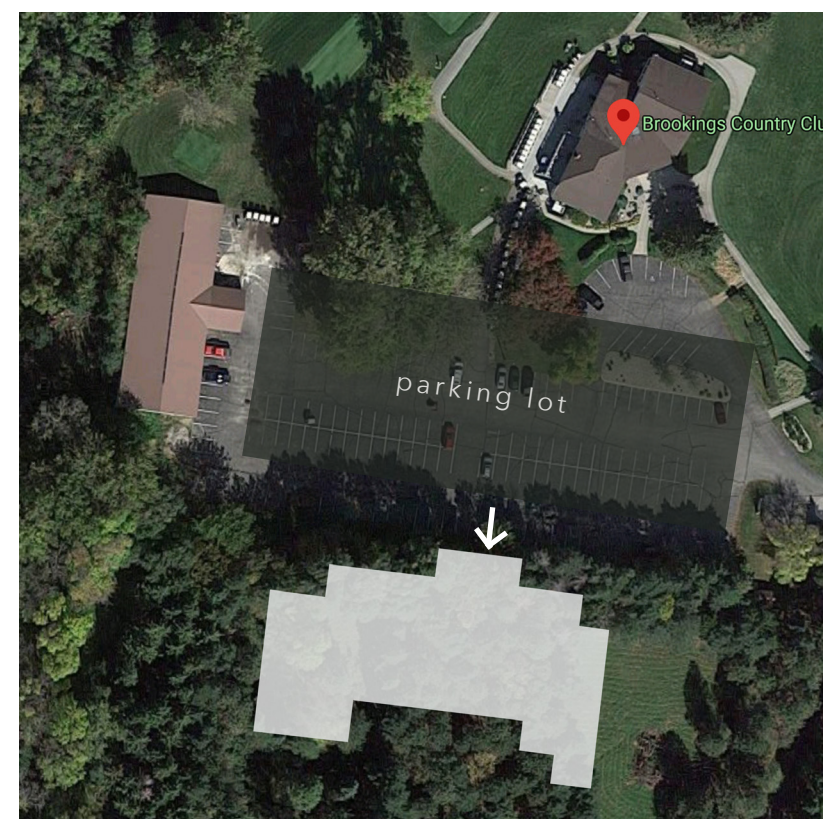
SW Corner - Larger **formal dining** space and larger kitchen to the north.



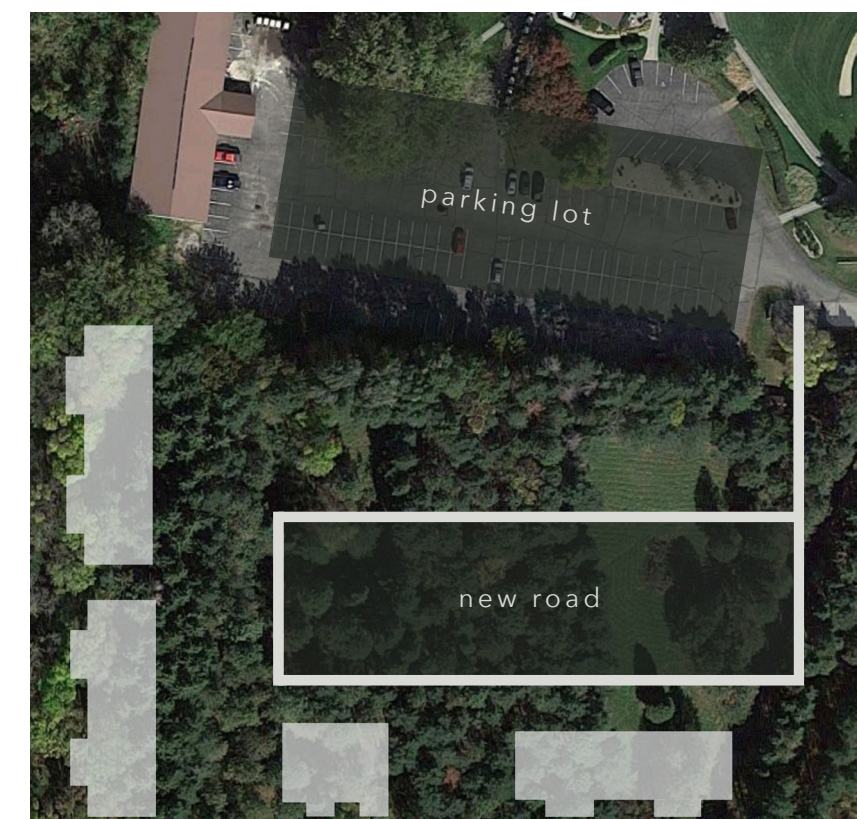
South End - **Pro shop** near entrance, larger entrance near and larger restrooms.



Additional Level - Larger **banquet** space with pre function and outdoor patio.



South End - Addition of **spa, pool, and fitness center** to the country club.



South End - Addition of **guest suites** with one, three and four bedrooms.



## WELL v2

### AIR

| Microbe and mold control -  
Implement ultraviolet air  
treatment.

### LIGHT

| Enhanced daylight access  
through space planning +  
existing windows

### MOVEMENT

| Enhanced ergonomics  
through furniture selections &  
space planning, while  
ultimately keeping physical,  
visual ergonomics + code in  
mind.

## LEED

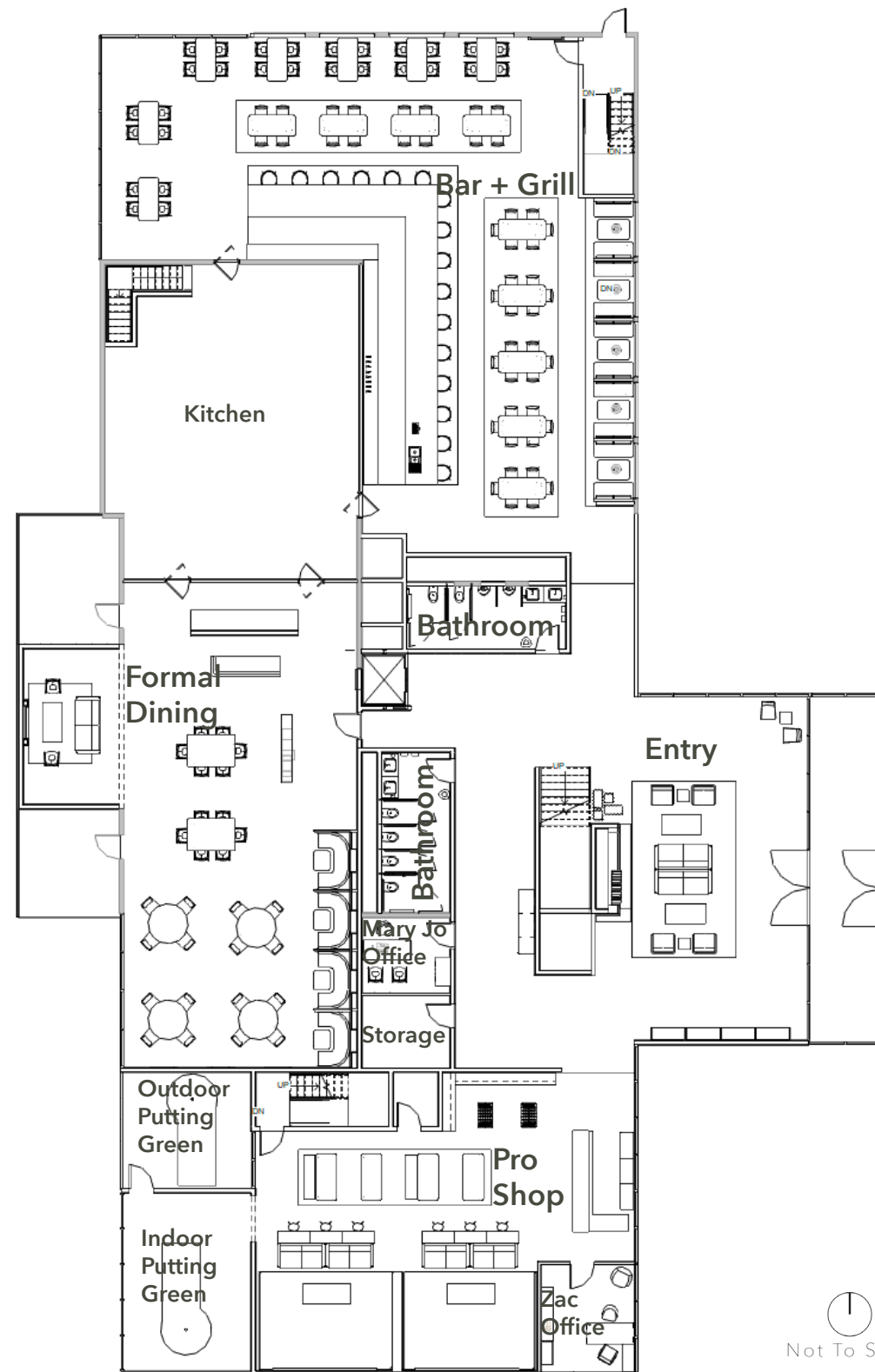
### ENERGY & ATMOSPHERE

| Green power  
| Energy performance  
| Enhanced commissioning

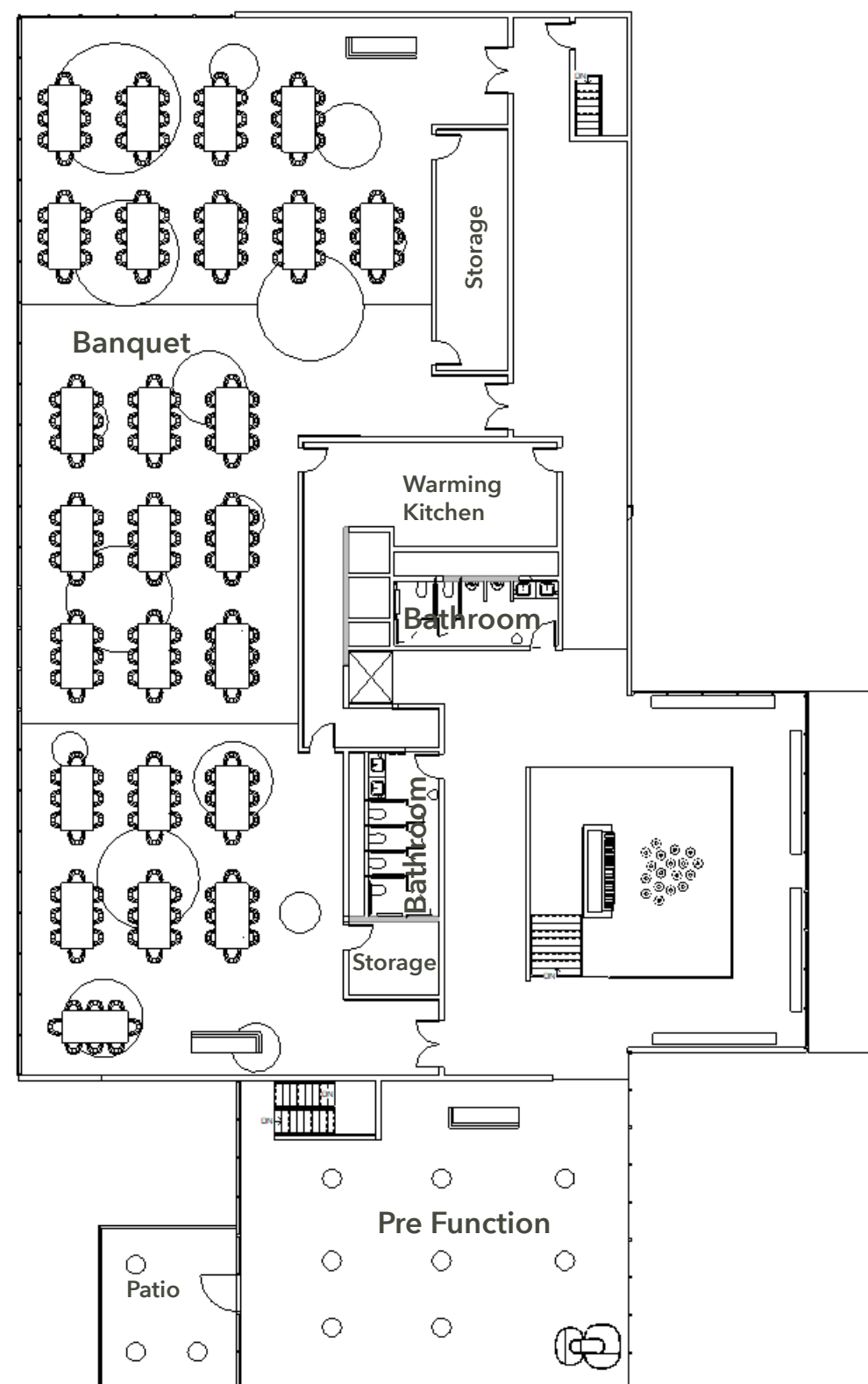
### INDOOR ENVIRONMENTAL QUALITY

| Daylight and views  
| Thermal comfort  
| Low-emitting materials

## First Floor



## Second Floor



Not To Scale

## Application Legend

- + ADA accessible restrooms
- + New entrance for easy wayfinding
- + Varied seating for user comfort
- + Fireplaces added for thermal comfort
- + Daylight for a connection to nature

- + Casual, yet high end facility
- + High ceilings
- + Clear wayfinding
- + Comfortable furniture
- + Golf cart storage under main facility

## WELL v2

### MIND

| Access to nature by maintaining connection between indoor + outdoor with ample window access.

### WATER

| Water filtration system through the spaces.

### COMMUNITY

| Accessibility + universal design by implementing codes.

## LEED

### ENERGY & ATMOSPHERE

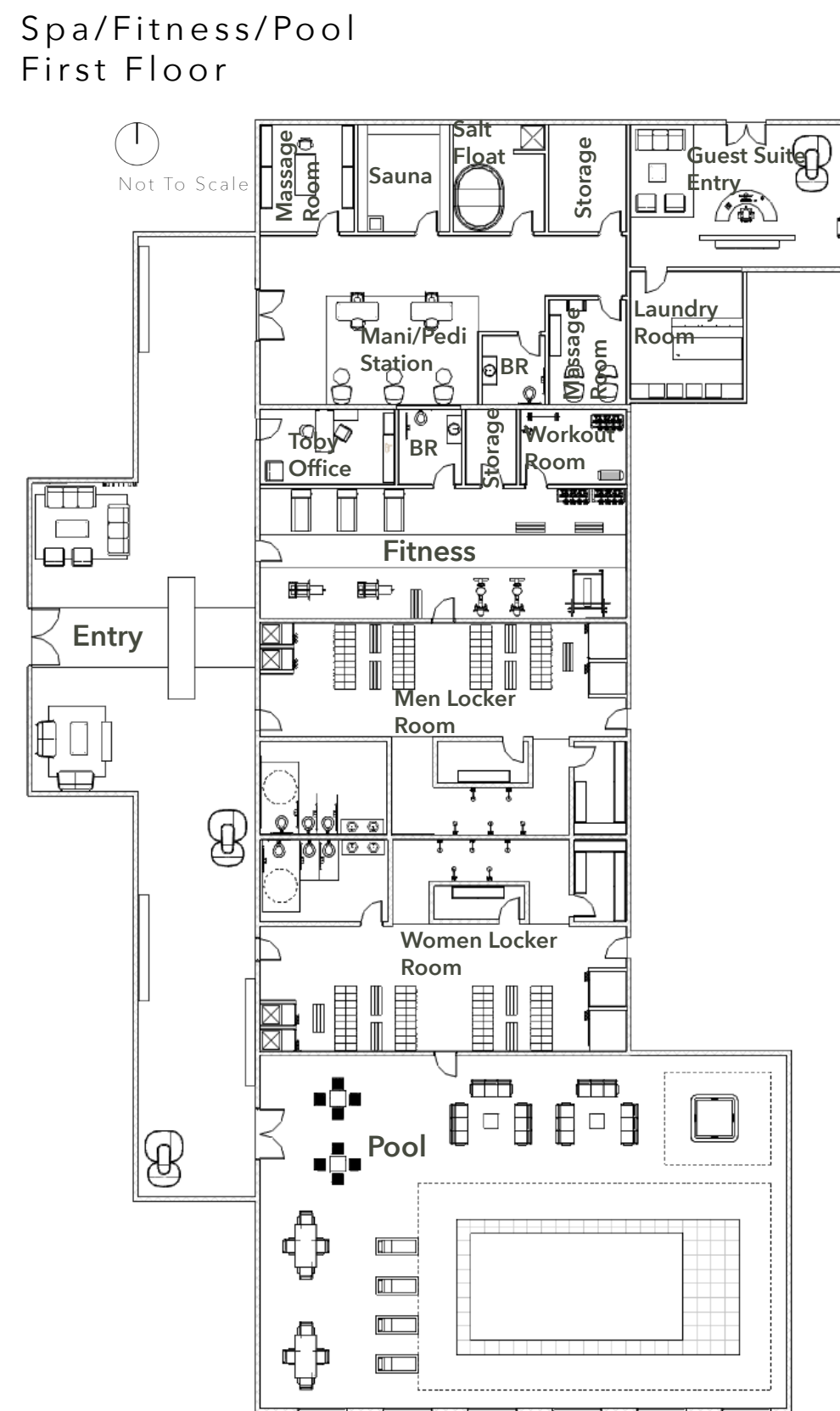
| Green power  
| Energy performance  
| Enhanced commissioning

### INDOOR ENVIRONMENTAL QUALITY

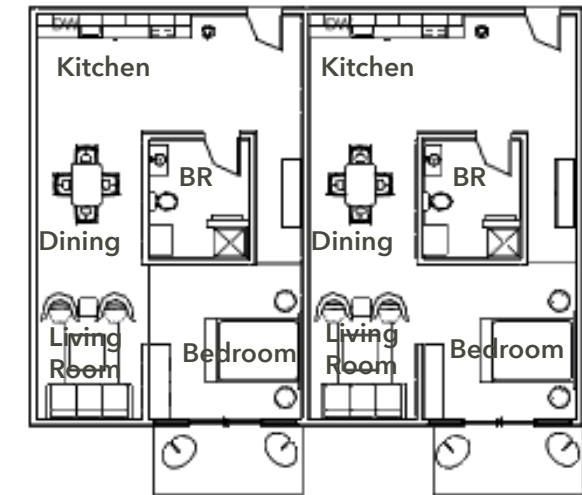
| Daylight and views  
| Thermal comfort  
| Low-emitting materials

## Application Legend

- + ADA accessible restrooms
- + New facility near country club
- + Varied seating for user comfort
- + Sustainable materials
- + Daylight for a connection to nature



### 1 Bedroom Cabin



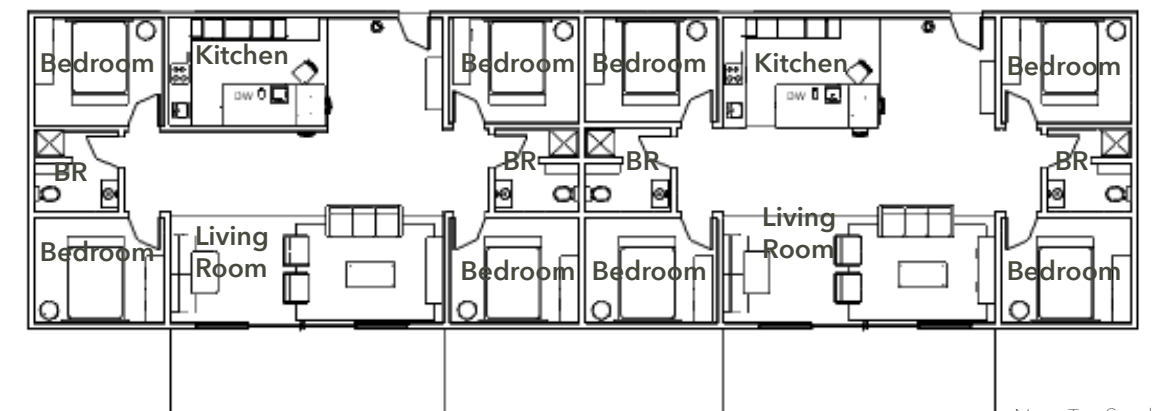
Not To Scale

### 3 Bedroom Cabin



Not To Scale

### 4 Bedroom Cabin



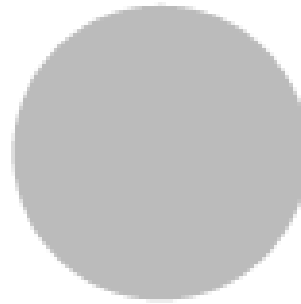
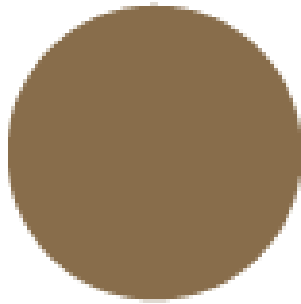
Not To Scale

- + Economical materials
- + Durable materials
- + Materials chosen for acoustics
- + Dimmable lighting
- + Natural materials

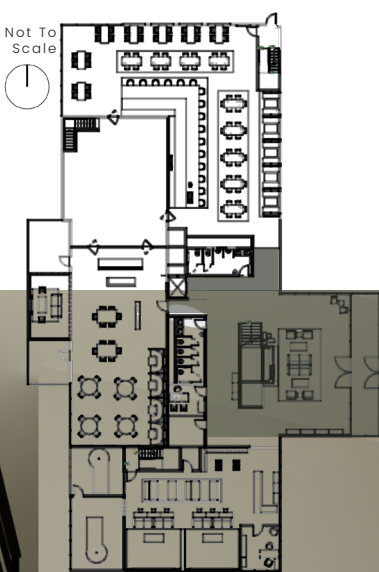


# Mood Board 1

Entry, Bar + Grill and, Guest Suites





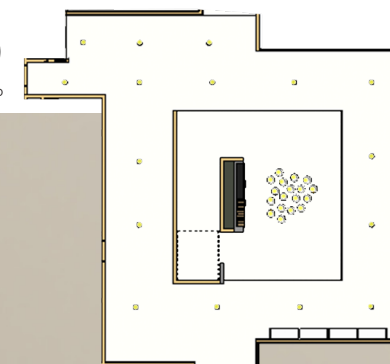


# Entry

Enlarged Floor Plan



Enlarged Ceiling Plan



Fireplace Entry Elevation

## WELL v2

### AIR

- | Effective + efficient air filtration system
- | Active VOC control through materials

### MATERIALS

- | Reducing volatile compounds through the selection of materials
- | Green color psychology of growth, renewal and new beginnings

### COMMUNITY

- | Universal design to make all the users feel welcomed
- | Accessibility + universal design

## LEED

### ENERGY & ATMOSPHERE

- | Green power
- | Energy efficient fixtures
- | Enhanced commissioning

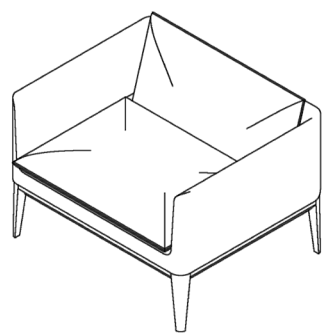
### INDOOR ENVIRONMENTAL QUALITY

- | Daylight and views
- | Use of natural materials and textiles
- | No VOC paint

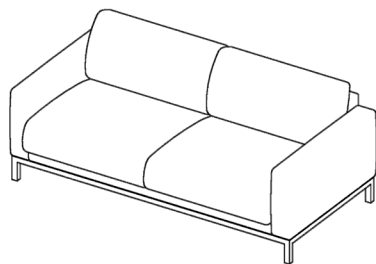




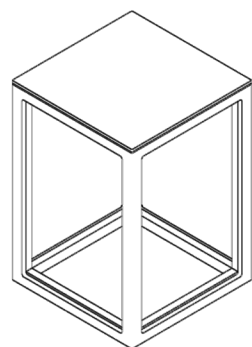
# Furniture + Fixtures



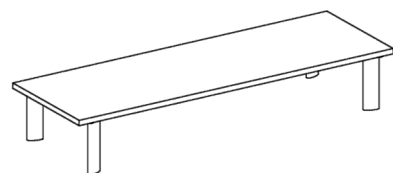
Bernhardt Atlantic Lounge Chair



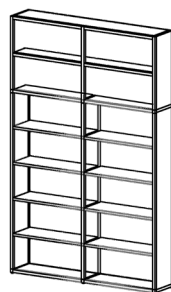
Bolia North 3 Seater Couch



Boss Design Metro Side Table



West Elm Boardwalk Coffee Table



Hightower 6 Tier Shelves



Tech Lighting Akova Pendant



Cyan Perk Up Sculpture



Cyan Gemma Puzzle Sculpture



Tech Lighting Lotus Round



Cyan Potteri Vase



Cyan Burgundy Green Succulent

# Application Legend

- + Fireplace for thermal comfort
- + Neutral colors to suit all generations
- + Signage to help users with wayfinding
- + Green brings growth, harmony & freshness to the space
- + Plaid textures reflect golf history
- + Multiple seating styles for user comfort
- + Walnut wood to create implied warmth

# Experience Legend

- + Open space
- + Clear wayfinding
- + Using material changes to specify place
- + Comfortable furniture
- + Lighting to create ambiance
- + Relaxed environment

# Materials

Carpet- Shaw Knotted Tile  
Argan 01100  
Texture/Aesthetics + Low Pile

Tile - TileBar Stack Stone  
Ebbor Ledger  
Texture + Durability

Tile - TileBar Bond Excalibur  
24x48 Matte  
Sustainable + Durability

Metal - Chemetal 625  
Aluminum  
Durable + Color

Rug - Flor Doe Re Mi Pebble  
Durable + Texture

Upholstery - Concertex  
Rustique Nutmeg  
Stain Repellent + Durability

Upholstery - Knoll North  
Island Wind  
Durable + Acoustics

Paint - SW Drift of Mist  
Color + Low VOC  
Paint - SW Ripe Olive  
Color + Low VOC

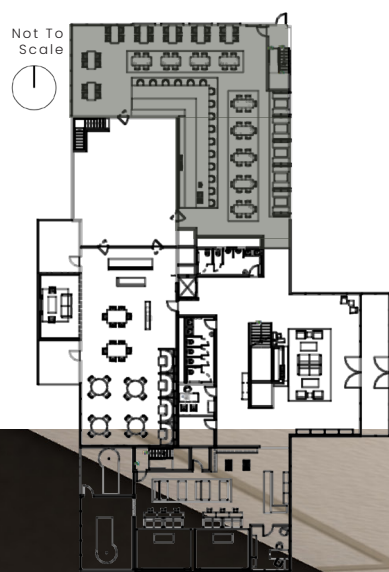
Luxury Vinyl Tile- Shaw  
Alder 07005  
Acoustics + Low Maintenance

Upholstery - Carnegie  
Quartz 64345  
Texture + Durability

Upholstery - Carnegie  
Tartan 64881  
Aesthetics + Durable

Upholstery - Concertex Vita  
Sepia  
Top Coat + Durable





# Bar + Grill

Enlarged Floor Plan



Enlarged Ceiling Plan



West Bar Section



## WELL v2

### LIGHT

| Enhanced daylight access through space planning + existing windows

### MIND

| Access to nature by maintaining connection between indoors and outdoors with ample window access

### MATERIALS

| Low hazard cleaning products for user health and wellness  
| Guidelines for safe disposal and recycling hazardous waste

## LEED

### ENERGY & ATMOSPHERE

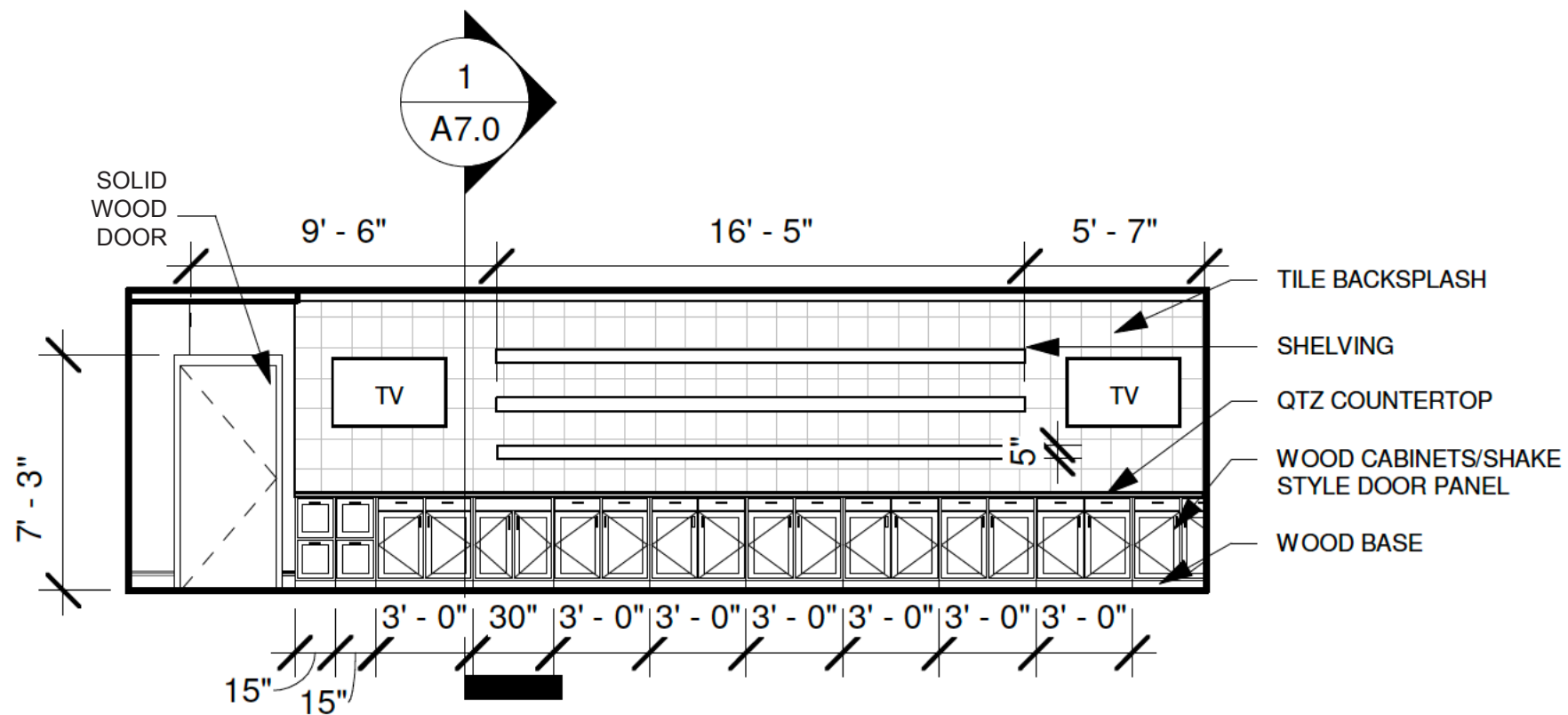
| Green power  
| Energy performance  
| Enhanced commissioning

### INDOOR ENVIRONMENTAL QUALITY

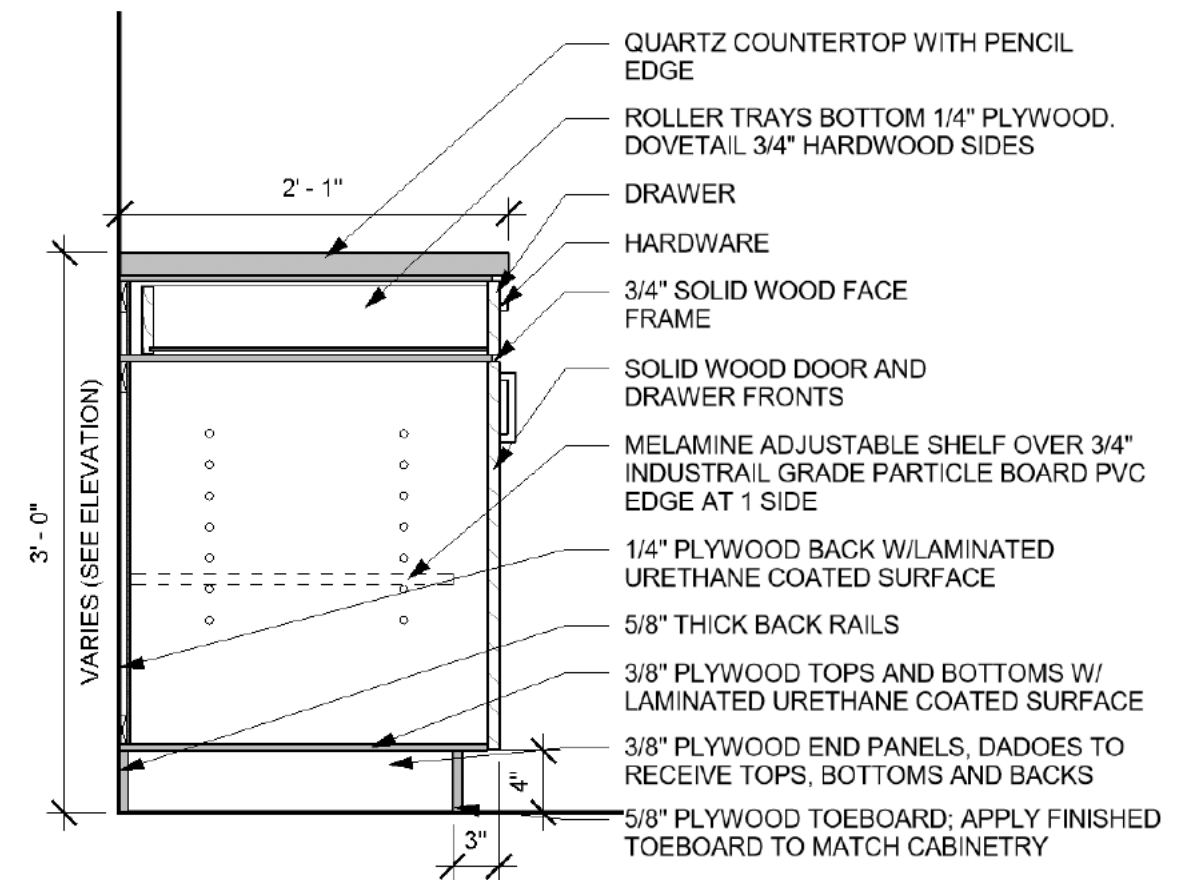
| Daylight and views  
| Thermal comfort  
| Low-emitting materials



# Bar + Grill millwork

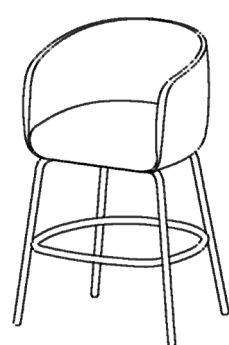


## Custom Millwork Elevation

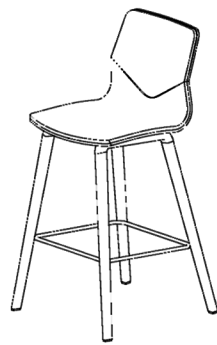


Custom Millwork section

# Furniture + Fixtures



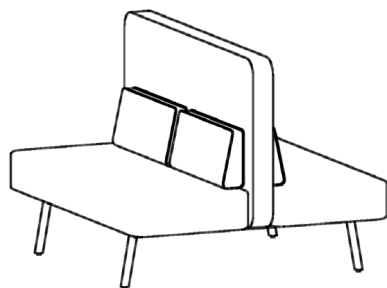
High Tower Nest  
High Chair



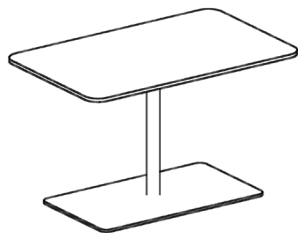
Hightower Four Sure  
Wood Bar Stool



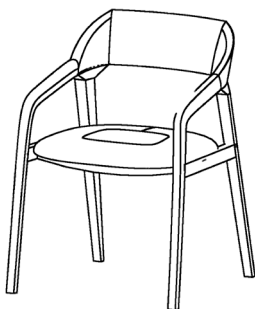
Hightower Nadia  
Bar Table



Medinah High Back  
Banquette



Medinah Table 48"



Bernhardt Charlotte  
Chair



Tech Lighting Mina  
Pendant Black



Tech Lighting Joni  
Pendant Matte Black



Eureka Stroke  
Surface Mount



Tech Lighting Lotus  
Round



Cyan Burgundy  
Green Succulent

# Application Legend

- + Integrated branding to identify bar + grill
- + Dropped ceiling to create a sense of place
- + Green brings growth, harmony & freshness to the space
- + Plaid textures reflect golf history
- + TV for entertainment
- + Glazing for natural light and connection to outdoors

# Experience Legend

- + Open space
- + Inviting
- + Casual
- + Warm and relaxed environment
- + Comfortable furniture

# Materials

Carpet- Shaw Knotted Tile  
Argan 01100  
Texture/Aesthetics + Low Pile

Luxury Vinyl Tile- Shaw  
Alder 07005  
Acoustics + Low Maintenance

Wood - Driftwood Stain  
Color + Durability

Solid Surface - Cambria Windrush  
Sustainable + Low Maintenance

Brick - FireClay Klamath  
Sustainable + Durability

Paint - SW Drift of Mist  
Color + Low VOC

Paint - SW Ripe Olive  
Color + Low VOC

Metal - Chemetal 625  
Aluminum  
Durable + Color

Upholstery - Carnegie Tartan  
64881  
Aesthetics + Durable

Upholstery - Concertex  
Solitaire Bark  
Durable + Easy Cleanability

Upholstery - Concertex Vita  
Sepia  
Top Coat + Durable

Upholstery - Knoll North  
Island Wind  
Durable + Acoustics

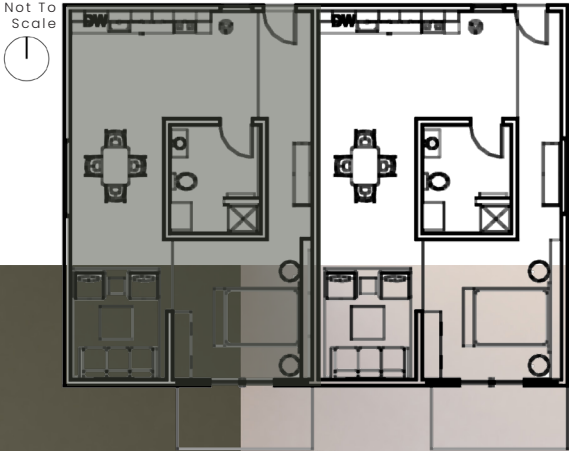
Upholstery - Concertex  
Rustique Nutmeg  
Stain Repellent + Durability

Upholstery - Carnegie Quartz  
64345  
Texture + Durability

Tile - TileBar HexArt Gris  
Deco  
Durable + Slip Resistance



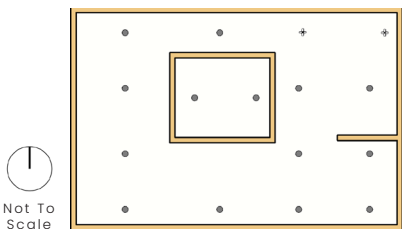
# Guest Suites



Enlarged Floor Plan



Enlarged Ceiling Plan



## Experience Legend

- + Open space
- + Casual
- + Warm and inviting
- + Comfortable furniture
- + Cool lighting
- + Relaxed environment

## Application Legend

- + Dark colors to create boldness
- + Lighting to avoid eye strains
- + Low VOC materials
- + Economical materials
- + Durable materials
- + Materials chosen for acoustics

## WELL v2

- LIGHT**
- | Maximizing natural light to offset energy costs
  - | LED fixture specifications for energy

- WATER**
- | Water filtration for user health and wellness
  - | Filtered water for general appliances for higher indoor air quality

- AIR**
- | Provide proper ventilation
  - | Effective + efficient air filtration system
  - | Active VOC control through materiality

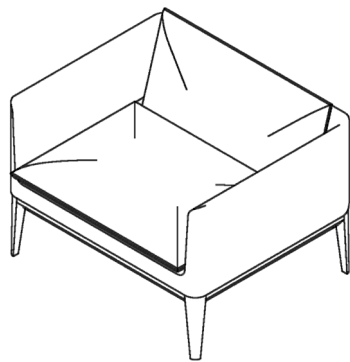
## LEED

- ENERGY & ATMOSPHERE**
- | Green power
  - | Energy performance
  - | Enhanced commissioning

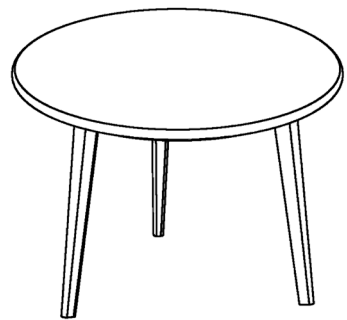
- INDOOR ENVIRONMENTAL QUALITY**
- | Daylight and views
  - | Thermal comfort
  - | No VOC paints



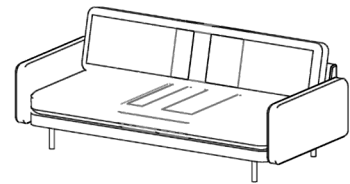
# Furniture + Fixtures



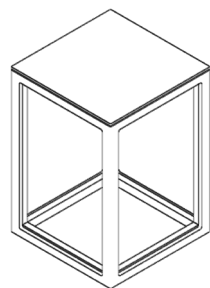
Bernhardt Atlantic Lounge Chair



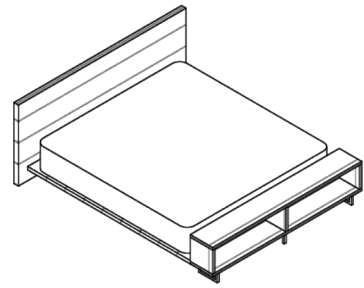
Bernhardt Brellin Occasional Table



Bolia Scandinavian 3 Seat Sofa



Boss Design Metro Table



Pottery Bar Brooklyn Storage Platform Bed



Florida Seating CN Kimbretta S Chair



Tech Lighting Modernrail Pendant



Tech Lighting Lotus Round



Cyan Perk Up Sculpture



Cyan Three In A Row Sculpture



Cyan Viso Sculpture



Cyan Arless Coasters

# Materials

## palette 1

Carpet- Shaw Dots Morph 76530  
Texture/Aesthetics + Low Pile

Solid Surface - Cambria Versilla Grigio  
Low Maintenance + Sustainable

Wood - Rockport Stain  
Color + Durability

Tile - TileBar Paris Antique Mirror  
Sustainable + Color

Paint - SW Messenger Bag  
Color + Low VOC

Paint - SW Mindful Gray  
Color + Low VOC

Upholstery - Concertex Rustique Nutmeg  
Stain Repellent + Durability

Upholstery - Concertex Luxe Flint  
Top Coat + Durable

Rug - Flor Winston Fog  
Color + Texture

Luxury Vinyl Tile - Shaw Thatch 0453V  
Acoustics + Low Maintenance

Upholstery - HBP Hipster Durkin Classic  
Durable + Aesthetics

Upholstery - Knoll Velvet Sage  
Durable + Acoustics

Upholstery - Concertex Spectra Rust  
Texture + Durability

## palette 2

Brick - FireClay Hunter Green  
Sustainable + Durability

Brick - FireClay Rose Mary  
Sustainable + Durability

Wall Covering - Concertex Sacred Grove Snow Flake  
Texture + Durable

Upholstery - Concertex Rustique Pumpkin  
Stain Repellent + Durability

Upholstery - Concertex Luxe Trail  
Aesthetics + Low Maintenance

Upholstery - Knoll Velvet Silver  
Durable + Color

Upholstery - Designtex Mohair Plus Clay  
Durable + Stain Repellent

Upholstery - DesignTex Bute Melrose  
Texture + Color

Carpet- Shaw Tile Suites Muslin 79516  
Texture/Aesthetics + Low Pile

Paint - SW Modern Gray  
Color + Low VOC

Wood - Concertex SP Deep  
Color + Durability

Solid Surface - Cambria Versilla Grigio  
Low Maintenance + Sustainable

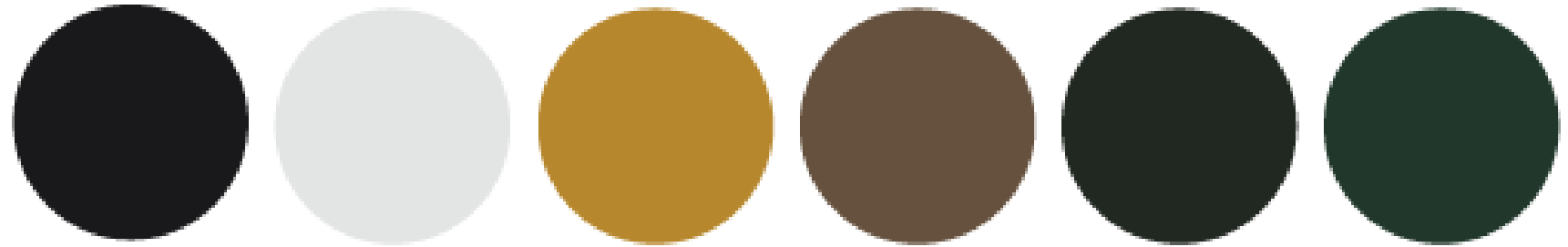
Rug - Flor Pleats and Thanks Pigeon  
Durability + Pattern

Luxury Vinyl Tile - Mannington Spacia Dusky Walnut  
Texture + Durability



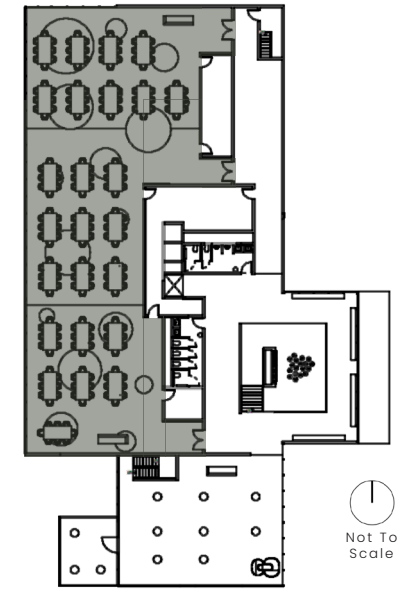
# Mood Board 2

Banquet, Pro Shop, and Formal Dining

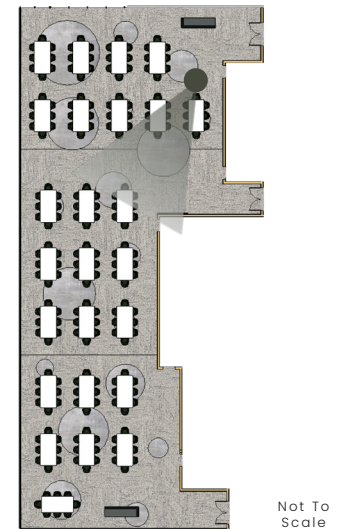




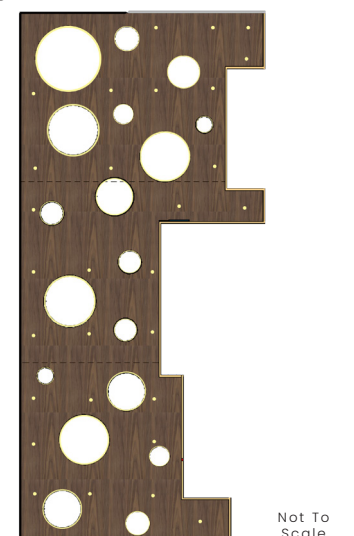
# Banquet



Enlarged Floor Plan



Enlarged Ceiling Plan

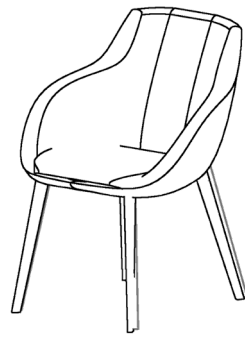




# Furniture + Fixtures



Coalesse Potrero 415 Table



Bernhardt Chantal Guest Chair



Eureka Ceiling Surface Cycle



Eureka Stroke Surface Mount



Tech Lighting Lotus Round

# Application Legend

- + Dark colors to create sophistication & boldness
- + Movable partitions to break up banquet spaces easier
- + Utilize mobile furniture for ease of reconfiguration
- + Maximize views to course and Lake Campbell for connection
- + Angled acoustical wood in shape to represent golf pin flag
- + 18 ceiling circles to represent 18 holes on golf course

# Experience Legend

- + Open space
- + Semi formal
- + Warm and inviting
- + Comfortable furniture
- + Lighting to create ambiance
- + Floor to ceiling windows

WELL v2

MATERIALS

| Low hazard cleaning products for user health and wellness.

| Guidelines for safe disposal and recycling hazardous waste.

LIGHT

| Enhanced daylight access through space planning + existing windows.

MIND

| Access to nature by maintaining connection between indoors and outdoors with ample window access.

ENERGY & ATMOSPHERE

| Green power

| Energy performance

| Enhanced commissioning

LED

INDOOR AIR QUALITY

| Daylight and views

| Thermal comfort

| Low-emitting materials

# Materials

Carpet- Shaw Knotted Tile Argan 01100  
Texture/Aesthetics + Low Pile

Tile - TileBar Bond Excalibur 24x48 Matte  
Aesthetics + Durable

Upholstery - Concertex Rustique Pumpkin  
Stain Repellent + Durability

Upholstery - Concertex Spectra Moss  
Durable + Acoustics

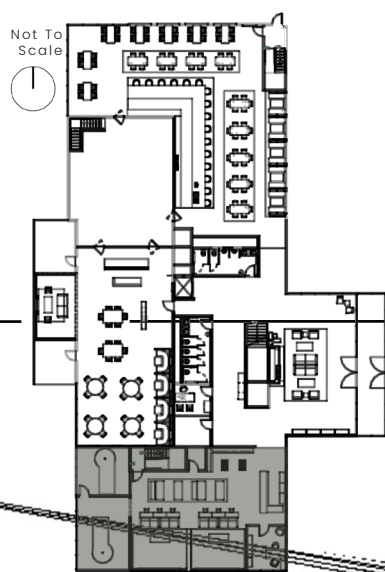
Wall Covering - Nappa Tile Wood Plank BP-092  
Sustainable + Durability

Wood - Armstrong Tegular Cherry  
Durable + Acoustical

Paint - SW Drift of Mist  
Color + Low VOC

Wall Covering - Wolf Gordon DAL 8-3463  
Acoustics + Durability



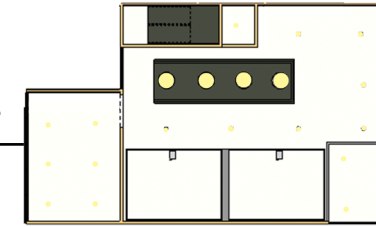


# Pro Shop

Enlarged Floor Plan



Enlarged Ceiling Plan



Not To Scale



## WELL v2

### WATER

- | Accessible drinking water
- | Water filtration system

### MIND

- | Sound mapping by space planning the golf simulators in the pro shop geared towards loud activity

### MATERIALS

- | Guidelines for safe disposal and recycling hazardous waste.
- | Reducing volatile compounds through the selection of materials

## LEED

### ENERGY & ATMOSPHERE

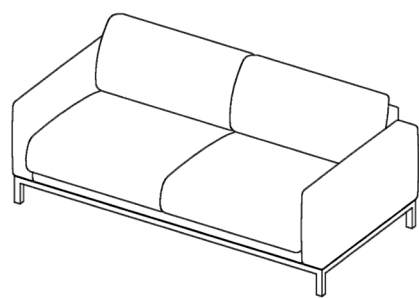
- | Green power
- | LED lighting
- | Enhanced commissioning

### INDOOR ENVIRONMENTAL QUALITY

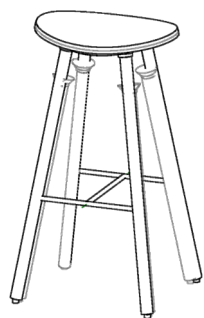
- | Daylight/views + outdoor putting green
- | Thermal comfort
- | Low VOC materials



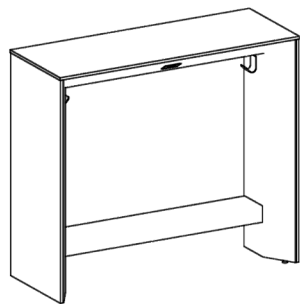
# Furniture + Fixtures



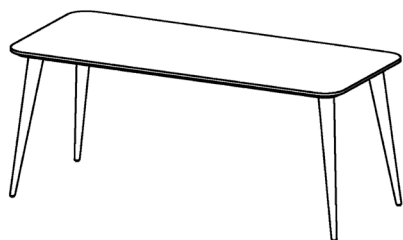
Bolia North 3 Seater



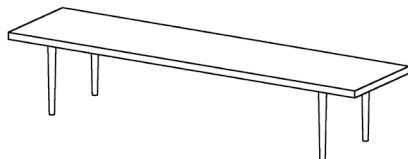
Coalesse Enea Cafe Stool Wood



Turnstone Campfire Slim Table



HighTower Nadia Table



Bolia Berlin Bench



Eureka Ceiling Suspended Area



Eureka Stroke Surface Mount



Tech Lighting Lotus Round

# Application Legend

- + Dark colors to create sophistication & boldness
- + Green brings growth, harmony & freshness to the space
  - + Plaid textures reflect golf history
  - + Lighting selections to avoid eye strains
  - + Overhang for sound masking
  - + Durable materials
- + LVT flooring for cleanability and durability purposes

# Experience Legend

- + Open space
- + Casual
- + Warm and inviting
- + Comfortable furniture
- + Cool lighting
- + Lighting to create ambiance
- + Relaxed environment

# Materials

Carpet- Shaw Knotted Tile Argan 01100  
Texture/Aesthetics + Low Pile

Upholstery - Concertex Rustique Pumpkin  
Stain Repellent + Durability

Upholstery - Carnegie Tartan 64882  
Aesthetics + Durable

Upholstery - Concertex Spectra Moss  
Durable + Easy Cleanability

Wall Covering - Concertex Aracena Cork Muslin  
Texture + Durable

Wall Covering - MDC Zintra Grass Tar  
Sustainable + Acoustical

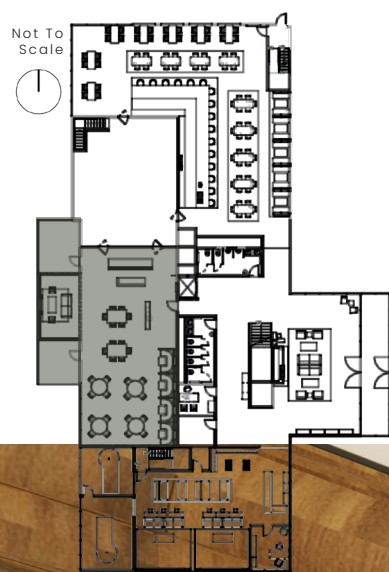
Paint - SW Drift of Mist  
Color + Low VOC

Paint - SW Ripe Olive  
Color + Low VOC

Luxury Vinyl Tile- Shaw Alder 07005  
Acoustics + Low Maintenance

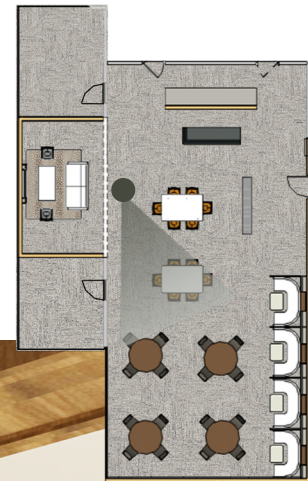
Turf - Ecore FITturf Plus  
Durable + Acoustical





# Formal Dining

Enlarged Floor Plan



Enlarged Ceiling Plan



South Wall Elevation

## WELL v2

### AIR

- | Effective + efficient air filtration system
- | Active VOC control through materials

### MATERIALS

- | Reducing volatile compounds through the selection of materials
- | Green color psychology of growth, renewal and new beginnings.

### COMMUNITY

- | Universal design to make all the users feel welcomed
- | Accessibility + universal design

## LEED

### ENERGY & ATMOSPHERE

- | Green power
- | Energy performance
- | Enhanced commissioning

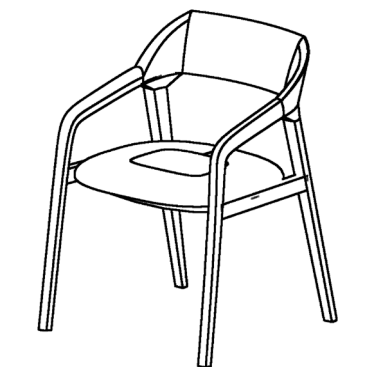
### INDOOR ENVIRONMENTAL QUALITY

- | Daylight and views
- | Thermal comfort
- | Low-emitting materials

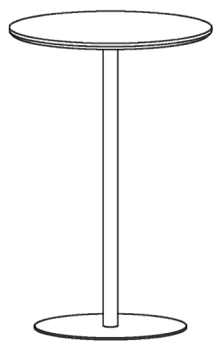




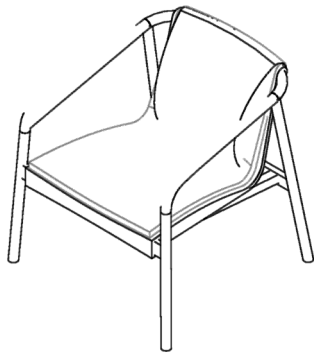
# Furniture + Fixtures



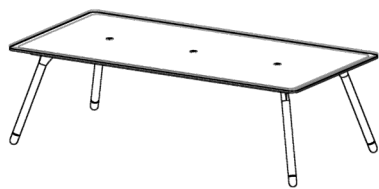
Bernhardt Charlotte Guest Chair



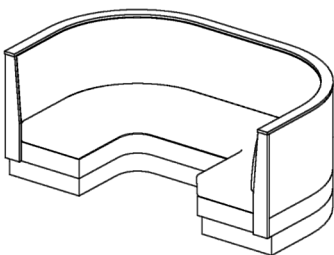
Hightower Kona Round Table



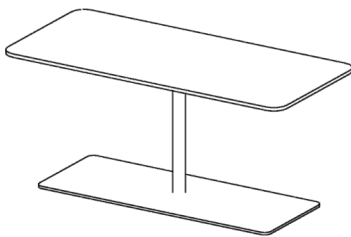
Bernhardt Oslo Lounge Chair



Coalesse Potrero Light Table



Falcon Haveford Half Circle Booth



Medinah Table 1927 - 48



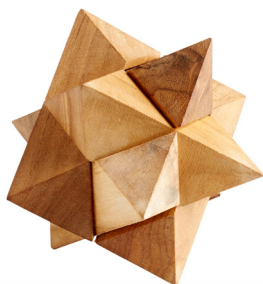
Tech Lighting Lotus Round



Tech Lighting Mura Wall Sconce



Eureka Cliff Wall Sconce



Cyan Gemma Puzzle Sculpture



Cyan Colosal Thumper Dome Sculpture



Cyan Key Three



Cyan Sculpture Spectacles



Cyan Posing Man Shelf Decor

# Application Legend

- + Dark colors to create sophistication & boldness
- + Green brings growth, harmony & freshness to the space
- + Lighting selections to avoid eye strains
- + Over hang over booths for privacy & acoustics
- + Golf pictures to represent country club
- + Materials chosen for acoustics

# Experience Legend

- + Open space
- + Semi formal
- + Warm and inviting
- + Scandinavian furniture
- + Lighting to create ambiance
- + Relaxed environment

# Materials

Carpet- Shaw Knotted Tile Argan 01100  
Texture/Aesthetics + Low Pile

Wood - Rockport Stain  
Color + Durability

Brick - FireClay Hunter Green  
Sustainable + Durability

Laminate - Formica White  
Aesthetics + Low Maintenance

Metal - Chemetal Aluminum  
Durable + Color

Paint - SW Drift of Mist  
Color + Low VOC

Paint - SW Ellie Gray  
Color + Low VOC

Paint - SW Ripe Olive  
Color + Low VOC

Upholstery - Concertex Cubist Bourbon  
Aesthetics + Durable

Upholstery - Concertex SP Deep Forest  
Top Coat + Durable

Upholstery - Carnegie Kid 652071  
Durable + Acoustics

Upholstery - Carnegie Tartan 64882  
Stain Repellent + Durability

Wall Covering - Concertex Aracena Cork Moonstone  
Texture + Durable

Tile - TileBar Nabi Argyle Glacier  
Texture + Aesthetics

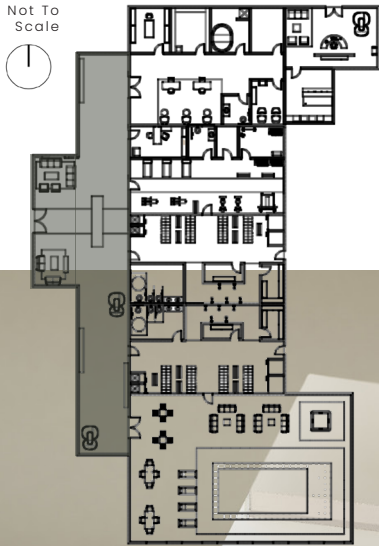


# Mood Board 3

Spa, Fitness and Pool







# Spa Entry

Enlarged Floor Plan



Enlarged Ceiling Plan



Not To Scale



## WELL v2

### MOVEMENT

- | Encouraging activity through strategic space planning
- | Green color psychology of balance and harmony

### LIGHT

- | Maximizing natural light to offset energy costs
- | LED fixture specifications for energy efficiency

### AIR

- | No VOCs allowing for higher indoor air quality
- | Non-toxic cleaning products - regarding health and wellness

## LEED

### ENERGY & ATMOSPHERE

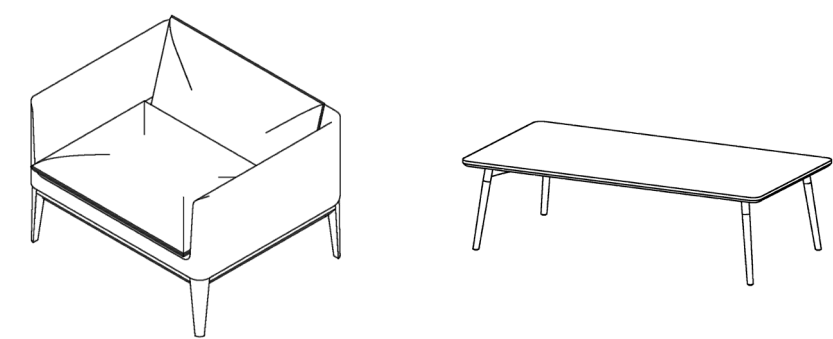
- | Green power
- | Energy performance
- | Enhanced commissioning

### INDOOR ENVIRONMENTAL QUALITY

- | Daylight and views
- | Monitor HVAC
- | Low VOC materials

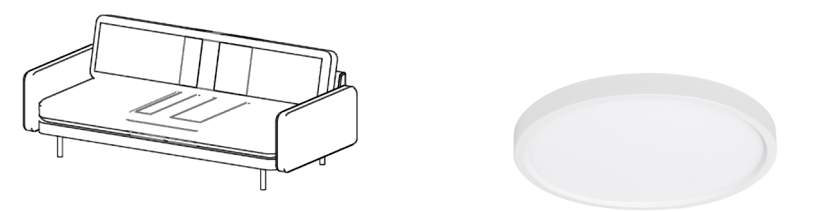


# Furniture + Fixtures



Bernhardt Atlantic Lounge Chair

High Tower Bello Table



Bolia Scandinavian 3 Seat Sofa

Tech Lighting Lotus Round



Eureka Stroke Surface Mount

Eureka Ceiling Suspended Area



Cyan Floppy Sculpture

Cyan Large Ariana Sculpture

# Application Legend

# Experience Legend

- + Neutral colors to suit all generations
  - + Triangles used to represent balance
  - + Green brings growth, harmony & freshness to the space
  - + Lighting selections to avoid eye strains
  - + Low VOC materials
  - + Integrated branding to identify spa
- + Open space
  - + Clear wayfinding
  - + Comfortable furniture
  - + Cool lighting
  - + Lighting to create ambiance
  - + Relaxed environment

# Materials

Paint - SW Dried Thyme  
Color + Low VOC

Paint - SW Gray Clouds  
Color + Low VOC

Paint - SW Drift of Mist  
Color + Low VOC

Tile - TileBar Medio Carrara Marble  
Texture + Durability

Luxury Vinyl Tile - Shaw Thatch 0453V  
Acoustics + Low Maintenance

Brick - FireClay Brick Ozark  
Sustainable + Durability

Rug - Flor Down To Earth Stone  
Aesthetics + Low Pile

Solid Surface - Cambria Highgate  
Low Maintenance + Sustainable

Tile - Tilebar Maddox Deco Mineral Green  
Durable + Slip Resistance

Tile - TileBar Nature Stacked Pebble  
Texture + Durable

Upholstery - Concertex Solitaire Chardonnay  
Texture + Durable

Upholstery - Knoll Velvet Moss  
Durable + Acoustics

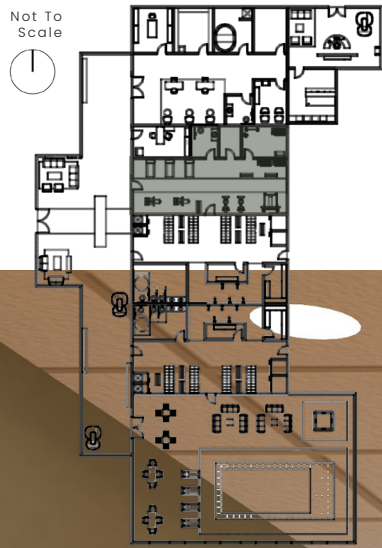
Upholstery - Carnegie Ultra 634084  
Stain Repellent + Durability

Upholstery - Carnegie Ultra 634085  
Acoustics + Durability

Upholstery - Knoll Luxe North Island Wind  
Durable + Top Coat

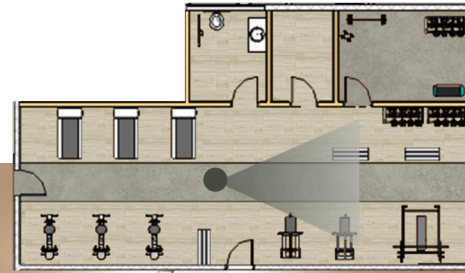
Upholstery - Carnegie Allure 646815  
Texture + Durability



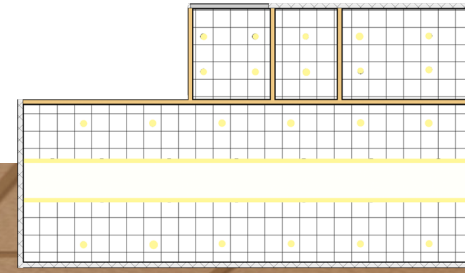


# Fitness

Enlarged Floor Plan



Enlarged Ceiling Plan



## WELL v2

### WATER

- | Accessible drinking water
- | Water filtration system

### LIGHT

- | LED fixture specifications for energy efficiency
- | Controllable lighting for adaptability

### SOUND

- | Sound masking to provide white noise for occupants
- | Isolating HVAC to conceal noise

## LEED

### ENERGY & ATMOSPHERE

- | Green power
- | LED lighting
- | Enhanced HVAC system

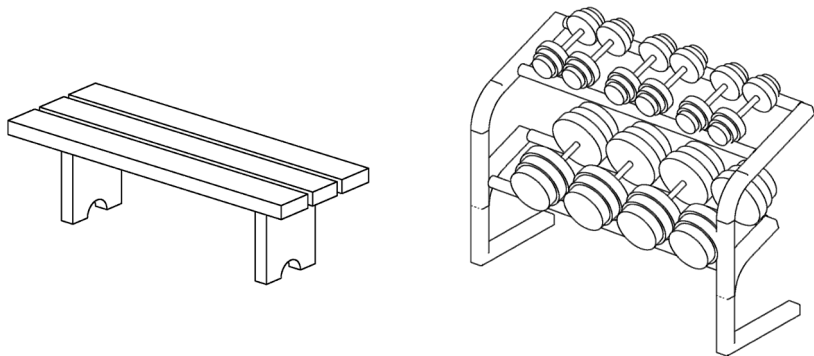
### INDOOR ENVIRONMENTAL QUALITY

- | Air filtration system
- | Thermal comfort
- | Materials reuse



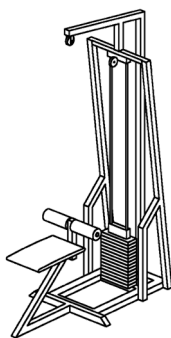


# Furniture + Fixtures

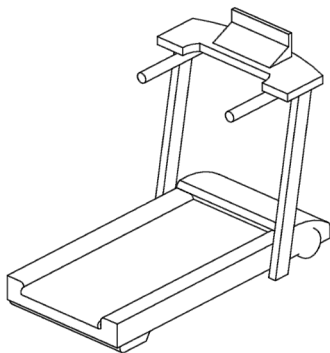


Bolia Bench

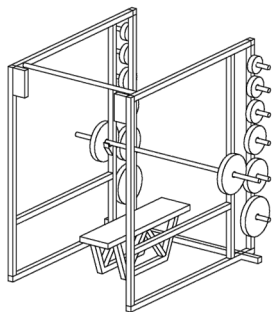
Dumb Bells



Pull Down Machine



Treadmill



Weight Bench Set



Tech Lighting Lotus Round



Eureka Stroke Surface Mount

# Application Legend

- + Neutral colors to suit all generations
- + Green brings growth, harmony & freshness to the space
- + Lighting selections to avoid eye strains
- + Map of Brookings to tie back to concept
- + Economical materials
- + Durable materials
- + Materials chosen for acoustics

# Experience Legend

- + Open space
- + Warm and inviting
- + Comfortable atmosphere
- + Cool lighting
- + Lighting to create ambiance
- + Relaxed environment
- + Welcoming

# Materials

A collage of material samples. It includes a potted plant, a piece of light-colored wood, a piece of dark wood, a piece of light-colored paint, a piece of dark paint, a piece of rubber, and a piece of wood plank. Lines connect these samples to their respective labels and descriptions.

Paint - SW Drift of Mist  
Color + Low VOC

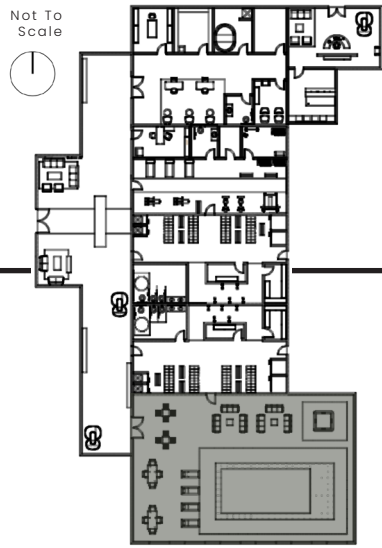
Paint - SW Sage Green Light  
Color + Low VOC

Wall Covering - Nappa Tile  
Wood Plank BP-092  
Aesthetics + Durable

Luxury Vinyl Tile - Tarkett  
Acczent - Long Modern Oak  
Durable + Color

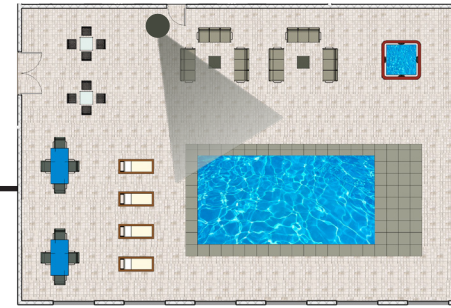
Rubber - ECORE Attain  
Silence White Cement  
Durable + Slip Resistance



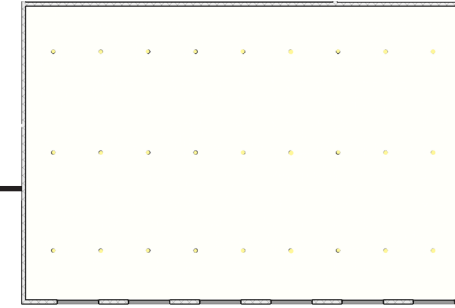


# Pool

Enlarged Floor Plan



Enlarged Ceiling Plan



## WELL v2

### MATERIALS

| Low hazard cleaning products for user health and wellness.

### LIGHT

| Maximizing natural light to offset energy costs.  
 | LED fixture specifications for energy efficiency  
 | Controllable lighting for adaptability.

### AIR

| Non-toxic cleaning products - regarding health and wellness.  
 | Enhanced ventilation to provide fresh air to the occupants.

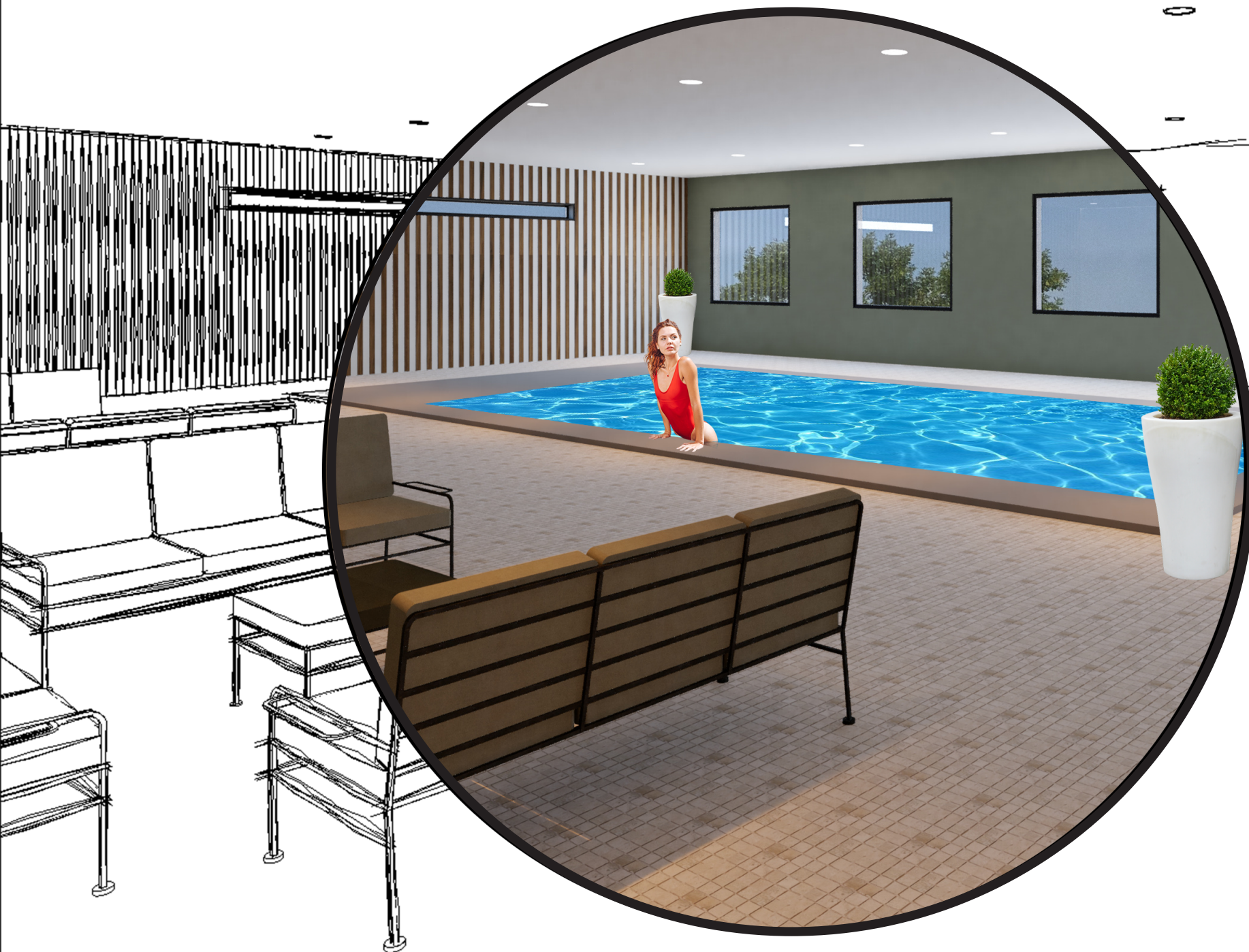
## LEED

### ENERGY & ATMOSPHERE

| Green power  
 | Energy performance  
 | Enhanced commissioning

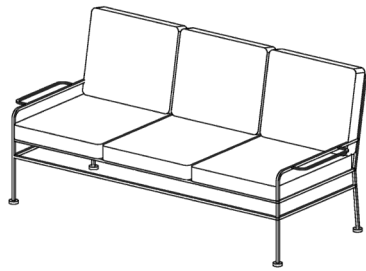
### INDOOR ENVIRONMENTAL QUALITY

| Air filtration system  
 | Thermal comfort  
 | Materials reuse

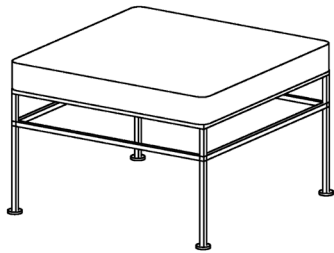




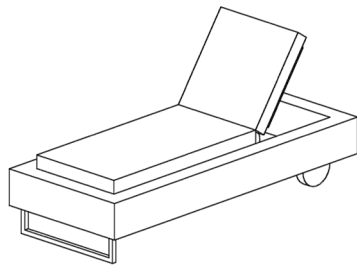
# Furniture + Fixtures



Bernhardt Capri  
Couch



Bernhardt Stillwater  
Cocktail Table



Bernhardt Playa  
Lounge Chair



Tech Lighting Lotus  
Round



Eureka Stroke  
Surface Mount

# Application Legend

- + Neutral colors to suit all generations
- + 2x2 non slip tiles
- + Green brings growth, harmony & freshness to the space
- + Lighting selections to avoid eye strains
- + Low VOC materials
- + Economical and durable materials
- + Windows for views to the outside

# Experience Legend

- + Open space
- + Casual
- + Warm and inviting
- + Outdoor rated furniture
- + Cool lighting
- + Lighting to create ambiance
- + Relaxed and fun environment

# Materials

Tile - TileBar Bond Excalibur  
24x48 Matte  
Sustainable + Durability

Upholstery - Concertex Luxe  
Gravel  
Color + Durability

Upholstery - Carnegie Siltech  
Grain 63004  
Aesthetics + Low Maintenance

3form Glass Matte Olive  
Color + Aesthetics

Paint - SW Drift of Mist  
Color + Low VOC

Paint - SW Sage Green Light  
Color + Low VOC

Tile - TileBar Seville  
Olimpia Porcelain Mosaic  
Durable + Slip Resistance



# Index:

## Sustainable sources + systems utilized

### COVID-19 Materials

- + Silver and copper imbedded solid surface
- + Quartz (non-porous)
- + Stainless Steel
- + Antibacterial paint, fabrics and upholstery
- + Indigo lighting
- + HVAC – indoor air quality and plants
- + Natural daylight
- + Porcelain tile
- + Granite (sealed)
- + Bleach cleanable fabric and carpet

### Unique Sustainable Companies Used:

#### + *Fireclay Tile*

They buy used, repurpose, and take care of what they have, and they use recycled materials whenever possible.

#### + *Florida Seating*

Certified as a woman-owned business by WBENC with a global footprint of 400,000 square feet.

#### + *Flor*

Offering a return & recycle program to turn old FLOR tiles into new products; and, transitioning their entire collection to 100% recycled yarn.

### Design for COVID-19:

- + Touchless hand sanitizer located prior to entry at critical doors and all restrooms and dining spaces.
- + Touchless faucets
- + Touchless hand dryers
- + Foot operated door openers
- + Touchless toilet flushing
- + Automatic doors at entry to reduce spread of germs.
- + HEPA air filters
- + Technology for touchless ordering and service requests.





# Bibliography

## ARTICLES:

Generations X,Y, Z and the Others. (n.d.). Retrieved from <http://socialmarketing.org/archives/generations-xy-z-and-theothers/>.

Kopec, D. A. (2018). Environmental psychology for design. New York: Fairchild Books, An imprint of Bloomsbury Publishing.

Warren, K. (2019, October 14). Traditional country clubs with their no-jeans dress codes and formal dining options are failing to attract millennials - but clubs are making 5 keys changes to pull in a younger clientele. Retrieved from <https://www.businessinsider.com/millennials-dont-like-country-clubs-membership-dues-evolution-2019-10>

## WEBSITES:

Babarinde, Oladapo. "How Design Can Impact Your Business Revenue - Helith Digital." Helith Digital - Web Design Company Nigeria, 22 July 2019, [www.helithdigital.com/how-design-can-impact-your-business-revenue/](http://www.helithdigital.com/how-design-can-impact-your-business-revenue/).

"Commercial&nbsp; Hospitality Furniture, Commercial Restaurant Furniture and Commercial Healthcare Furniture." Florida Seating, 11 June 2019, [floridaseating.com/](http://floridaseating.com/).

Curtin, Brian. "How Country Clubs Work: What You Should Know Before Joining One." St. Georges Golf, 3 Apr. 2018, [www.stgeorgesgolf.com/Blog/April\\_2018/how-country-clubs-work.aspx](http://www.stgeorgesgolf.com/Blog/April_2018/how-country-clubs-work.aspx).

Tapia, Daniel. "Samsun Golf Club / CAA.Studio." ArchDaily, ArchDaily, 6 Apr. 2019, [www.archdaily.com/914311/samsun-golf-club-catudio?ad\\_source=myarchdaily](http://www.archdaily.com/914311/samsun-golf-club-catudio?ad_source=myarchdaily).